

# Lessard-Sams Outdoor Heritage Council

## Fiscal Year 2019 / ML 2018 Request for Funding



**Date:** May 31, 2017

**Program or Project Title:** Martin County DNR WMA Acquisition Phase 2

**Funds Requested:** \$9,108,000

**Manager's Name:** Doug Hartke

**Title:** Grant Coordinator

**Organization:** Fox Lake Conservation League, Inc.

**Address:** PO Box 212

**City:** Sherburn, MN 56171

**Office Number:** 507-764-4060

**Mobile Number:** 507-236-1700

**Fax Number:** 507-764-4065

**Email:** dhartke@frontiernet.net

**County Locations:** Martin

**Regions in which work will take place:**

- Prairie

**Activity types:**

- Protect in Fee

**Priority resources addressed by activity:**

- Wetlands
- Prairie

### Abstract:

This project is a partnership between several organizations to restore diverse prairie and wetland habitat in areas adjacent to existing DNR Wildlife Management Areas. Parcels are identified by working with the representatives of local government, Windom Area DNR, Ducks Unlimited (DU), The Conservation Fund (TCF), and the Fox Lake Conservation League. Wetland restoration and additional grasslands are needed to make our WMA's sustainable. We will use the real estate expertise of TCF, wetland and grassland restoration expertise of DU, and the local efforts of the Fox Lake Conservation League to ensure success of this conservation effort.

### Design and scope of work:

Project sites were targeted by the habitat need and land availability in areas adjacent to existing WMA's, existing habitat and lands already protected from development or other land use change. Work is designed to provide the most habitat value. The landscape will be restored as close as possible to conditions that existed prior to its conversion to agricultural production. Wetlands will be restored without the disruption of the natural drainage system. Native vegetation will be restored with a diverse range of species suitable to the landscape.

### Which sections of the Minnesota Statewide Conservation and Preservation Plan are applicable to this project:

- H5 Restore land, wetlands and wetland-associated watersheds
- H7 Keep water on the landscape

### Which other plans are addressed in this proposal:

- Long Range Duck Recovery Plan
- Minnesota's Wildlife Management Area Acquisition - The Next 50 Years

## Describe how your program will advance the indicators identified in the plans selected:

Measurable reductions in quantity of water leaving targeted waterbodies and the improvement of water quality will advance the indicators the referenced plans. Increasing wildlife numbers, species diversity and recreational opportunities also advance the objectives of both plans.

## Which LSOHC section priorities are addressed in this proposal:

### Prairie:

- Protect, enhance, or restore existing wetland/upland complexes, or convert agricultural lands to new wetland/upland habitat complexes

## Describe how your program will produce and demonstrate a significant and permanent conservation legacy and/or outcomes for fish, game, and wildlife as indicated in the LSOHC priorities:

This project will protect high quality prairie and wetland habitat and restore additional prairie and wetland basins, expanding an area that is already recognized locally as a significant, permanent conservation legacy. The many partners involved in the conservation work in Martin County (MN DNR, USFWS, Pheasants Forever, Ducks Unlimited, Fox Lake Conservation League and The Conservation Fund) have made a substantial commitment to the protection, restoration and enhancement of its wetlands and grasslands. This has created a network of nearly 10,000 acres of protected lands in Martin County can be made sustainable for the production of wildlife species and the enjoyment of Minnesotans. This project will help to ensure that the investments made thus far will succeed.

## Describe how the proposal uses science-based targeting that leverages or expands corridors and complexes, reduces fragmentation or protects areas identified in the MN County Biological Survey:

Our Martin County Conservation Planning Group includes wildlife group representatives, local government, and state agencies. There is a wide range of knowledge and interest within the group. Historic Information, the MN County Biological Survey and local knowledge help identify areas where habitat restoration will likely be most beneficial for multiple reasons. Expanding habitat adjacent to existing high quality native habitat and habitat already protected by public ownership or perpetual conservation easements are often targeted. Sites with threatened, endangered and species in decline are good targets to build upon, especially when expansions can link sites to help expand corridors, especially along water courses and lake chains.

## How does the proposal address habitats that have significant value for wildlife species of greatest conservation need, and/or threatened or endangered species, and list targeted species:

This project will protect threatened habitats in Martin County. Native prairie and high quality wetland will be protected and expanded upon. Restoration sites will provide the opportunity to expand populations of at-risk and threatened plant species that the Martin SWCD has been propagating for introduction to permanently protected sites. Threatened species include, Eared gerardia (*Agalinis auriculata*); Sullivant's milkweed (*Asclepias sullivantii*); and Tuberous Indian plantain (*Cacalia tuberosa*). Other locally rare or Special Concern species include: Small white lady's slipper (*Cypripedium candidum*) and Rattlesnake master (*Eryngium yuccifolium*). Plans to include local ecotype native plant materials in the establishment of a highly diverse prairie landscape will provide habitat to support native pollinators, including several species of milkweed to support the Monarch butterfly.

## Identify indicator species and associated quantities this habitat will typically support:

With the restoration of highly diverse prairie habitat on these parcels, we expect to produce 200+ harvestable rooster pheasants per year. By incorporating at least 5 species of native milkweeds we expect to produce 2,000 to 6,000 Monarchs per year. Approximately 400 pairs of Grasshopper sparrows and 300 pairs of Bobolinks could potentially be found on this protected and restored prairie. With Trumpeter Swans beginning to pair up in the project area, we would expect to find up to 4 pair of swans on restored wetlands. Approximately 280 new pairs of Mallard ducks should find a home on the restored highly diverse wetland/prairie complex.

## Outcomes:

### Programs in prairie region:

- Protected, restored, and enhanced habitat for migratory and unique Minnesota species *Prairie tracts acquired will be restored back to wetlands and prairie with native grass and forb wildflowers for pollinators, and will transferred into the state Wildlife Management Area system to provide additional prairie habitat for migratory species and public use, both of which will be monitored by Minnesota DNR field staff. Water and habitat quality in restored wetlands will be monitored by DNR area wildlife field staff, and managed to optimize wetland habitat conditions. Prairie uplands will be managed to minimize trees and encourage native grasses and pollinator wild flowers.*

## How will you sustain and/or maintain this work after the Outdoor Heritage Funds are expended:

Maintaining and improving upon this work will be the responsibility of the MN DNR with support from project partners when appropriate. Local partners will continue to install additional local source native plant species to enhance habitat to support more species, including pollinators. Local partner monitoring will assist with identifying invasive species threats and provide assistance with eradication or control if necessary.

**Explain the things you will do in the future to maintain project outcomes:**

Year	Source of Funds	Step 1	Step 2	Step 3
2021 and ongoing	Volunteer, local	Monitor to add species	Monitor for invasive species	Treat and plant as needed

**What is the degree of timing/opportunistic urgency and why it is necessary to spend public money for this work as soon as possible:**

Families holding these high priority marginal lands are at a time where they need to sell. If we don't act when they are available, these areas of high quality habitat and restorable marginal land will be sold and possibly never be available for addition to some of the best habitat in southern Minnesota.

**How does this proposal include leverage in funds or other effort to supplement any OHF appropriation:**

We are currently planning no leverage but by applying to the LSOHC it will expand existing local efforts to add more diversity to the landscape by utilizing local source plant materials and species not commonly included in restoration projects. We are expanding our native seed program so we have local source seed for these habitat projects. The Fox Lake Conservation League has been working with the MN DNR and USFWS doing land acquisition in Martin County since the early 1990's. We continue to be very active always looking for the next addition to a WMA or WPA. Our local board members seek out potential round outs and habitat additions when land becomes available.

**Relationship to other funds:**

- Environmental and Natural Resource Trust Fund
- Clean Water Fund

**Describe the relationship of the funds:**

Besides providing protection and restoration of high quality habitat, this project helps restore the watershed resulting in cleaner and better water quantity management of water. It also addresses the priorities of the Environmental and Natural Resource Trust Fund (ENRTF). The ENRTF provided funding for plant materials that can be utilized on this project. The Fox Lake Conservation League is just finishing up with a LCCMR project of \$440,000 for a SNA for the Martin County Park system. Our Club has been working with multiple partners and the MN DNR since the mid 1990's to improve the habitat of Martin County!

**Describe the source and amount of non-OHF money spent for this work in the past:**

Not Listed

**Activity Details**

**Requirements:**

If funded, this proposal will meet all applicable criteria set forth in MS 97A.056 - **Yes**

Will local government approval be sought prior to acquisition - **No**

The Fox Lake Conservation League and other local wildlife organizations in coordination with the Minnesota DNR and other partners, will informally keep local units of government informed on the progress of all land acquisition projects.

Is the land you plan to acquire free of any other permanent protection - **Yes**

Do you anticipate federal funds as a match for this program - **No**

**Land Use:**

Will there be planting of corn or any crop on OHF land purchased or restored in this program - **Yes**

Explain

A food plot is planned by the DNR on two of the parcels in this proposal. These food plots are viewed by DNR as important wildlife management elements in this part of the state.

Some limited duration crop planting may be required as site preparation for prairie restoration on parcels where herbicides with long (18+ month) residual carryover have been used. Conversion of old fields infested with invasive plants such as smooth brome and reed canary grass require a year of cropping with herbicides. Plantings may be needed for temporary cover or for other restoration purposes.

Are any of the crop types planted GMO treated - **Yes**

Is this land currently open for hunting and fishing - **No**

Will the land be open for hunting and fishing after completion - **Yes**

No variation anticipated.

Are there currently trails or roads on any of the acquisitions on the parcel list - **No**

Will new trails or roads be developed or improved as a result of the OHF acquisition - **No**

## Accomplishment Timeline

Activity	Approximate Date Completed
Order Appraisals and Negotiate Purchase Prices on Parcels	December 1, 2018
Close on Properties	December 31, 2018
Transfer Properties to MN DNR	March 31, 2019
Work on Restoration Plans	April 1, 2019
Complete Wetland and Grassland Restoration Plans	November 1, 2019
Install Local Eco type Native Plant Materials that have been collected locally	November 1, 2019
Follow up and Weed Control	2020

# Budget Spreadsheet

**Total Amount of Request: \$9,108,000**

## Budget and Cash Leverage

Budget Name	LSOHC Request	Anticipated Leverage	Leverage Source	Total
Personnel	\$258,900	\$0		\$258,900
Contracts	\$740,000	\$0		\$740,000
Fee Acquisition w/ PILT	\$7,255,000	\$0		\$7,255,000
Fee Acquisition w/o PILT	\$0	\$0		\$0
Easement Acquisition	\$0	\$0		\$0
Easement Stewardship	\$0	\$0		\$0
Travel	\$21,500	\$0		\$21,500
Professional Services	\$140,000	\$0		\$140,000
Direct Support Services	\$17,600	\$0		\$17,600
DNR Land Acquisition Costs	\$49,000	\$0		\$49,000
Capital Equipment	\$0	\$0		\$0
Other Equipment/Tools	\$6,000	\$0		\$6,000
Supplies/Materials	\$450,000	\$0		\$450,000
DNR IDP	\$170,000	\$0		\$170,000
Total	\$9,108,000	\$0		\$9,108,000

## Personnel

Position	FTE	Over # of years	LSOHC Request	Anticipated Leverage	Leverage Source	Total
Grant Administration	0.25	4.00	\$75,000	\$0		\$75,000
DU Restoration Biologists and Engineers	0.33	3.00	\$95,900	\$0		\$95,900
MN State Director	0.10	2.00	\$38,000	\$0		\$38,000
MN Acquisition Associate	0.20	2.00	\$50,000	\$0		\$50,000
Total	0.88	11.00	\$258,900	\$0		\$258,900

## Budget and Cash Leverage by Partnership

Budget Name	Partnership	LSOHC Request	Anticipated Leverage	Leverage Source	Total
Personnel	FLCL	\$75,000	\$0		\$75,000
Contracts	FLCL	\$0	\$0		\$0
Fee Acquisition w/ PILT	FLCL	\$7,255,000	\$0		\$7,255,000
Fee Acquisition w/o PILT	FLCL	\$0	\$0		\$0
Easement Acquisition	FLCL	\$0	\$0		\$0
Easement Stewardship	FLCL	\$0	\$0		\$0
Travel	FLCL	\$3,500	\$0		\$3,500
Professional Services	FLCL	\$0	\$0		\$0
Direct Support Services	FLCL	\$0	\$0		\$0
DNR Land Acquisition Costs	FLCL	\$49,000	\$0		\$49,000
Capital Equipment	FLCL	\$0	\$0		\$0
Other Equipment/Tools	FLCL	\$0	\$0		\$0
Supplies/Materials	FLCL	\$0	\$0		\$0
DNR IDP	FLCL	\$0	\$0		\$0
Total		\$7,382,500	\$0		\$7,382,500

## Personnel - FLCL

Position	FTE	Over # of years	LSOHC Request	Anticipated Leverage	Leverage Source	Total
Grant Administration	0.25	4.00	\$75,000	\$0		\$75,000
Total	0.25	4.00	\$75,000	\$0		\$75,000

Budget Name	Partnership	LSOHC Request	Anticipated Leverage	Leverage Source	Total
Personnel	DU	\$95,900	\$0		\$95,900
Contracts	DU	\$740,000	\$0		\$740,000
Fee Acquisition w/ PILT	DU	\$0	\$0		\$0

Fee Acquisition w/o PILT	DU	\$0	\$0	\$0
Easement Acquisition	DU	\$0	\$0	\$0
Easement Stewardship	DU	\$0	\$0	\$0
Travel	DU	\$15,000	\$0	\$15,000
Professional Services	DU	\$0	\$0	\$0
Direct Support Services	DU	\$9,600	\$0	\$9,600
DNR Land Acquisition Costs	DU	\$0	\$0	\$0
Capital Equipment	DU	\$0	\$0	\$0
Other Equipment/Tools	DU	\$6,000	\$0	\$6,000
Supplies/Materials	DU	\$450,000	\$0	\$450,000
DNR IDP	DU	\$170,000	\$0	\$170,000
Total	-	\$1,486,500	\$0	\$1,486,500

**Personnel - DU**

Position	FTE	Over # of years	LSOHC Request	Anticipated Leverage	Leverage Source	Total
DU Restoration Biologists and Engineers	0.33	3.00	\$95,900	\$0		\$95,900
Total	0.33	3.00	\$95,900	\$0	-	\$95,900

Budget Name	Partnership	LSOHC Request	Anticipated Leverage	Leverage Source	Total
Personnel	TCF	\$88,000	\$0		\$88,000
Contracts	TCF	\$0	\$0		\$0
Fee Acquisition w/ PILT	TCF	\$0	\$0		\$0
Fee Acquisition w/o PILT	TCF	\$0	\$0		\$0
Easement Acquisition	TCF	\$0	\$0		\$0
Easement Stewardship	TCF	\$0	\$0		\$0
Travel	TCF	\$3,000	\$0		\$3,000
Professional Services	TCF	\$140,000	\$0		\$140,000
Direct Support Services	TCF	\$8,000	\$0		\$8,000
DNR Land Acquisition Costs	TCF	\$0	\$0		\$0
Capital Equipment	TCF	\$0	\$0		\$0
Other Equipment/Tools	TCF	\$0	\$0		\$0
Supplies/Materials	TCF	\$0	\$0		\$0
DNR IDP	TCF	\$0	\$0		\$0
Total	-	\$239,000	\$0	-	\$239,000

**Personnel - TCF**

Position	FTE	Over # of years	LSOHC Request	Anticipated Leverage	Leverage Source	Total
MN State Director	0.10	2.00	\$38,000	\$0		\$38,000
MN Acquisition Associate	0.20	2.00	\$50,000	\$0		\$50,000
Total	0.30	4.00	\$88,000	\$0	-	\$88,000

Amount of Request: \$9,108,000  
Amount of Leverage: \$0  
Leverage as a percent of the Request: 0.00%  
DSS + Personnel: \$276,500  
As a % of the total request: 3.04%  
Easement Stewardship: \$0  
As a % of the Easement Acquisition: -%

**How did you determine which portions of the Direct Support Services of your shared support services is direct to this program:**

TCF -Our real estate support staff keeps hourly time sheets to track direct time spent on projects by grant source. We have used those past metrics to estimate the costs for this grant.  
DU - Minnesota DNR grants staff previously reviewed and approved DU accounting methodology for Direct Support Services, which are

calculated and included in DU staff costs. DU Direct Support Services constitute approximately 10% of DU overall staff costs on average among DU conservation staff billing categories. DU breaks out and invoices for Direct Support Service expenses approved by DNR for reimbursement separately from Personnel expenses. In accordance with 2 CFR 200, DU uses the direct allocation method of allocating costs to programs and final cost objectives. This process of allocating costs is accomplished through the use of hourly rates. The direct cost of activities, including direct support expenses, is included in these hourly rates. The rates are comprised of costs for salaries, benefits, office space, general insurance, support staff, office supplies, and other various direct expenses incurred at the regional offices and conservation department at the home office. All costs are assigned to conservation projects (net of applicable personnel and other costs that are non-conservation related.) Hourly charges represent the amount that DU charges conservation projects per hour for each staff member working on the project. These costs represent expenses that directly support the labor cost necessary for the development of a specific water/wetlands conservation project.

**Does the amount in the contract line include R/E work?**

Yes, \$1,486,500 is budgeted for restoration work.

**Does the amount in the travel line include equipment/vehicle rental? - Yes**

**Explain the amount in the travel line outside of traditional travel costs of mileage, food, and lodging:**

None.

**Describe and explain leverage source and confirmation of funds:**

Not Listed

**Does this proposal have the ability to be scalable? - Yes**

**Tell us how this project would be scaled and how administrative costs are affected, describe the "economy of scale" and how outputs would change with reduced funding, if applicable:**

There are 7 parcels in our proposal and all costs are scalable to the amount of funding on a per parcel basis.

## Output Tables

**Table 1a. Acres by Resource Type**

Type	Wetlands	Prairies	Forest	Habitats	Total
Restore	0	0	0	0	0
Protect in Fee with State PILT Liability	140	863	0	0	1,003
Protect in Fee W/O State PILT Liability	0	0	0	0	0
Protect in Easement	0	0	0	0	0
Enhance	0	0	0	0	0
Total	140	863	0	0	1,003

**Table 1b. How many of these Prairie acres are Native Prairie?**

Type	Native Prairie
Restore	0
Protect in Fee with State PILT Liability	15
Protect in Fee W/O State PILT Liability	0
Protect in Easement	0
Enhance	0
Total	15

**Table 2. Total Requested Funding by Resource Type**

Type	Wetlands	Prairies	Forest	Habitats	Total
Restore	\$0	\$0	\$0	\$0	\$0
Protect in Fee with State PILT Liability	\$1,271,300	\$7,836,700	\$0	\$0	\$9,108,000
Protect in Fee W/O State PILT Liability	\$0	\$0	\$0	\$0	\$0
Protect in Easement	\$0	\$0	\$0	\$0	\$0
Enhance	\$0	\$0	\$0	\$0	\$0
Total	\$1,271,300	\$7,836,700	\$0	\$0	\$9,108,000

**Table 3. Acres within each Ecological Section**

Type	Metro/Urban	Forest/Prairie	SE Forest	Prairie	Northern Forest	Total
Restore	0	0	0	0	0	0
Protect in Fee with State PILT Liability	0	0	0	1,003	0	1,003
Protect in Fee W/O State PILT Liability	0	0	0	0	0	0
Protect in Easement	0	0	0	0	0	0
Enhance	0	0	0	0	0	0
Total	0	0	0	1,003	0	1,003

**Table 4. Total Requested Funding within each Ecological Section**

Type	Metro/Urban	Forest/Prairie	SE Forest	Prairie	Northern Forest	Total
Restore	\$0	\$0	\$0	\$0	\$0	\$0
Protect in Fee with State PILT Liability	\$0	\$0	\$0	\$9,108,000	\$0	\$9,108,000
Protect in Fee W/O State PILT Liability	\$0	\$0	\$0	\$0	\$0	\$0
Protect in Easement	\$0	\$0	\$0	\$0	\$0	\$0
Enhance	\$0	\$0	\$0	\$0	\$0	\$0
Total	\$0	\$0	\$0	\$9,108,000	\$0	\$9,108,000



**Table 5. Average Cost per Acre by Resource Type**

Type	Wetlands	Prairies	Forest	Habitats
Restore	\$0	\$0	\$0	\$0
Protect in Fee with State PILT Liability	\$9,081	\$9,081	\$0	\$0
Protect in Fee W/O State PILT Liability	\$0	\$0	\$0	\$0
Protect in Easement	\$0	\$0	\$0	\$0
Enhance	\$0	\$0	\$0	\$0

**Table 6. Average Cost per Acre by Ecological Section**

Type	Metro/Urban	Forest/Prairie	SE Forest	Prairie	Northern Forest
Restore	\$0	\$0	\$0	\$0	\$0
Protect in Fee with State PILT Liability	\$0	\$0	\$0	\$9,081	\$0
Protect in Fee W/O State PILT Liability	\$0	\$0	\$0	\$0	\$0
Protect in Easement	\$0	\$0	\$0	\$0	\$0
Enhance	\$0	\$0	\$0	\$0	\$0

**Target Lake/Stream/River Feet or Miles**

0

I have read and understand Section 15 of the Constitution of the State of Minnesota, Minnesota Statute 97A.056, and the Call for Funding Request. I certify I am authorized to submit this proposal and to the best of my knowledge the information provided is true and accurate.

# Parcel List

## Explain the process used to select, rank and prioritize the parcels:

The DNR, FLCL, DU, TCF and other partners and biologists have worked together to identify these priority parcels within a conservation complex. The multiple conservation benefits for the species listed above were factored into the total costs for the projects. These represent the greatest conservation return for the investment.

## Section 1 - Restore / Enhance Parcel List

No parcels with an activity type restore or enhance.

## Section 2 - Protect Parcel List

### Martin

Name	TRDS	Acres	Est Cost	Existing Protection?	Hunting?	Fishing?
Crissinger Corp Tract 15	10333225	47	\$0	No	Full	Not Applicable
George Sickler Tract 23	10333222	141	\$0	No	Full	Not Applicable
Kittleson Parcel Tract 11	10333236	314	\$0	No	Full	Not Applicable
Koppen Tract 22	10333222	80	\$0	No	Full	Not Applicable
Ralph Crissinger Tract 14	10333224	77	\$0	No	Full	Not Applicable
Sickler Tract 13A	10333225	135	\$0	No	Full	Not Applicable
Sickler Tract 13B	10333224	209	\$0	No	Full	Not Applicable

## Section 2a - Protect Parcel with Bldgs

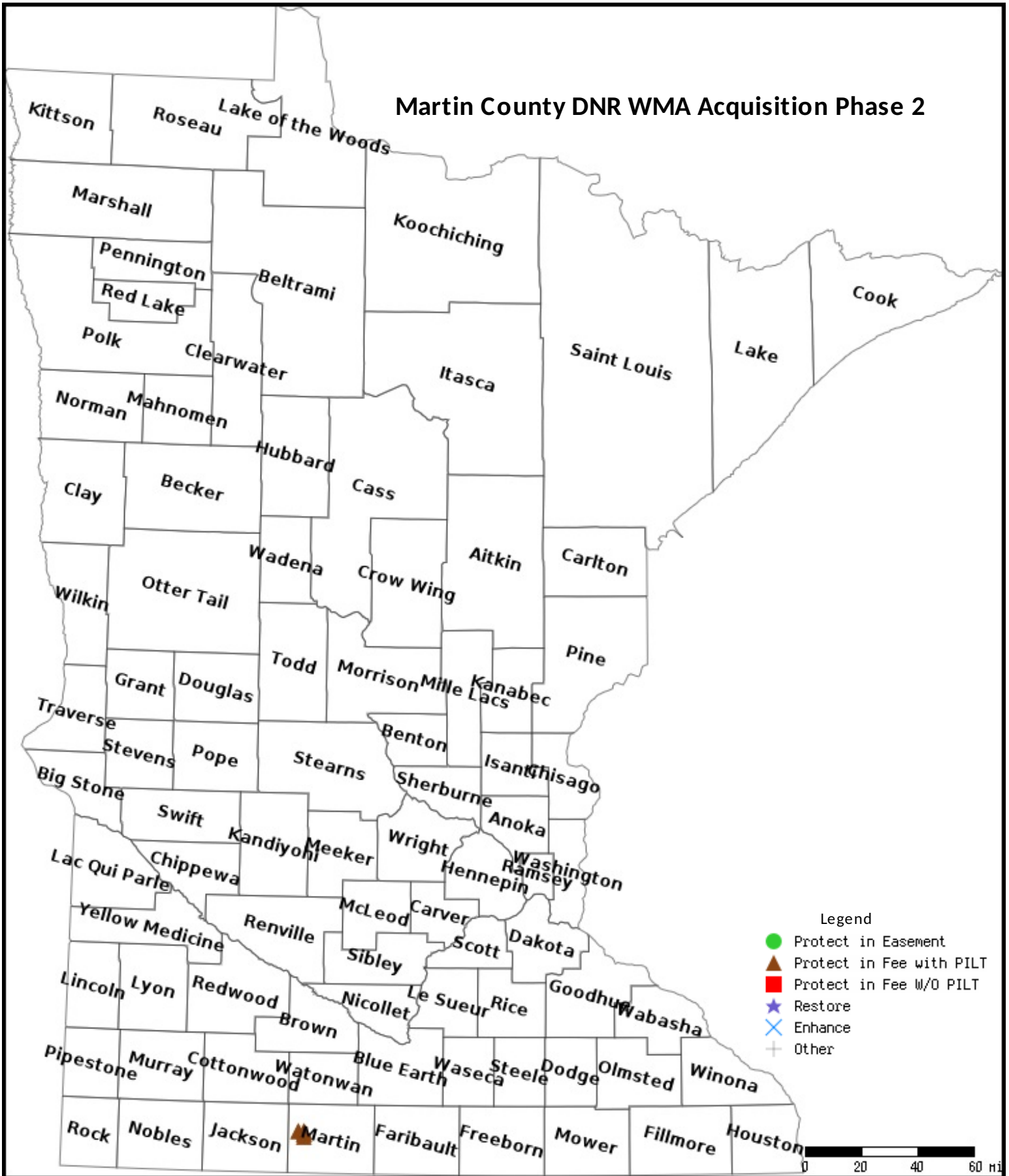
No parcels with an activity type protect and has buildings.

## Section 3 - Other Parcel Activity

No parcels with an other activity type.

# Parcel Map

## Martin County DNR WMA Acquisition Phase 2

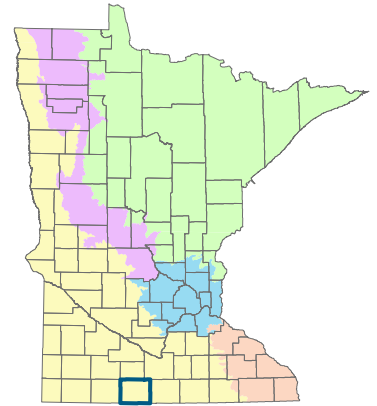


Data Generated From Parcel List

# Martin County Wildlife Areas Phase II



*Aerial view of conservation complex, taken May 2017.*



**Program Area**

This program is a partnership among several organizations to protect and restore diverse prairie and wetland habitat in areas adjacent to existing DNR Wildlife Management Areas in Martin County.

Parcels are identified by working with the representatives of local government, Windom Area DNR, wildlife and non-game ecologists, Ducks Unlimited (DU), The Conservation Fund (TCF), and the Fox Lake Conservation League.

Wetland restoration and additional grasslands are needed to make our WMA's sustainable. We will use the real estate expertise of TCF, wetland and grassland restoration expertise of DU, and the local efforts of the Fox Lake Conservation League to ensure success of this conservation effort.

Parcels were selected in identified conservation complexes, which were chosen by conservation partners and local community members for their existing and potential conservation value for both game and non-game species. Building on previous investments by local conservation clubs and state funding, the partners will protect and restore habitat in the places that matter most for wildlife in Martin County.

## Partners

Fox Lake Conservation League  
Ducks Unlimited  
The Conservation Fund

## OHF Funding Requested

\$9.1 million

## Program Type

Fee Title Acquisition, with PILT Restoration

## Program Outcomes

- Increased connectivity of existing WMAs and conservation easements
- Restoration of 100+ wetland acres
- Builds on previous habitat investments

## Phase I Outcomes

- Protected high-priority parcel on the north side of conservation complex identified in this proposal
- Acquired and restored within 2 years of OHF appropriation
- Restored sensitive lands to upland and wetland habitat in collaboration with MN DNR wildlife and non-game ecologists

# Martin County MN

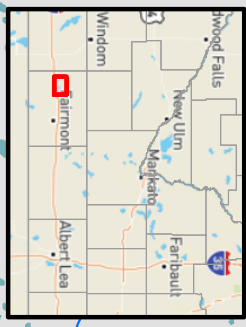
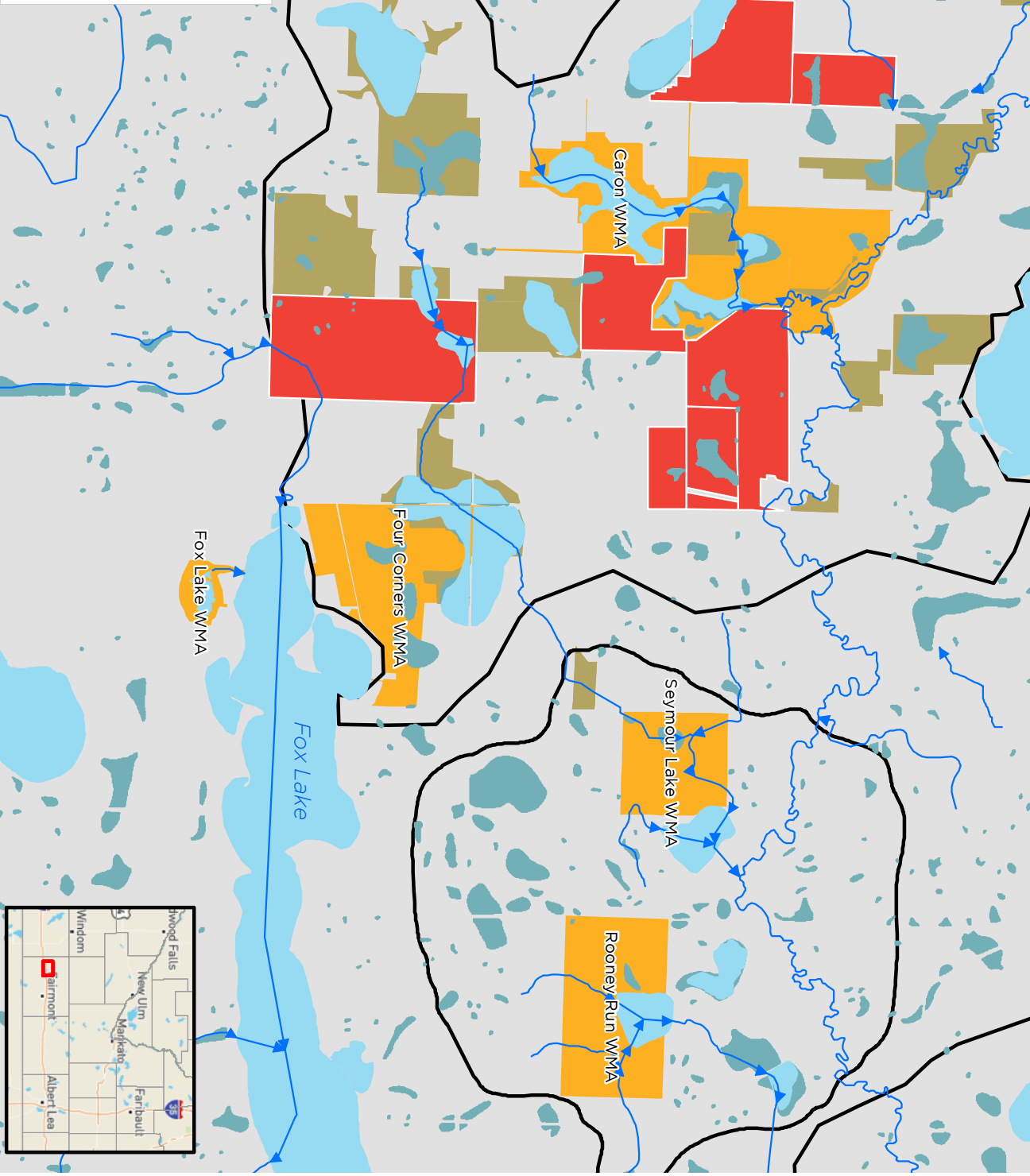
Stream Flow Direction

- Lakes
- Restorable Wetlands
- Priority Parcels
- Conservation Complex
- Wildlife Management Area

Date: 5/31/2017

Created by Emilee Nelson

Data collected from ESRI, MN Geo WMS service





## MINNESOTA SOIL and WATER CONSERVATION DISTRICTS

May 26, 2017

To: Fox Lake Conservation League

RE: Martin County DNR WMA Acquisition Phase 2

The Martin Soil and Water Conservation District supports your efforts protect native prairie, wildlife habitat and restore wetlands. We need more projects that provide multiple uses within our watersheds.

The Martin County Water Plan indicates the need for providing more habitat and outdoor recreational opportunities for the public. Your project will also benefit water quality and make improvements to water quantity management within the watershed. This project will add to nesting habitat as well as adding breeding habitat for waterfowl. Besides waterfowl, small game, and deer, many non-game wildlife species, including pollinators will benefit from this project.

Martin SWCD and volunteers will assist the many partners to provide support with the incorporation of additional local source native prairie plant species to project areas. Planting forbs that provide continuous bloom throughout the growing season will benefit all pollinators.

We look forward to assisting you with your project to not only restore habitat and protect native prairie and wetland habitat, but to protect the watershed by providing water quality improvement and water quantity management.

Sincerely,

Rich Perrine  
Technician, Water Plan/WCA





MARTIN COUNTY CONSERVATION CLUB INC  
1234 South State St  
Fairmont MN 56031

May 9, 2017

To: Fox Lake Conservation League

RE: Martin County DNR WMA Acquisition Phase 2

The Martin County Conservation Club is happy to support your project for the protection of additional wildlife habitat and the restoration of wetland habitat. We need more projects like this one that sets land aside to provide multiple benefits,.

The work proposed on these parcels will add to the existing nesting habitat along with breeding habitat for waterfowl with the restoration of a significant amount of wetland and open water habitat. This land is important in the management of waterfowl, species of small game, and many non-game wildlife species, including pollinators. It will allow the addition of native food plants in a critical area for the deer, pheasants and the many other species that use the existing wildlife habitat.

The Martin County Conservation Club will assist the many partners to provide support as needed in the restoration of these additional acres of much needed wildlife habitat. This area will add to the quality of hunting and other recreational activities that it will support for the future.

We look forward to working with you on this important project to protect and restore habitat, improve water quality while managing flows to reduce the impacts of downstream flooding.

Sincerely,

Bruce Moore, President  
Martin County Conservation Club, Inc.