

Lessard-Sams Outdoor Heritage Council

Fiscal Year 2022 / ML 2021 Request for Funding

Date: May 28, 2020

Program or Project Title: Cannon River Watershed Habitat Protection and Restoration Program - Phase 10 (PA05)

Funds Requested: \$5,137,900

Manager's Name: Kristi Pursell

Organization: Cannon River Watershed Partnership

Address: 710 Division Street

City: Northfield, MN 55057

Office Number: 507-786-3913

Email: kristi@crwp.net

County Locations: Goodhue, Le Sueur, Rice, Steele, and Waseca.

Eco regions in which work will take place:

- Southeast Forest
- Prairie

Activity types:

- Restore
- Enhance
- Protect in Fee

Priority resources addressed by activity:

- Wetlands
- Forest
- Prairie
- Habitat

Abstract:

The Cannon River Watershed Habitat Protection and Restoration Program will protect approximately 640 acres in fee, and restore and enhance approximately 351 acres of high priority wildlife habitat within the Cannon River Watershed, including wetlands, prairies, Big Woods forest, and river/shallow lake shoreline. Its goal is to protect existing high quality habitat, restore degraded habitat, prevent degradation of water quality, and provide public access.

Design and scope of work:

The Cannon River Watershed Habitat Protection and Restoration Program - Phase 10 will prevent degradation and quality habitat loss in the Cannon River Watershed. It will increase the amount of restored habitat on public lands available for hunting and angling opportunities within an easy drive for over half of Minnesota's population.

Located south of the Twin Cities, the 1,460 square mile Cannon River Watershed includes over 800 linear miles of streams and rivers that drain a diverse landscape. This area has seen increased development pressure due to the transportation ease of the I-35 corridor and the attraction of the Cannon Lakes, and much of this area has already suffered fragmentation and habitat loss. Historically comprised of Big Woods habitat, the landscape is now dominated by agricultural fields and, to a lesser extent, urban development. Agricultural practices and shoreline development are the major contributors to the impaired status of stretches of the Cannon River and its associated lakes and streams.

Part of a multi-year, multi-partner strategy, this program will include coordination, acquisition, protection and restoration of core parcels of land that contribute to large complexes of forests, restored prairies, wetlands, lakeshore, and river shoreline. Now in its 30th



year, the Cannon River Watershed Partnership (CRWP) is the local expert of the watershed and will coordinate this program, providing program administration and landowner outreach. Acquisitions by The Trust for Public Land (TPL) will be targeted toward large wetland/upland complexes, rare biomes (Big Woods forest, tamarack swamp), shallow lakes, river shoreline, and lands adjacent to existing public land. TPL will convey lands to the DNR except when County ownership is appropriate. Ongoing partnerships will be critical to identify priority conservation opportunities and protection strategies for the existing high biodiversity areas.

Parcels targeted for restoration and enhancement will be evaluated by Great River Greening (GRG) in collaboration with MN DNR, County and SWCD personnel to determine existing and desired conditions for each site. Information gathered will be used to develop site specific work plans for restoring ecologically desired habitats. Project management plans will detail the methods, practices and a time line for successful completion of each site/project. Practices could include; invasive species removal, controlled burning, chemical treatment, individual plant removal, reseeding and/or plug planting, tree stand thinning, and shoreline revetments using native materials. Restorations and enhancements will be aimed at improving habitat and protecting water quality for the benefit of all wildlife and human communities.

Properties targeted for acquisition and restoration can be found in the parcel list below.

In recent years, collaboration among CRWP, TPL and GRG has accelerated awareness of and created growing interest in land protection and habitat restoration opportunities available to landowners. Using this approach and building upon momentum, we seek to increase capacity to deliver permanent land protection and habitat improvement opportunities to landowners to protect well-connected functional forests, prairies, wetlands, lakeshores, and river shorelines that sustain and enhance native species.

How does the proposal address habitats that have significant value for wildlife species of greatest conservation need, and/or threatened or endangered species, and list targeted species:

The areas targeted by The Trust for Public Land have been identified and prioritized through state, regional and local natural resource plans due to their high biodiversity qualities and connectivity to existing public lands. Their protection will occur through fee title acquisition, and will target Big Woods, oak savannas, wetlands and sensitive shoreline communities within the Cannon River Watershed. Great River Greening will conduct significant habitat restoration and enhancement work on already permanently protected conservation lands identified by DNR and County staff within the watershed. The aim is to improve habitat values for wildlife and Species in Greatest Conservation Need (SGCN), including birds using the Mississippi River migratory corridor, and pollinators. Work will restore and enhance riverine, forest, wetlands, oak savanna, and prairie habitat at 11 conservation sites.

Protection, restoration and/or enhancement of these significant parcels will provide critical habitat for game species, including upland birds (dove, turkey, pheasant, and woodcock), white tail deer, migratory waterfowl (mallards, canvasback, wood ducks, hooded mergansers, pintails, and lesser scaup), and aquatic species critical for the protection of fish (trout, northern pike, black crappies, bluegills, and walleye). Protection will also provide access for a diversity of recreational experiences including duck, pheasant, turkey and deer hunting as well as river, stream, and lake fishing. The nongame wildlife, including species in Greatest Conservation Need, that also benefit from this effort includes Bald Eagle, Bell's Vireo, Cerulean Warbler, Loggerhead Shrike, Sandhill Crane, Red-headed Woodpecker, Greater Yellowlegs, Buffbreasted Sandpiper, Blanding's Turtle, Mudpuppies, and the Giant Floater, a species of freshwater mussel.

What is the degree of timing/opportunistic urgency and why it is necessary to spend public money for this work as soon as possible:

Today, only 18% of the landscape remains as forest, wetland or prairie habitat and many of these areas have been degraded. High quality habitat in the Cannon River Watershed continues to be degraded by invasive species or converted to rural residential development and to agricultural production. This area has also been losing Conservation Reserve Program (CRP) lands at a very high rate over the past few years. Protection, restoration, and enhancement of high quality habitat is important for maintaining what remains of the region's unimpaired waters and increasingly vital habitat needs. Proper stewardship of these habitats is critical before they become further degraded due to development and agricultural pressures.

Describe how the proposal uses science-based targeting that leverages or expands corridors and complexes, reduces fragmentation or protects areas identified in the MN County Biological Survey:

This program uses the Minnesota County Biological Survey, and several other GIS data analysis tools to identify priority lands for protection and restoration to create and expand conservation corridors and habitat complexes. In addition, we will consult several watershed-wide landscape planning efforts such as the Cannon River Watershed Landscape Stewardship Plan, the Cannon River Watershed - Watershed Restoration and Protection Strategies (WRAPS), and the the recently developed Cannon River Comprehensive Watershed Management Plan to further identify critical lands in need of protection and restoration.

Which sections of the Minnesota Statewide Conservation and Preservation Plan are applicable to this

project:

- H1 Protect priority land habitats
- H5 Restore land, wetlands and wetland-associated watersheds

Which other plans are addressed in this proposal:

- Minnesota's Wildlife Management Area Acquisition - The Next 50 Years
- Outdoor Heritage Fund: A 25 Year Framework

Describe how your program will advance the indicators identified in the plans selected:

This program's efforts to protect, restore and/or enhance wetland/upland complexes, prairie and shoreline habitat further the goals of both "Minnesota's Wildlife Management Area Acquisition - The Next 50 Years" and "Outdoor Heritage Fund: A 25 Year Framework". As stated in the WMA acquisition plan, key habitat areas have been identified across the State by the Division of Wildlife, and in order to ensure adequate wildlife lands for future generations, an additional 439,000 acres of new WMAs need to be acquired. In addition, The OHF: A 25 Year Framework notes that of the 18% habitat remaining in the Prairie, which the Cannon River watershed falls within, only 6% is permanently protected. This program supports the protection efforts necessary to enhance existing, and create new, WMAs that provide critical wildlife habitat that is lacking in the Cannon River Watershed due to its vicinity to intensive agriculture pressures.

Which LSOHC section priorities are addressed in this proposal:

Prairie:

- Protect, enhance, or restore existing wetland/upland complexes, or convert agricultural lands to new wetland/upland habitat complexes

Southeast Forest:

- Protect forest habitat through acquisition in fee or easement to prevent parcelization and fragmentation and to provide the ability to access and manage landlocked public properties

Describe how your program will produce and demonstrate a significant and permanent conservation legacy and/or outcomes for fish, game, and wildlife as indicated in the LSOHC priorities:

Our program, through land protection and restoration, will continue to prevent degradation and loss of quality habitat in the Prairie and Southeast Forest section of Minnesota, specifically the Cannon River Watershed. It will improve and increase the amount of available public lands for hunting and angling opportunities within an easy drive for over half of the State's population, and will lead to larger complexes of restored prairies, oak savannas, wetlands, lakeshore, and river shoreline which will reduce flood potential and degradation of aquatic habitat.

We work in partnership with local, state, and federal agencies, and with willing conservation-minded landowners. High quality lands are protected through fee title acquisition. Through our Program, these newly acquired and protected lands, along with lands that are already publicly protected but in a degraded state, are targeted for restoration and enhancement. Protected and restored lands are available to the public for outdoor recreation, including hunting and fishing, thereby addressing the need to provide such opportunities within a relatively short distance from the Twin Cities' growing and diversifying urban population. To date, this multi-year program has permanently protected more than 2,400 acres and restored or enhanced 60 acres in the Cannon River Watershed utilizing the Outdoor Heritage Fund. Recent outreach to landowners has revealed significant interest in permanently protecting and restoring more land with high biological significance in this valuable watershed.

Relationship to other funds:

- Environmental and Natural Resource Trust Fund
- Reinvest in Minnesota

Describe the relationship of the funds:

This program seeks the majority of its funding for acquisition, restoration, and enhancement work from the Outdoor Heritage Fund. Past matching funds have been provided from the Environmental and Natural Resources Trust Fund and Reinvest In Minnesota.

Does this program include leverage in funds:

Yes

A portion of CRWP's DSS and all of CRWP's travel costs and materials/supplies costs related to outreach are provided as privately sourced leverage for this proposal.

One-half of TPL's DSS costs and all of TPL's travel costs are provided as privately sourced leverage for this proposal. TPL will attempt to bring various state, local and private funds to acquire additional property and leverage the OHF grant, and will attempt to leverage fee acquisition with partial donations of the appraised value of protected parcels.

More than one-half of GRG's DSS costs are provided as privately sourced leverage for this proposal. GRG will attempt to bring various local and private funds to leverage the enhancement and restoration activities on protected parcels.

Per MS 97A.056, Subd. 24, Any state agency or organization requesting a direct appropriation from the OHF must inform the LSOHC at the time of the request for funding is made, whether the request is supplanting or is a substitution for any previous funding that was not from a legacy fund and was used for the same purpose:

This proposal does not substitute or supplant previous funding that was not from a Legacy fund.

Describe the source and amount of non-OHF money spent for this work in the past:

Appropriation Year	Source	Amount
2011	ENTRF	350,000
2012	ENTRF	200,000
2012	RIM	105,000
2013	RIM	200,000

How will you sustain and/or maintain this work after the Outdoor Heritage Funds are expended:

Once land has been acquired and conveyed to the DNR, initial site development and restoration of these lands will begin. Estimated costs for initial restoration or enhancement work are included in this proposal. The Trust for Public Land will work with DNR to complete a restoration or enhancement management plan, and implementation of that plan will be completed in the following years. These properties will be managed and maintained by the Minnesota DNR according to their guidelines.

In collaboration with MN DNR, County and SWCD personnel, parcels targeted for restoration will be evaluated by Great River Greening to determine existing and desired conditions for each site. Information gathered will be used to develop site-specific scope of work plans for restoring ecologically desired habitats. Project management plans will detail the methods and practices to be used and a timeline for successful completion of each site/project.

Explain the things you will do in the future to maintain project outcomes:

Year	Source of Funds	Step 1	Step 2	Step 3
2022	TPL - OHF and DNR	Post property	Develop restoration/management plan for property	
2023	TPL - DNR	Develop restoration/management plan for property	Restore and steward property for habitat and public recreation	
2024	TPL - DNR	Restore and steward property for habitat and public recreation		
2022	GRG - OHF	Perform site evaluation and assessment in collaboration with DNR	Develop R/E plan for property. Begin monitoring	Initiate site preparation from R/E work. Continue monitoring
2023	GRG - OHF	Initiate R/E work	Continue R/E depending on appropriate methods and time of year	Continue R/E and begin stewardship as needed using appropriate methods and dependent on time of year
2024	GRG - OHF	Continue R/E and begin stewardship. Target actions to maintain habitat.	Restorative action to correct damage as needed	Evaluate progress and determine if additional actions are needed

Identify indicator species and associated quantities this habitat will typically support:

Several species have been identified by MN DNR to represent various prairie habitat indicator species: pheasant, bobolink, grasshopper sparrow, and monarch butterfly. The metrics are averages derived from existing data sources and/or scientific literature and, as such, do not reflect accuracy at a site-specific scale. Therefore, they are not intended to be used to score or rank requests, but represent the best information available to support the Council's objective.

Pheasant

By looking at the ratios of CRP acres in Minnesota to pheasant harvest, it can be estimated that every three acres of prairie habitat has the potential to produce one harvested pheasant rooster.

Bobolink and Grasshopper Sparrow

The breeding territory size of bobolinks and grasshopper sparrows is estimated at 1.7 and 2.1 acres respectively in high quality habitat. If all of the habitat was occupied, a 100 acre parcel of quality prairie habitat could hold approximately 60 and 48 pairs of bobolinks and grasshopper sparrows respectively.

Monarch Butterfly

University of Minnesota research shows that it takes approximately 30 milkweed plants to result in one monarch butterfly contributing to the overwintering monarch butterfly population in Mexico. Prairies can have between 100-250 milkweed plants per acre. An acre of restored or enhanced prairie could potentially contribute 3 to 8 monarchs to the overwintering population. Additionally, almost 90% of the world's flowering plant species rely on animal pollinators such as bees, butterflies, bats, ants and birds. These animals pollinate plants that stabilize the soil, preventing erosion and improving quality.

Activity Details

Requirements:

If funded, this proposal will meet all applicable criteria set forth in MS 97A.056 - **Yes**

Will county board or other local government approval be formally sought prior to acquisition, per 97A.056 subd 13(j) - **No**

We will follow the County/Township Board notification processes as directed by the current statutory language.

Is the land you plan to acquire (fee title) free of any other permanent protection - **Yes**

Will restoration and enhancement work follow best management practices including MS 84.973 Pollinator Habitat Program - **Yes**

Is the restoration and enhancement activity on permanently protected land per 97A.056, subd 13(f), tribal lands, and/or public waters per MS 103G.005, Subd. 15 - **Yes (WMA, SNA, AMA, Permanently Protected Conservation Easements County/Municipal, State Forests)**

Do you anticipate federal funds as a match for this program - **No**

Land Use:

Will there be planting of corn or any crop on OHF land purchased or restored in this program - **Yes**

Explain

For lands acquired that are conveyed as WMAs to the DNR, the DNR has indicated the following:

The primary purposes of WMAs are to develop and manage for the production of wildlife and for compatible outdoor recreation. To fulfill those goals, the DNR may use limited farming specifically to enhance or benefit the management of state lands for wildlife. Lands proposed to be acquired as WMAs may utilize farming to prepare previously farmed sites for native plant seeding. This is a standard practice across the Midwest. On a small percentage of WMAs (less than 2.5%), DNR uses farming to provide a winter food source for a variety of wildlife species in agriculture-dominated landscapes largely devoid of winter food sources. In some cases this necessitates the use of GMO treated products to facilitate herbicide use in order to control weeds present in the seedbank, however, neonicotinoids will not be used.

Is this land currently open for hunting and fishing - **No**

Will the land be open for hunting and fishing after completion - **Yes**

Lands acquired by The Trust for Public Land will be open for fishing and hunting.

Are there currently trails or roads on any of the acquisitions on the parcel list - **No**

Will new trails or roads be developed or improved as a result of the OHF acquisition - **No**

Will the land that you acquire (fee or easement) be restored or enhanced within this proposals funding and availability? - **Yes**

Land Use:

Have you received OHF dollars in the past through LSOHC? - **Yes**

Past appropriations and spending to date:

Apprp Year	Approp Amount Received	Approp Amount Spent to Date	Leverage as Reported in AP/th>	Leverage Realized to Date	Total Acres Affected in AP	Total Acres Affected to Date	Program Complete and Final Report Approved?
ML11 Cannon River Phase 1	1533000	1533000	326000	699500	510	380	Yes and Yes
ML12 Cannon River Phase 2	1760000	1760000	0	305500	428	322	Yes and Yes
ML13 Cannon River Phase 3	1780000	1780000	0	200000	350	496	Yes and Yes
ML14 Cannon River Phase 4	1430000	1430000	25000	0	270	287	Yes and No
ML15 Cannon River Phase 5	1380000	1380000	138000	0	276	242	Yes and No
ML16 Cannon River Phase 6	583000	583000	90500	65500	80	69	Yes and No
ML17 Cannon River Phase 7	1436000	1393552	76500	61400	220	253	No and No
ML18 Cannon River Phase 8	1345000	856300	70200	4500	357	242	No and No
ML20 Cannon River Phase 9	1148000	0	75800	0	202		No and No

Accomplishment Timeline

Activity	Approximate Date Completed
Landowner negotiations, agreements and due diligence	June 30, 2024
Land acquired	June 30, 2024
Initial site development/restoration	Fall 2024
Finalize restoration and enhancement plans	June 30, 2022
Restoration and enhancement	June 30, 2026

Budget Spreadsheet

Total Amount of Request: \$5,137,900

Budget and Cash Leverage

BudgetName	LSOHC Request	Anticipated Leverage	Leverage Source	Total
Personnel	\$353,200	\$0		\$353,200
Contracts	\$754,300	\$0		\$754,300
Fee Acquisition w/ PILT	\$3,550,000	\$100,000	RIM	\$3,650,000
Fee Acquisition w/o PILT	\$0	\$0		\$0
Easement Acquisition	\$0	\$0		\$0
Easement Stewardship	\$0	\$0		\$0
Travel	\$8,800	\$3,000	Private Sourced,Private Sourced	\$11,800
Professional Services	\$76,500	\$0		\$76,500
Direct Support Services	\$151,800	\$165,800	Private Sourced,Private Sourced,Private Sourced	\$317,600
DNR Land Acquisition Costs	\$60,000	\$0		\$60,000
Capital Equipment	\$0	\$0		\$0
Other Equipment/Tools	\$5,000	\$0		\$5,000
Supplies/Materials	\$103,300	\$1,000	Private Sourced	\$104,300
DNR IDP	\$75,000	\$0		\$75,000
Total	\$5,137,900	\$269,800		\$5,407,700

Personnel

Position	FTE	Over # of years	LSOHC Request	Anticipated Leverage	Leverage Source	Total
Great River Greening Personnel	0.35	5.00	\$91,600	\$0		\$91,600
CRWP Staff	0.50	3.00	\$119,600	\$0		\$119,600
Protection and Legal Staff	0.29	3.00	\$142,000	\$0		\$142,000
Total	1.14	11.00	\$353,200	\$0		\$353,200

Budget and Cash Leverage by Partnership

BudgetName	Partnership	LSOHC Request	Anticipated Leverage	Leverage Source	Total
Personnel	Great River Greening	\$91,600	\$0		\$91,600
Contracts	Great River Greening	\$704,300	\$0		\$704,300
Fee Acquisition w/ PILT	Great River Greening	\$0	\$0		\$0
Fee Acquisition w/o PILT	Great River Greening	\$0	\$0		\$0
Easement Acquisition	Great River Greening	\$0	\$0		\$0
Easement Stewardship	Great River Greening	\$0	\$0		\$0
Travel	Great River Greening	\$8,800	\$0		\$8,800
Professional Services	Great River Greening	\$0	\$0		\$0
Direct Support Services	Great River Greening	\$71,300	\$112,800	Private Sourced	\$184,100
DNR Land Acquisition Costs	Great River Greening	\$0	\$0		\$0
Capital Equipment	Great River Greening	\$0	\$0		\$0
Other Equipment/Tools	Great River Greening	\$5,000	\$0		\$5,000
Supplies/Materials	Great River Greening	\$103,300	\$0		\$103,300
DNR IDP	Great River Greening	\$0	\$0		\$0
Total		\$984,300	\$112,800		\$1,097,100

Personnel - Great River Greening

Position	FTE	Over # of years	LSOHC Request	Anticipated Leverage	Leverage Source	Total
Great River Greening Personnel	0.35	5.00	\$91,600	\$0		\$91,600
Total	0.35	5.00	\$91,600	\$0		\$91,600

BudgetName	Partnership	LSOHC Request	Anticipated Leverage	Leverage Source	Total
Personnel	Cannon River Watershed Partnership	\$119,600	\$0		\$119,600
Contracts	Cannon River Watershed Partnership	\$0	\$0		\$0
Fee Acquisition w/ PILT	Cannon River Watershed Partnership	\$0	\$0		\$0
Fee Acquisition w/o PILT	Cannon River Watershed Partnership	\$0	\$0		\$0

Easement Acquisition	Cannon River Watershed Partnership	\$0	\$0		\$0
Easement Stewardship	Cannon River Watershed Partnership	\$0	\$0		\$0
Travel	Cannon River Watershed Partnership	\$0	\$1,000	Private Sourced	\$1,000
Professional Services	Cannon River Watershed Partnership	\$0	\$0		\$0
Direct Support Services	Cannon River Watershed Partnership	\$32,300	\$4,800	Private Sourced	\$37,100
DNR Land Acquisition Costs	Cannon River Watershed Partnership	\$0	\$0		\$0
Capital Equipment	Cannon River Watershed Partnership	\$0	\$0		\$0
Other Equipment/Tools	Cannon River Watershed Partnership	\$0	\$0		\$0
Supplies/Materials	Cannon River Watershed Partnership	\$0	\$1,000	Private Sourced	\$1,000
DNR IDP	Cannon River Watershed Partnership	\$0	\$0		\$0
Total		\$151,900	\$6,800		\$158,700

Personnel - Cannon River Watershed Partnership

Position	FTE	Over # of years	LSOHC Request	Anticipated Leverage	Leverage Source	Total
CRWP Staff	0.50	3.00	\$119,600	\$0		\$119,600
Total	0.50	3.00	\$119,600	\$0		\$119,600

Budget Name	Partnership	LSOHC Request	Anticipated Leverage	Leverage Source	Total
Personnel	The Trust For Public Land	\$142,000	\$0		\$142,000
Contracts	The Trust For Public Land	\$50,000	\$0		\$50,000
Fee Acquisition w/ PILT	The Trust For Public Land	\$3,550,000	\$100,000	RIM	\$3,650,000
Fee Acquisition w/o PILT	The Trust For Public Land	\$0	\$0		\$0
Easement Acquisition	The Trust For Public Land	\$0	\$0		\$0
Easement Stewardship	The Trust For Public Land	\$0	\$0		\$0
Travel	The Trust For Public Land	\$0	\$2,000	Private Sourced	\$2,000
Professional Services	The Trust For Public Land	\$76,500	\$0		\$76,500
Direct Support Services	The Trust For Public Land	\$48,200	\$48,200	Private Sourced	\$96,400
DNR Land Acquisition Costs	The Trust For Public Land	\$60,000	\$0		\$60,000
Capital Equipment	The Trust For Public Land	\$0	\$0		\$0
Other Equipment/Tools	The Trust For Public Land	\$0	\$0		\$0
Supplies/Materials	The Trust For Public Land	\$0	\$0		\$0
DNR IDP	The Trust For Public Land	\$75,000	\$0		\$75,000
Total		\$4,001,700	\$150,200		\$4,151,900

Personnel - The Trust For Public Land

Position	FTE	Over # of years	LSOHC Request	Anticipated Leverage	Leverage Source	Total
Protection and Legal Staff	0.29	3.00	\$142,000	\$0		\$142,000
Total	0.29	3.00	\$142,000	\$0		\$142,000

Amount of Request: \$5,137,900
Amount of Leverage: \$269,800
Leverage as a percent of the Request: 5.25%
DSS + Personnel: \$505,000
As a % of the total request: 9.83%
Easement Stewardship: \$0
As a % of the Easement Acquisition: -%

How did you determine which portions of the Direct Support Services of your shared support services is direct to this program:

CRWP's DSS request is calculated on allowable direct and necessary expenditures that are not captured in other line items in the budget, and a portion of these allowable direct and necessary costs are contributed as privately sourced leverage. CRWP is in the process of applying for an approved rate with MN DNR.

TPL's DSS request is based upon its federal rate which has been approved by the MN DNR and 50% of these costs are requested from

the OHF grant while 50% is contributed as privately sourced leverage.

GRG's DSS rate has been approved by the DNR on October 4, 2019. GRG's DSS rate includes the allowable direct and necessary expenditures that are not captured in other line items in the budget. A portion, not exceeding 50%, of these costs are requested from the grant and the balance is contributed as privately sourced leverage.

What is included in the contracts line?

CRWP does not have any request for contracted service.

TPL's contract line includes potential site clean-up and initial restoration activities.

GRG's contract line includes restoration/enhancement contracts by service providers.

Does the amount in the travel line include equipment/vehicle rental? - No

Explain the amount in the travel line outside of traditional travel costs of mileage, food, and lodging:

CRWP is not seeking travel costs from the OHF grant.

TPL is not seeking travel costs from the OHF grant.

There are no travel costs in GRG's proposal which lie outside of normal and traditional travel costs.

I understand and agree that lodging, meals, and mileage must comply with the current MMB Commissioner Plan: - Yes

Describe and explain leverage source and confirmation of funds:

CRWP, TPL, GRG will provide some DSS costs as privately sourced leverage and attempt to bring various state, local and private funds to acquire property and conduct enhancement/restoration activities.

CRWP and TPL will provide travel costs as privately sourced leverage.

TPL attempts to leverage fee acquisitions with partial donations.

Does this proposal have the ability to be scalable? - Yes

Tell us how this project would be scaled and how administrative costs are affected, describe the "economy of scale" and how outputs would change with reduced funding, if applicable:

A reduction in funding would reduce outputs proportionally. Program management costs would be the exception, due to program development and oversight remaining somewhat consistent regardless of appropriation amount.

Has funding for these positions been requested in the past? - Yes

Please explain the overlap of past and future staffing and position levels previously received and how that is coordinated over multiple years?

FTEs listed are an estimate of the personnel time required to produce the grant deliverables put forward in this proposal. An array of staff draw from these funds for legal work, negotiating with landowners, crafting of acquisition documents, coordinating with agency partners, working with contractors, restoration and enhancement activities, conducting landowner outreach and managing the grant. We use only those personnel funds necessary to achieve the goals of the grant.

What is the anticipated number of fee title acquisition transactions?

We anticipate we will close 3 to 5 transactions and investigate 3 others.

Output Tables

Table 1a. Acres by Resource Type

Type	Wetlands	Prairies	Forest	Habitats	Total
Restore	0	117	21	0	138
Protect in Fee with State PILT Liability	160	160	160	160	640
Protect in Fee W/O State PILT Liability	0	0	0	0	0
Protect in Easement	0	0	0	0	0
Enhance	0	120	93	0	213
Total	160	397	274	160	991

Table 1b. How many of these Prairie acres are Native Prairie?

Type	Native Prairie
Restore	0
Protect in Fee with State PILT Liability	0
Protect in Fee W/O State PILT Liability	0
Protect in Easement	0
Enhance	0
Total	0

Table 2. Total Requested Funding by Resource Type

Type	Wetlands	Prairies	Forest	Habitats	Total
Restore	\$0	\$272,900	\$54,600	\$0	\$327,500
Protect in Fee with State PILT Liability	\$1,019,400	\$1,019,500	\$1,019,400	\$1,019,400	\$4,077,700
Protect in Fee W/O State PILT Liability	\$0	\$0	\$0	\$0	\$0
Protect in Easement	\$0	\$0	\$0	\$0	\$0
Enhance	\$0	\$374,300	\$358,400	\$0	\$732,700
Total	\$1,019,400	\$1,666,700	\$1,432,400	\$1,019,400	\$5,137,900

Table 3. Acres within each Ecological Section

Type	Metro/Urban	Forest/Prairie	SE Forest	Prairie	Northern Forest	Total
Restore	0	0	26	112	0	138
Protect in Fee with State PILT Liability	0	0	80	560	0	640
Protect in Fee W/O State PILT Liability	0	0	0	0	0	0
Protect in Easement	0	0	0	0	0	0
Enhance	0	0	41	172	0	213
Total	0	0	147	844	0	991

Table 4. Total Requested Funding within each Ecological Section

Type	Metro/Urban	Forest/Prairie	SE Forest	Prairie	Northern Forest	Total
Restore	\$0	\$0	\$79,000	\$248,500	\$0	\$327,500
Protect in Fee with State PILT Liability	\$0	\$0	\$538,200	\$3,539,500	\$0	\$4,077,700
Protect in Fee W/O State PILT Liability	\$0	\$0	\$0	\$0	\$0	\$0
Protect in Easement	\$0	\$0	\$0	\$0	\$0	\$0
Enhance	\$0	\$0	\$178,900	\$553,800	\$0	\$732,700
Total	\$0	\$0	\$796,100	\$4,341,800	\$0	\$5,137,900

Table 5. Average Cost per Acre by Resource Type

Type	Wetlands	Prairies	Forest	Habitats
Restore	\$0	\$2,332	\$2,600	\$0
Protect in Fee with State PILT Liability	\$6,371	\$6,372	\$6,371	\$6,371
Protect in Fee W/O State PILT Liability	\$0	\$0	\$0	\$0
Protect in Easement	\$0	\$0	\$0	\$0
Enhance	\$0	\$3,119	\$3,854	\$0

Table 6. Average Cost per Acre by Ecological Section

Type	Metro/Urban	Forest/Prairie	SE Forest	Prairie	Northern Forest
Restore	\$0	\$0	\$3,038	\$2,219	\$0
Protect in Fee with State PILT Liability	\$0	\$0	\$6,728	\$6,321	\$0
Protect in Fee W/O State PILT Liability	\$0	\$0	\$0	\$0	\$0
Protect in Easement	\$0	\$0	\$0	\$0	\$0
Enhance	\$0	\$0	\$4,363	\$3,220	\$0

Automatic system calculation / not entered by managers

Target Lake/Stream/River Feet or Miles

2 miles

I have read and understand Section 15 of the Constitution of the State of Minnesota, Minnesota Statute 97A.056, and the Call for Funding Request. I certify I am authorized to submit this proposal and to the best of my knowledge the information provided is true and accurate.

Outcomes

Programs in southeast forest region:

- High priority riparian lands, forestlands, and savannas are protected from parcelization and fragmentation *Core parcels are identified in partnership with the DNR as well as the partners of the Cannon River Habitat Complex. Success will be determined based on the acreage of lands protected and the percentage of protected lands in the watershed.*

Programs in prairie region:

- Key core parcels are protected for fish, game and other wildlife *Core parcels are identified in partnership with the DNR as well as the partners of the Cannon River Habitat Protection and Restoration Program. Success will be determined based on the acreage of lands protected and the percentage of protected lands in the watershed.*

Parcel List

Explain the process used to select, rank and prioritize the parcels:

The Trust for Public Land works with its public partners to identify and prioritize projects that meet their objectives and are on their priority lists. Criteria includes whether the land provides critical habitat for game and non-game species and quality public recreational opportunities, presence of unique plants and animals species (including SGCN), goals of conservation plans, adjacency to other public land or habitat complexes, existence of local support, immediacy of threats, landowner willingness and time frame.

Great River Greening works with land owning entities (public and protected private) and interested stakeholders to identify parcels where there is a need for restoration or enhancement of lands and water resources. Parcels are selected using the following criteria: permanently protected status (WMA, AMA, SNA, Forestry, County Conservation, etc.), ecological and habitat value and potential (biodiversity, size and location), congruence with existing plans and priority areas, willing and committed landowners (demonstrated through leveraged match), and leveraging opportunities.

Section 1 - Restore / Enhance Parcel List

Goodhue

Name	TRDS	Acres	Est Cost	Existing Protection?
John Peter Hoffman Spring Brook Valley WMA Ph II	11215207	67	\$219,900	Yes

Le Sueur

Name	TRDS	Acres	Est Cost	Existing Protection?
Diamond Lake WMA Ph II	11023222	58	\$218,600	Yes
Dove Lake WMA Ph I	10924221	43	\$106,200	Yes
Edward Velishek Memorial WMA Ph II	11023212	29	\$78,100	Yes
Seha WMA	10924236	24	\$73,000	Yes

Rice

Name	TRDS	Acres	Est Cost	Existing Protection?
Circle Lake WMA	11121216	60	\$174,800	Yes

Steele

Name	TRDS	Acres	Est Cost	Existing Protection?
Aurora WMA	10619219	70	\$113,700	Yes

Section 2 - Protect Parcel List

Goodhue

Name	TRDS	Acres	Est Cost	Existing Protection?	Hunting?	Fishing?
Cannon River Turtle Preserve SNA Addition 2	11316227	200	\$615,000	No	Full	Full
Little Cannon River AMA	11018201	80	\$700,000	No	Full	Full

Le Sueur

Name	TRDS	Acres	Est Cost	Existing Protection?	Hunting?	Fishing?
Dora Lake WMA Addition	11023214	172	\$650,000	No	Full	Full
Dove Lake WMA Addition	10924221	66	\$290,000	No	Full	Full
Earl Swain WMA Addition	10924222	75	\$450,000	No	Full	Full
Horseshoe Lake AMA/WMA Addition	10923212	127	\$800,000	No	Full	Full

Rice

Name	TRDS	Acres	Est Cost	Existing Protection?	Hunting?	Fishing?
Boyd Sartell WMA Addition	11122233	135	\$745,000	No	Full	Full
Caron Lake Addition 1	11022229	80	\$450,000	No	Full	Full
Caron Lake Addition 2	11022234	280	\$1,075,000	No	Full	Full
Sakatah WMA Addition	10922216	80	\$210,000	No	Full	Full

Steele

Name	TRDS	Acres	Est Cost	Existing Protection?	Hunting?	Fishing?
Aurora WMA Addition 2	10619219	50	\$230,000	No	Full	Full

Waseca

Name	TRDS	Acres	Est Cost	Existing Protection?	Hunting?	Fishing?
Moonan Marsh WMA Addition	10822225	75	\$316,000	No	Full	Full

Section 2a - Protect Parcel with Bldgs

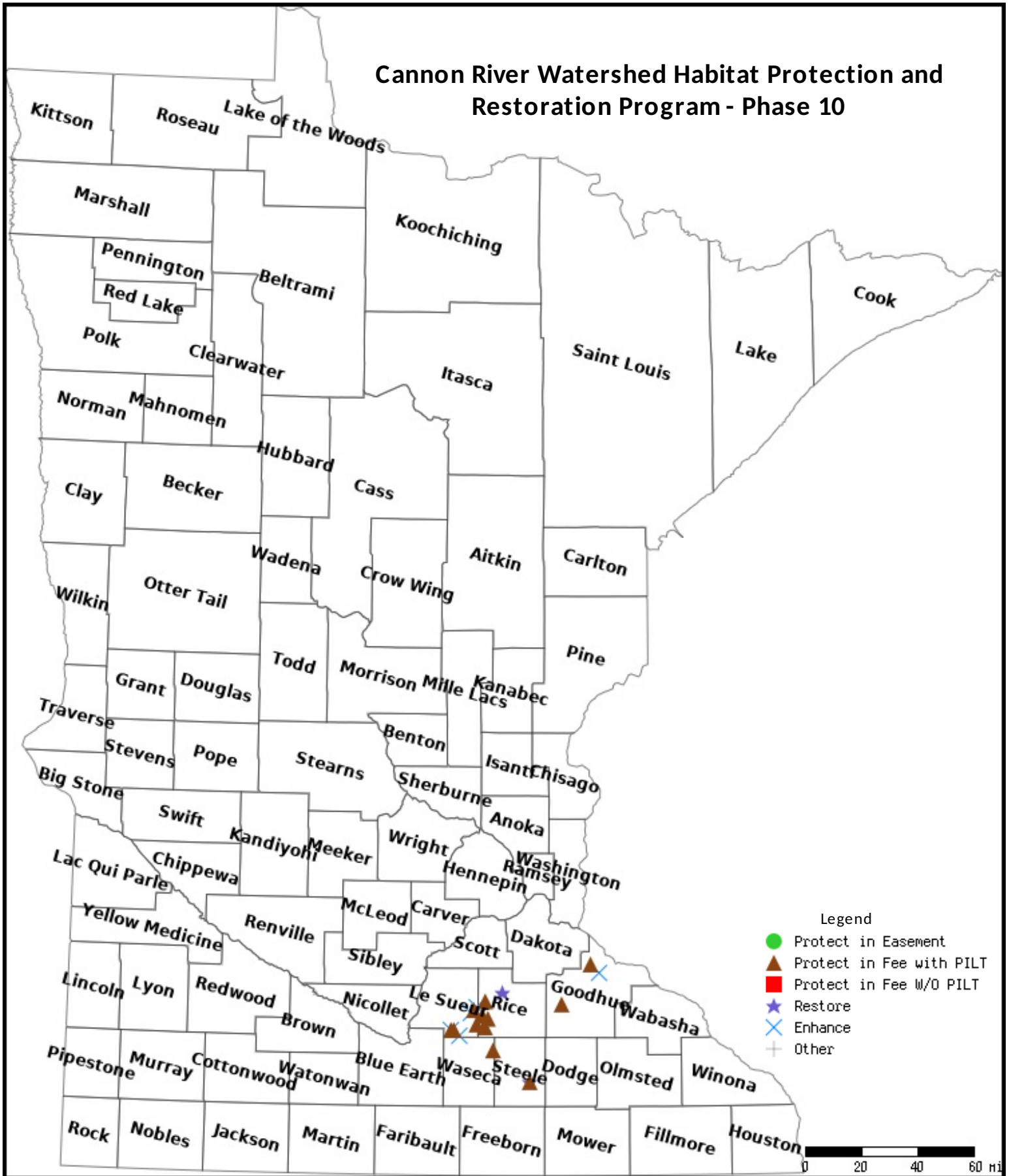
No parcels with an activity type protect and has buildings.

Section 3 - Other Parcel Activity

No parcels with an other activity type.

Parcel Map

Cannon River Watershed Habitat Protection and Restoration Program - Phase 10



Data Generated From Parcel List

CANNON RIVER WATERSHED

HABITAT AND RESTORATION PROGRAM

PHASE 10

ABOUT THE PROGRAM

The goals of this program are to protect existing high quality habitat, restore degraded habitat, prevent degradation of water quality, and provide public access to lands within the Cannon River Watershed.

Over the next 3 to 5 years, this request will permanently protect approximately 640 acres and restore or enhance approximately 351 acres of high priority wildlife habitat, creating new public accesses within an hour drive for more than half of all Minnesotans.



Prairie Creek WMA



Circle Lake WMA



Sunktokeca Creek WMA

OUTDOOR HERITAGE FUND REQUEST

\$5,137,900 to protect more than 600 acres and restore or enhance more than 300 acres

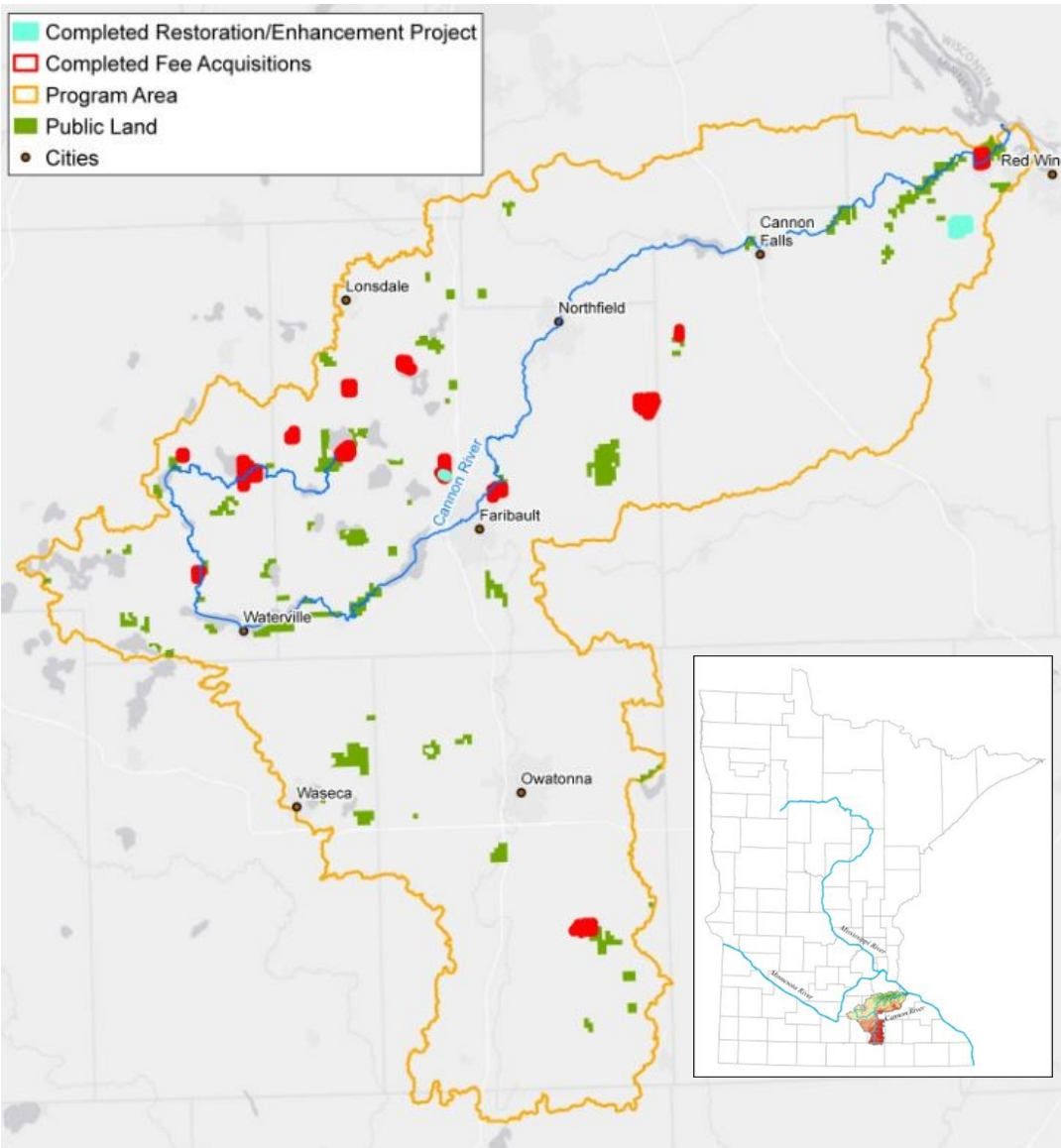
CANNON RIVER WATERSHED

Located south of the Twin Cities, the 1,460 sq. mile Cannon River Watershed includes over 800 linear miles of streams and rivers that drain a diverse landscape. Historically comprised of Big Woods, prairie and wetland habitat, the landscape is now dominated by agricultural fields and, to a lesser extent, development. **Today, only 18% of the landscape remains as forest, wetland or prairie habitat and many of these areas have been degraded.** High quality habitat in the Cannon River Watershed continues to be degraded by invasive species or converted to rural residential development and to agricultural production. Protection, restoration, and enhancement of high quality habitat are important for maintaining what remains of the region's unimpaired waters and increasingly vital habitat needs.

ACCOMPLISHMENTS

- Created 7 new Wildlife Management Areas (WMAs) and expanded 5 other WMAs
- Expanded Cannon River Turtle Preserve Scientific and Natural Area by 25%
- Permanently protected more than 2,400 acres
- Completed habitat restorations and enhancements of 37 acres at Sunktokeca Creek WMA and 23 acres at John Peter Hoffman Springbrook Valley WMA

These protected and restored places now provide valued habitat for a wide variety of wildlife, and offer quality hunting opportunities for waterfowl, deer, pheasant and turkeys within an hour of the Twin Cities.



PARTNERS

Cannon River Watershed Partnership, a member-based, nonprofit organization, envisions a community that creates and protects a watershed with healthy soils; drinkable groundwater; and clean, fishable, and swimmable rivers, lakes, and streams. Now in its 30th year, CRWP's partners with people and organizations to value, protect, and improve the Cannon River Watershed's land and water. CRWP will administer the program and conduct landowner outreach.

The Trust for Public Land works to protect land and create parks for people, ensuring healthy, livable communities for generations to come. TPL will be responsible for protecting land in fee.

Great River Greening has worked for 25 years restoring land and water resources throughout Minnesota. With the help of local volunteers, GRG has restored degraded forests and prairies and improved our outdoor recreation experiences, our economy and our drinking water. GRG will be responsible for restoring and enhancing habitat.

For more information about this proposal, please contact Kristi Pursell, CRWP Executive Director at 507-786-3913 or kristi@crwp.net

