



Lessard-Sams Outdoor Heritage Council

Minnesota Forest Recovery Project Phase III
ML 2025 Request for Funding

General Information

Date: 05/31/2024

Proposal Title: Minnesota Forest Recovery Project Phase III

Funds Requested: \$10,276,500

Confirmed Leverage Funds: \$150,000

Is this proposal Scalable?: Yes

Manager Information

Manager's Name: Jim Manolis

Title: Forest Strategy and Stewardship Director

Organization: The Nature Conservancy

Address: 1101 West River Parkway

City: Minneapolis, MN 55415

Email: jim.manolis@tnc.org

Office Number: 612-331-0796

Mobile Number: 612-810-5400

Fax Number: 612-331-0770

Website: nature.org/minnesota

Location Information

County Location(s): Itasca, St. Louis, Lake, Cook, Cass and Beltrami.

Eco regions in which work will take place:

- Northern Forest

Activity types:

- Enhance
- Protect in Easement

Priority resources addressed by activity:

- Forest

Narrative

Abstract

Northern Minnesota's forests face unprecedented challenges that must be addressed now in order to maintain benefits for fish, wildlife and climate. Emerald ash borer, spruce budworm, excessive fuel loads, and a changing climate threaten more than 1,700,000 acres of forest. Development pressures continue to fragment important wildlife habitats. To address these issues, this project builds on the success of past Forest Recovery Project Phases 1-2 to enhance 21,000 acres through tree species diversification, mechanical fuels treatments, and prescribed burning. It will also help ensure habitat connectivity by protecting 1600 acres in forest conservation easements.

Design and Scope of Work

In northern Minnesota, vast expanses of forest are now in poor condition with diminished value for wildlife. Emerald ash borer is marching north, threatening up to a million acres of black ash forests. The current spruce budworm outbreak has damaged over 670,000 acres of forest and compounds a broader issue of excessive fuel loads. A changing climate exacerbates all of these issues, and development pressures continue to fragment large tracts of contiguous forests.

To address these threats, the Forest Recovery Project uses a collaborative, landscape-scale approach to scale up appropriate enhancements and targeted conservation easements. Phases 1-2 of the project enhanced 12,000 acres of forest, complemented by an additional 49,000 acres of enhancements conducted with other funds since 2007. In Phase 3 of the project, we're poised to scale up this work through 21,000 acres of enhancements.

Enhancement categories and treatments include:

- Treating spruce budworm impacted forests to remove dead/dying trees via chainsaw work, roller chopping, anchor chaining, rock raking, winter shearing, and/or mulching, followed by tree planting to regenerate the stands.
- Increasing tree species diversity in black ash stands ahead of emerald ash borer infestation.
- Enhancing riparian corridor habitat and connectivity along streams, rivers, and undeveloped lakeshores.
- Reducing woody fuels using mechanical equipment, hand crews and prescribed burning.
- Planting and tending trees to increase forest diversity and resilience.

We use a collaborative approach to identify enhancement sites across DNR, US Forest Service, Leech Lake Band of Ojibwe, and Beltrami, Lake, and St. Louis County lands. We continually seek additional landowner partners. Other partners who help identify sites include the 1854 Treaty Authority, The Minnesota Land Trust, and the Ruffed Grouse Society, and multi-partner collaborative groups including the Arrowhead, North Shore Forest, and Manitou collaboratives and Minnesota Forest Resource Council Landscape Committees.

Conservation easements will be acquired from willing sellers. In collaboration with the MN DNR Forests for the Future Program, we are purposely keeping options open to match landowners with the conservation easement option that works best for them (DNR or TNC). We are prioritizing sites based on factors including tract size, Minnesota Biological Survey data, aquatic features, contribution to larger complexes of protected forest land, forest condition, and relevance to the Resilient and Connected Network data (developed by TNC scientists and partners). We seek to conserve the largest and most important gaps in the Resilient and Connected Network. Currently, we are working on a multi-phase project that will require a portion of Phase 3 funding to complete.

Our implementation model includes a combination of partner consultation, TNC Staffing, and contracted field crews and operators. TNC forest program staffing is essential to communicate frequently with partners, map and

plan annual work, conduct site reconnaissance, set up and manage contracts, monitor progress, and report results. Seasonal staff assist with prescribed fire and fuels work.

Explain how the proposal addresses habitat protection, restoration, and/or enhancement for fish, game & wildlife, including threatened or endangered species conservation

This proposal addresses habitat enhancement for fish, game and wildlife in several main ways. First, it increases or improves habitats that have declined or have been degraded. Second, it helps prevent future degradation and habitat loss. And finally, it enhances habitat connectivity.

Examples of degraded forests include spruce budworm impacted stands and large areas of birch decline along the North Shore. The degradation of these stands results in overall loss of forest cover and structural diversity that are important for wildlife, often getting stuck in brushy conditions that do not regenerate well without new disturbance and planting. Our treatments help re-establish long-lived conifers that benefit species of greatest conservation need such as:

- Evening Grosbeak
- Olive-sided Flycatcher
- Spruce Grouse
- Purple Finch
- Connecticut Warbler
- Black-backed Woodpecker
- Winter Wren
- Moose
- Boreal Owl
- Canada Lynx

Many spruce-budworm-impacted stands can be found in riparian areas along North Shore trout streams. A loss of forest cover is detrimental to trout and other cold-water species, because shade from trees helps keep these waters cold. This is especially important in a warming climate. In addition, maintaining forest cover along streams is important for habitat structure and connectivity for many terrestrial species. Species that benefit from our riparian forest treatments include:

- Veery
- Black-billed Cuckoo
- Olive-sided Flycatcher
- Common Merganser
- Winter Wren
- Four-toed salamander
- Eastern red-backed salamander
- Coaster Brook Trout
- Lake Sturgeon

Another example of degraded forests are those with excessive fuel buildup. These stands are at risk of fire and often lack open, younger forest conditions. Mechanical treatments and prescribed fire reduce catastrophic fire risk and create younger forest conditions that benefit wildlife such as:

- Golden-winged Warbler
- Veery
- American Woodcock
- Moose
- Whitetail deer
- Ruffed Grouse

Finally, the conservation easement component of our project will help ensure long-term habitat connectivity for species that depend on large continuous tracts of forest.

What are the elements of this proposal that are critical from a timing perspective?

Minnesota's forests are in trouble. A recent analysis conducted by The Nature Conservancy found that about 30% of forests in Northern Minnesota need enhancement to improve habitat and resilience. Our current pace of action to enhance and protect Minnesota's iconic Northwoods forests is being out matched and over-run by insects, diseases, the effects of a declining workforce, and changes to markets for forest products. Many of the negative predictions about our forest health and integrity are coming true and then some. Fortunately, the strength and effectiveness of partnerships between public agencies, NGOs, tribes, and forest industry are also stronger and more effective than what might have been predicted 10 years ago. We have many of the answers and tools in place to get ahead of the threats to the Northwoods. Investing now will make a difference and can set forests up to require less investment in the future.

Describe how the proposal expands habitat corridors or complexes and/or addresses habitat fragmentation:

For prioritizing lands for conservation easements, we are explicitly seeking to build conservation complexes and protect habitat corridors. We are targeting some of the larger private holdings in otherwise conserved areas to help ensure landscape contiguity and prevent habitat fragmentation. We are using The Nature Conservancy's Resilient and Connected Network data, developed in collaboration with hundreds of state, federal, and academic scientists to create a continental network of lands and waters that are resilient and will allow nature to adapt to a changing climate. Northern Minnesota, and Great Lakes forests in general, are a key continental priority in that network. We will prioritize among those parcels with the other data mentioned above including MN Biological Survey data.

For our enhancement work, we continually seek opportunities to create larger complexes of habitat by combining treatments across landowner boundaries. Riparian corridors are some of the most important elements of connectivity on the landscape which is why our proposal targets them specifically for enhancement.

Which top 2 Conservation Plans referenced in MS97A.056, subd. 3a are most applicable to this project?

- Minnesota Forest Resource Council Landscape Plans
- Minnesota's Wildlife Action Plan 2015-2025

Explain how this proposal will uniquely address habitat resilience to climate change and its anticipated effects on game, fish & wildlife species utilizing the protected or restored/enhanced habitat this proposal targets.

The Nature Conservancy has a long history of analyzing and addressing climate change threats through our protection and enhancement actions. One foundation for this work is our nation-wide data identifying a "resilient and connected network" of sites that expected to be most resilient to climate change. We use this data to prioritize all of our work. At the implementation stage, we prioritize a suite of climate change adaptation tactics identified in scientific literature that are expected to be most effective for ensuring habitat resilience. These include ensuring and increasing connectivity, increasing species and habitat structural diversity, and assisting short-range species migration that anticipates habitat change driven by climate change. We are planting tree species, using seed sources, and targeting habitats for enhancement that are predicted to have the best chance of persisting and providing habitat for wildlife into the future.

Which LSOHC section priorities are addressed in this proposal?

Northern Forest

- Restore forest-based wildlife habitat that has experienced substantial decline in area in recent decades

Describe how this project/program will produce and demonstrate a significant and permanent conservation legacy and/or outcomes for fish, game, and wildlife, and if not permanent outcomes, why it is important to undertake at this time:

The Nature Conservancy is committed to conserving a dynamic mosaic of healthy lands and waters that will sustain and enhance a broad diversity of species and local communities. From protecting discrete parcels of land to conserving entire ecosystems through strategic planning and mobilizing policy initiatives, we seek to make tangible, lasting, and measurable results in critical places. We have been actively protecting and managing forests in Minnesota for more than 50 years. Investment in site preparation, tree planting for diversity enhancement, brush removal, browse protection, and implementing controlled burns is costly up-front, but becomes more sustainable once those investments have been made. All conservation easements will be permanent and stewardship funds will ensure ongoing funding for annual monitoring. The Nature Conservancy has a strong track record of finding a wide array of funds and garnering partner resources to mobilize ongoing enhancement and restoration. We strive to sustain the long-term legacy of investments made through our work.

Outcomes

Programs in the northern forest region:

- Improved availability and improved condition of habitats that have experienced substantial decline ~ *We will seek and leverage funds to measure regeneration success, structural variables, and other measures of stand condition of treated sites. We will encourage landowner partners to do the same.*

What other dedicated funds may collaborate with or contribute to this proposal?

- Other

Per MS 97A.056, Subd. 24, Please explain whether the request is supplanting or is a substitution for any previous funding that was not from a legacy fund and was used for the same purpose.

This proposal does not substitute or supplant previous funding that was not from a legacy fund.

How will you sustain and/or maintain this work after the Outdoor Heritage Funds are expended?

This project will strengthen and support the many collaborative efforts across the forested region by mobilizing efforts to increase the pace and scale of forest protection, restoration and enhancement. Through this effort, we are developing consistent methodologies and approaches that can be institutionalized through a collaborative process, thus ensuring a long-term commitment that follows ecological need and urgency. When possible, Outdoor Heritage funds will be used to leverage federal and private funds to expand restoration and enhancement efforts to the most critically needed locations.

Actions to Maintain Project Outcomes

Year	Source of Funds	Step 1	Step 2	Step 3
1-7	We will seek a mix of private and public funds	Install browse protection on planted seedlings, remove fuel loads or burn on appropriate sites	Monitor seedling survival, fuel, burn success	-
5	We will seek a mix of private and public funds	Release/cut competing brush around seedlings	-	-
20, 40, 60	Landowner responsibility	Check stand condition	Treat as appropriate	-
7, 10	We will seek a mix of private and public funds	Check sapling condition, repeat burns on appropriate sites	Prune white pines for blister rust	-

Provide an assessment of how your program may celebrate cultural diversity or reach diverse communities in Minnesota, including reaching low- and moderate-income households:

Phases 1-2 of the project already includes the Leech Lake Band of the Ojibwe as a partner through their Division of Resource Management (DRM), with several projects emphasizing interests of the band within the Leech Lake Reservation and its overlap with the Chippewa National Forest. These include prescribed fire to enhance pine woodland systems, blueberry regeneration and associated open habitats, and enhancing diversity in black ash stands. These are reservation interests that were initiated by the Leech Lake DRM. TNC recently updated a Memorandum of Understanding with the Leech Lake Division of Resource Management that provides a mechanism for further collaboration on mutual goals.

Through TNC private funding, we are also working to engage a with a range of Indigenous Nations to look for opportunities to partner and meet mutual goals. One example is two listening sessions held in with Indigenous Nations in 2022, focused on reforestation opportunities in Minnesota. In these sessions, we heard especially about Indigenous interest in diversifying black ash stands, concern about addressing the spruce budworm outbreak, and work force and capacity issues.

Another step we took in 2023 was to hire a Tribal Nations & Indigenous Communities Partnership Director. This Director is now strengthening relationships between TNC and Tribes, and will help us develop connections between the Forest Recovery Project and Tribal conservation efforts.

Over the past several years, TNC has also strengthened its overall capacity to increase diversity, equity, and inclusion in all of our work, especially in the area of hiring practices. We are starting to see a more diverse seasonal and permanent work force that is essential for engaging with diverse communities throughout Minnesota.

Activity Details

Requirements

Is the land you plan to acquire (easement) free of any other permanent protection?

Yes

Will restoration and enhancement work follow best management practices including MS 84.973 Pollinator Habitat Program?

Yes

Is the restoration and enhancement activity on permanently protected land per 97A.056, Subd 13(f), tribal lands, and/or public waters per MS 103G.005, Subd. 15 or on lands to be acquired in this program?

Yes

Where does the activity take place?

- WMA
- Permanently Protected Conservation Easements
- County/Municipal
- State Forests
- Other : US Forest Service Lands
- AMA

Land Use

Will there be planting of any crop on OHF land purchased or restored in this program, either by the proposer or the end owner of the property, outside of the initial restoration of the land?

No

Will insecticides or fungicides (including neonicotinoid and fungicide treated seed) be used within any activities of this proposal either in the process of restoration or use as food plots?

No

Will the eased land be open for public use?

No

Are there currently trails or roads on any of the proposed acquisitions?

No

Will new trails or roads be developed or improved as a result of the OHF acquisition?

No

Will the land that you acquire (fee or easement) be restored or enhanced within this proposal's funding and availability?

No

Explain how, when, and source of the R/E work:

Enhancement work in this project emphasizes lands that are already protected. Restoration and enhancement on acquired easements may be considered in future phases of this project, if needed.

Other OHF Appropriation Awards

Have you received OHF dollars through LSOHC in the past?

Yes

Are any of these past appropriations still OPEN?

Yes

Approp Year	Funding Amount Received	Amount Spent to Date	Funding Remaining	% Spent to Date
2022	\$4,585,000	\$1,322,619	\$3,262,381	28.85%
2019	\$1,058,000	\$1,058,000	-	100.0%
Totals	\$5,643,000	\$2,380,619	\$3,262,381	42.19%

Timeline

Activity Name	Estimated Completion Date
Complete first season of site preparation	July-December 2025
Complete first season of browse protection	November 2025
Complete first season of planting	May 2026
Complete second season of site preparation	July-December 2026
Complete second season of planting	May 2027
Complete third season of site preparation	July-December 2027
Complete third season of planting	May 2028
Conservation easements: Landowner outreach and due diligence	July 2025-June 2029
Complete second season of browse protection	November 2026
Acquire conservation easements	June 2029
Complete final prescribed burns	June 2029

Budget

Totals

Item	Funding Request	Total Leverage	Leverage Source	Total
Personnel	\$923,000	\$50,000	TNC Private Donations	\$973,000
Contracts	\$5,000,000	\$200,000	USFS In-kind labor	\$5,200,000
Fee Acquisition w/ PILT	-	-	-	-
Fee Acquisition w/o PILT	-	-	-	-
Easement Acquisition	\$2,000,000	-	-	\$2,000,000
Easement Stewardship	\$135,000	-	-	\$135,000
Travel	\$37,500	-	-	\$37,500
Professional Services	\$112,500	-	-	\$112,500
Direct Support Services	\$568,000	-	-	\$568,000
DNR Land Acquisition Costs	-	-	-	-
Capital Equipment	-	-	-	-
Other Equipment/Tools	-	-	-	-
Supplies/Materials	\$1,500,500	\$100,000	TNC Private Donations	\$1,600,500
DNR IDP	-	-	-	-
Grand Total	\$10,276,500	\$350,000	-	\$10,626,500

Personnel

Position	Annual FTE	Years Working	Funding Request	Total Leverage	Leverage Source	Total
Forester, Coordination Support, Protection, Grants admin.	3.4	3.0	\$923,000	\$50,000	TNC Private Donations	\$973,000

Amount of Request: \$10,276,500

Amount of Leverage: \$350,000

Leverage as a percent of the Request: 3.41%

DSS + Personnel: \$1,491,000

As a % of the total request: 14.51%

Easement Stewardship: \$135,000

As a % of the Easement Acquisition: 6.75%

Total Leverage (from above)	Amount Confirmed	% of Total Leverage	Amount Anticipated	% of Total Leverage
\$350,000	\$150,000	42.86%	\$200,000	57.14%

Detail leverage sources and confirmation of funds:

Leverage sources include conservative estimates of US Forest Services In-kind labor and confirmed TNC Private funding that will contribute to supplies and staff time. We anticipate confirmation of additional leverage that we can provide at the time of the hearing.

Does this proposal have the ability to be scalable?

Yes

If the project received 50% of the requested funding

Describe how the scaling would affect acres/activities and if not proportionately reduced, why?

For the easement portion, we estimate that 50% of requested funding would result in 45% of original results (720 vs. 1600 acres) due to fixed project management costs. For the enhancement portion, we estimate that 50% of requested funding would result in 45% of enhancements (9450 vs. 21,000 acres).

Describe how personnel and DSS expenses would be adjusted and if not proportionately reduced, why?

Staff costs are estimated to be reduced to 60% with 50% funding due to some fixed costs of managing the project. This would increase the proportion of DSS + Personnel/out of total request slightly, by about 1% over the fully funded request.

If the project received 30% of the requested funding

Describe how the scaling would affect acres/activities and if not proportionately reduced, why?

For the easement portion, we estimate that 30% of requested funding would result in 25% of original results (400 vs. 1600 acres) due to fixed project management costs. For the enhancement portion, we estimate that 30% of requested funding would result in 25% of enhancements (5250 vs. 21,000 acres).

Describe how personnel and DSS expenses would be adjusted and if not proportionately reduced, why?

Staff costs are estimated to be reduced to 40% with 30% funding due to some fixed costs of managing the project. This would increase the proportion of DSS + Personnel/out of total request slightly, by about 1% over the fully funded request.

Personnel

Has funding for these positions been requested in the past?

Yes

Please explain the overlap of past and future staffing and position levels previously received and how that is coordinated over multiple years?

Phase III builds on and expands upon Phase II. In Phase II, OHF funds covered 1.7 FTEs, split across several positions for program coordination, and on-the-ground implementation. Phase III adds to this capacity to 3.4 FTEs, to accelerate work on the ground and support easement acquisitions. Continuity of funding across multiple phases allows us flexibility when prioritizing parcels for protection or enhancement. Further, it ensures stability in our staffing model and provides the ability to plan and prioritize projects over multiple years. The flexibility provided by stable funding is critically important to achieving conservation goals given the uncertainty and variability of field season weather conditions.

Contracts

What is included in the contracts line?

The entire contracts line is dedicated to enhancement work. Typical contractors include private vendors that manage hand crews or heavy equipment operators. This proposal includes adjustments to account for Prevailing Wage requirements which result in higher cost/acre. TNC will continue to work with MN DLI on Prevailing Wage applicability.

Professional Services

What is included in the Professional Services line?

- Appraisals
- Other : environmental and minerals assessments
- Surveys
- Title Insurance and Legal Fees

Easement Stewardship

What is the number of easements anticipated, cost per easement for stewardship, and explain how that amount is calculated?

We anticipate 2-3 conservation easement acquisitions and have budgeted \$45,000 per easement for stewardship based on rates used by TNC and partners.

Travel

Does the amount in the travel line include equipment/vehicle rental?

Yes

Explain the amount in the travel line outside of traditional travel costs of mileage, food, and lodging

Where it is more cost-effective than paying mileage reimbursement, we have budgeted for car rental and fuel reimbursement.

I understand and agree that lodging, meals, and mileage must comply with the current MMB Commissioner Plan:

Yes

Direct Support Services

How did you determine which portions of the Direct Support Services of your shared support services is direct to this program?

DSS is based on The Nature Conservancy's Federal Negotiated Rate (FNR) as proposed and approved by the US Dept. of Interior on an annual basis. In this proposal we are requesting reimbursement of 7.5% of eligible base costs as determined by our annual FNR and based on suggestions from the Council in prior years' hearings. The amount requested for reimbursement represents less than one-third of the total reimbursable costs allowed under the FNR. Examples of expenses included in the FNR include services from in-house legal counsel; finance, human resources; and information technology support, all of which contribute directly to the implementation of the project. The FNR is not applied to capital equipment over \$50,000 or land acquisition.

Federal Funds

Do you anticipate federal funds as a match for this program?

No

Output Tables

Acres by Resource Type (Table 1)

Type	Wetland	Prairie	Forest	Habitat	Total Acres
Restore	0	0	0	0	0
Protect in Fee with State PILT Liability	0	0	0	0	0
Protect in Fee w/o State PILT Liability	0	0	0	0	0
Protect in Easement	0	0	1,600	0	1,600
Enhance	0	0	21,000	0	21,000
Total	0	0	22,600	0	22,600

Total Requested Funding by Resource Type (Table 2)

Type	Wetland	Prairie	Forest	Habitat	Total Funding
Restore	-	-	-	-	-
Protect in Fee with State PILT Liability	-	-	-	-	-
Protect in Fee w/o State PILT Liability	-	-	-	-	-
Protect in Easement	-	-	\$2,366,500	-	\$2,366,500
Enhance	-	-	\$7,910,000	-	\$7,910,000
Total	-	-	\$10,276,500	-	\$10,276,500

Acres within each Ecological Section (Table 3)

Type	Metro/Urban	Forest/Prairie	SE Forest	Prairie	N. Forest	Total Acres
Restore	0	0	0	0	0	0
Protect in Fee with State PILT Liability	0	0	0	0	0	0
Protect in Fee w/o State PILT Liability	0	0	0	0	0	0
Protect in Easement	0	0	0	0	1,600	1,600
Enhance	0	0	0	0	21,000	21,000
Total	0	0	0	0	22,600	22,600

Total Requested Funding within each Ecological Section (Table 4)

Type	Metro/Urban	Forest/Prairie	SE Forest	Prairie	N. Forest	Total Funding
Restore	-	-	-	-	-	-
Protect in Fee with State PILT Liability	-	-	-	-	-	-
Protect in Fee w/o State PILT Liability	-	-	-	-	-	-
Protect in Easement	-	-	-	-	\$2,366,500	\$2,366,500
Enhance	-	-	-	-	\$7,910,000	\$7,910,000
Total	-	-	-	-	\$10,276,500	\$10,276,500

Average Cost per Acre by Resource Type (Table 5)

Type	Wetland	Prairie	Forest	Habitat
Restore	-	-	-	-
Protect in Fee with State PILT Liability	-	-	-	-
Protect in Fee w/o State PILT Liability	-	-	-	-
Protect in Easement	-	-	\$1,479	-
Enhance	-	-	\$376	-

Average Cost per Acre by Ecological Section (Table 6)

Type	Metro/Urban	Forest/Prairie	SE Forest	Prairie	N. Forest
Restore	-	-	-	-	-
Protect in Fee with State PILT Liability	-	-	-	-	-
Protect in Fee w/o State PILT Liability	-	-	-	-	-
Protect in Easement	-	-	-	-	\$1,479
Enhance	-	-	-	-	\$376

Target Lake/Stream/River Feet or Miles

111

Parcels

Sign-up Criteria?

No

Explain the process used to identify, prioritize, and select the parcels on your list:

For prioritizing lands for conservation easements, we are targeting some of the larger private holdings in otherwise conserved areas to help ensure landscape contiguity and prevent habitat fragmentation. We are using The Nature Conservancy’s Resilient and Connected Network data, developed in collaboration with hundreds of state, federal, and academic scientists to create a continental network of lands and waters that are resilient and will allow nature to adapt to a changing climate. We will prioritize among those parcels with the other data mentioned above including MN Biological Survey data.

For our enhancement work, we drew from a large pool of sites that TNC and partners identified as in need of habitat enhancement. To narrow this pool to the set of submitted parcels, we used a coarse-filter approach that considered partner priorities, geographic distribution across landscapes, distribution across partners, and overlap with the Resilient and Connected Network (which incorporates MN Biological Survey Data and the Minnesota Wildlife Action Network). The resulting parcel list is representative of enhancement need and opportunity, but is not intended to be exact. Upon initiation of Phase III of this project, we will revisit the parcel list and consider new, pertinent information. This information will include GIS Lidar-based data on forest complexity, information on insect damage or other disturbances, and any changes in management. This process allows for substitution of sites to adjust for environmental change or new opportunities (e.g., disturbance, new opportunities to leverage other funding).

Restore / Enhance Parcels

Name	County	TRDS	Acres	Est Cost	Existing Protection	Description
Jessie Lake RX	Beltrami	14731231	80	\$16,000	Yes	Under-burn
Schram Lake RX	Beltrami	14630228	450	\$90,000	Yes	Under-burn
Permanent Openings (upland grass)	Cass	14230229	400	\$40,000	Yes	Broadcast
Lydick Brook RX	Cass	14529208	130	\$26,000	Yes	Under-burn
Kidolm Lake RX	Cass	14127222	150	\$30,000	Yes	Under-burn
Tanglewood RX	Cass	14130219	238	\$47,600	Yes	Under-burn
Foot Lake RX	Cass	14530224	100	\$20,000	Yes	Under-burn
Oak Point Rx	Cass	14331213	616	\$123,200	Yes	Under-burn
North Two Pines	Cass	14529216	134	\$26,800	Yes	Under-burn
Pine Point RX	Cass	14231201	1,392	\$278,400	Yes	Under-burn
Moss Lake RX	Cass	14431203	181	\$36,200	Yes	Under-burn
Goose Lake RX	Cass	14129226	367	\$73,400	Yes	Under-burn
West Six Mile	Cass	14528236	213	\$42,600	Yes	Under-burn
Bluff 6	Cook	06102211	36	\$7,200	Yes	Site preparation, plant, browse protection, release
Heavyweight Stewardship 4	Cook	06102231	47	\$9,400	Yes	Site preparation, plant, browse protection, release
Halls Pond Non-Harvest	Cook	06103224	17	\$3,400	Yes	Site preparation, plant, browse protection, release
H61 8	Cook	06102110	31	\$6,200	Yes	Site preparation, plant, browse protection, release

H61 6	Cook	06204117	70	\$14,000	Yes	Site preparation, plant, browse protection, release
H61 5	Cook	06203126	27	\$5,400	Yes	Site preparation, plant, browse protection, release
Smokey 5	Cook	05904229	55	\$11,000	Yes	Site preparation, plant, browse protection, release
H61 3	Cook	06102108	72	\$14,400	Yes	Site preparation, plant, browse protection, release
H61 18	Cook	06101234	36	\$7,200	Yes	Site preparation, plant, browse protection, release
Sawbill Hardwood Gaps	Cook	05904216	9	\$1,800	Yes	Site preparation, plant, browse protection, release
Moosehorn Lake Riparian	Cook	06303136	74	\$5,550	Yes	Gap cutting and diversity planting in riparian buffers
Laker 7	Cook	06202131	33	\$6,600	Yes	Site preparation, plant, browse protection, release
Laker 6	Cook	06101112	5	\$1,000	Yes	Site preparation, plant, browse protection, release
Squash 2	Cook	05905211	16	\$3,200	Yes	Site preparation, plant, browse protection, release
Spud 5	Cook	06201134	1	\$200	Yes	Site preparation, plant, browse protection, release
Spud 4	Cook	06201134	29	\$5,800	Yes	Site preparation, plant, browse protection, release
Cascade River Riparian	Cook	06202236	137	\$10,275	Yes	Gap cutting and diversity planting in riparian buffers
Spud 3	Cook	06201127	1	\$200	Yes	Site preparation, plant, browse protection, release
Caribou Hunter Non-Harvest	Cook	06103226	11	\$2,200	Yes	Site preparation, plant, browse protection, release
Burnt Creek	Cook	06204221	4	\$800	Yes	Site preparation, plant, browse protection, release
Breezy 5	Cook	06004213	40	\$8,000	Yes	Site preparation, plant, browse protection, release
Breezy 4	Cook	06003217	122	\$24,400	Yes	Site preparation, plant, browse protection, release
Breezy 3	Cook	06003218	54	\$10,800	Yes	Site preparation, plant, browse protection, release
Breezy 2 2025 planting	Cook	06003218	10	\$2,000	Yes	Site preparation, plant, browse protection, release
Breezy 2 2023 planting	Cook	06003218	28	\$5,600	Yes	Site preparation, plant, browse protection, release
Breezy 1	Cook	06003218	25	\$5,000	Yes	Site preparation, plant, browse protection, release
Jonvik WMA II	Cook	06102226	50	\$3,750	Yes	Gap cutting and diversity planting in riparian buffers
Spud 2	Cook	06201127	43	\$8,600	Yes	Site preparation, plant, browse protection, release
Bluff 5	Cook	06102211	32	\$6,400	Yes	Site preparation, plant, browse protection, release
Bluff 4	Cook	06102211	70	\$14,000	Yes	Site preparation, plant, browse protection, release
Ash 28	Cook	06004221	60	\$78,000	Yes	Black ash stand diversification
Ash 29	Cook	06004228	32	\$41,600	Yes	Black ash stand diversification
Binky NH	Cook	06203224	15	\$3,000	Yes	Site preparation, plant, browse protection, release

Binky 3	Cook	06203223	41	\$8,200	Yes	Site preparation, plant, browse protection, release
Binky 2	Cook	06203223	18	\$3,600	Yes	Site preparation, plant, browse protection, release
Spud 1	Cook	06201127	50	\$10,000	Yes	Site preparation, plant, browse protection, release
Hound 5	Cook	06101211	19	\$3,800	Yes	Site preparation, plant, browse protection, release
Hound 4	Cook	06101210	30	\$6,000	Yes	Site preparation, plant, browse protection, release
Hound 3	Cook	06101210	54	\$10,800	Yes	Site preparation, plant, browse protection, release
Hound 10	Cook	06101215	37	\$7,400	Yes	Site preparation, plant, browse protection, release
Hound 1	Cook	06101210	64	\$12,800	Yes	Site preparation, plant, browse protection, release
Honeymoon 9	Cook	06004202	31	\$6,200	Yes	Site preparation, plant, browse protection, release
Honeymoon 8	Cook	06004202	16	\$3,200	Yes	Site preparation, plant, browse protection, release
Spruce Creek Riparian	Cook	06002209	31	\$2,325	Yes	Gap cutting and diversity planting in riparian buffers
Ash 31	Cook	06004221	49	\$63,700	Yes	Black ash stand diversification
Ash 30	Cook	06004221	30	\$39,000	Yes	Black ash stand diversification
SBW 27	Cook	06303120	39	\$97,500	Yes	Spruce budworm damage treatment
H61 14	Cook	05904229	64	\$12,800	Yes	Site preparation, plant, browse protection, release
H61 11	Cook	05904212	20	\$4,000	Yes	Site preparation, plant, browse protection, release
Pike Lake Non Harvest 1	Cook	06102214	110	\$22,000	Yes	Site preparation, plant, browse protection, release
Pike Lake Non Harvest 2	Cook	06102213	122	\$24,400	Yes	Site preparation, plant, browse protection, release
Vat 2	Cook	06103213	88	\$17,600	Yes	Site preparation, plant, browse protection, release
Vat 1	Cook	06102218	62	\$12,400	Yes	Site preparation, plant, browse protection, release
Banjo RX Burn	Cook	06301202	395	\$59,250	Yes	Prescribed burn
Richey NH	Cook	06005220	8	\$1,600	Yes	Site preparation, plant, browse protection, release
Two Island River Mid SW	Cook	05905221	101	\$7,575	Yes	Gap cutting and diversity planting in riparian buffers
Two Island River Mid NE	Cook	05905221	132	\$9,900	Yes	Gap cutting and diversity planting in riparian buffers
Sawbill Ash North	Cook	06004220	29	\$5,800	Yes	Site preparation, plant, browse protection, release
Two Island River Bend N	Cook	05905228	56	\$4,200	Yes	Gap cutting and diversity planting in riparian buffers
Morris Creek	Cook	05905218	137	\$10,275	Yes	Gap cutting and diversity planting in riparian buffers
Morris 7	Cook	05905231	31	\$6,200	Yes	Site preparation, plant, browse protection, release
Sawbill Ash South	Cook	06004229	10	\$2,000	Yes	Site preparation, plant, browse protection, release
Flute Reed Trib Riparian	Cook	06303135	6	\$450	Yes	Gap cutting and diversity

						planting in riparian buffers
Three Creeks Riparian	Cook	06102202	757	\$56,775	Yes	Gap cutting and diversity planting in riparian buffers
Farley RX	Itasca	14829222	90	\$18,000	Yes	Under-burn
Dinner Creek RX	Itasca	14727203	85	\$17,000	Yes	Under-burn
Ash 24	Itasca	14826235	11	\$14,300	Yes	Black ash stand diversification
Ash 25	Itasca	06026217	17	\$22,100	Yes	Black ash stand diversification
Cutfoot Sioux RX	Itasca	14727201	110	\$22,000	Yes	Under-burn
Big Too Much Lake RX Unit	Itasca	14825214	400	\$80,000	Yes	Under-burn
Ash 26	Itasca	05826219	25	\$32,500	Yes	Black ash stand diversification
Ash 27	Itasca	14925203	17	\$22,100	Yes	Black ash stand diversification
Day Brook WS	Itasca	05923226	19	\$3,800	Yes	Site preparation, plant, browse protection, release
Ash 20	Itasca	14925203	12	\$15,600	Yes	Black ash stand diversification
Ash 7	Itasca	15025233	9	\$11,700	Yes	Black ash stand diversification
Ash 11	Itasca	14625220	15	\$19,500	Yes	Black ash stand diversification
Ash 12	Itasca	14826230	6	\$7,800	Yes	Black ash stand diversification
Ash 19	Itasca	14925223	6	\$7,800	Yes	Black ash stand diversification
Ash 16	Itasca	14925203	10	\$13,000	Yes	Black ash stand diversification
Ash 17	Itasca	14925229	15	\$19,500	Yes	Black ash stand diversification
Ash 6	Itasca	14925229	22	\$28,600	Yes	Black ash stand diversification
Ash 5	Itasca	14827211	15	\$19,500	Yes	Black ash stand diversification
Ash 21	Itasca	15025232	15	\$19,500	Yes	Black ash stand diversification
Ash 2	Itasca	14925202	5	\$6,500	Yes	Black ash stand diversification
Ash 22	Itasca	14725201	13	\$16,900	Yes	Black ash stand diversification
Mississippi UBA RX	Itasca	14629230	500	\$100,000	Yes	Under-burn
Ash 4	Itasca	14925206	16	\$20,800	Yes	Black ash stand diversification
Ash 23	Itasca	14725201	6	\$7,800	Yes	Black ash stand diversification
Ash 3	Itasca	14826214	5	\$6,500	Yes	Black ash stand diversification
Ash 9	Itasca	14625220	14	\$18,200	Yes	Black ash stand diversification
Ash 8	Itasca	14826231	8	\$10,400	Yes	Black ash stand diversification
Ash 1	Itasca	15025232	3	\$3,900	Yes	Black ash stand diversification
Ash 15	Itasca	14825228	34	\$44,200	Yes	Black ash stand diversification
Ash 18	Itasca	14925213	13	\$16,900	Yes	Black ash stand diversification

West Winnie	Itasca	14629227	241	\$48,200	Yes	Under-burn
Ash 14	Itasca	14826217	8	\$10,400	Yes	Black ash stand diversification
Ash 13	Itasca	14825222	4	\$5,200	Yes	Black ash stand diversification
Sunken Lake Rx	Itasca	14727209	454	\$90,800	Yes	Under-burn
Spring Lake RX	Itasca	14825209	350	\$70,000	Yes	Under-burn
Ash 10	Itasca	14825227	17	\$22,100	Yes	Black ash stand diversification
Cowboy 4	Lake	05907204	5	\$1,000	Yes	Site preparation, plant, browse protection, release
Cowboy 2	Lake	05907204	18	\$3,600	Yes	Site preparation, plant, browse protection, release
Cowboy 1	Lake	06007232	46	\$9,200	Yes	Site preparation, plant, browse protection, release
Corridor Aspen	Lake	05608222	82	\$16,400	Yes	Site preparation, plant, browse protection, release
Cedar Creek Lake County	Lake	05608202	59	\$11,800	Yes	Site preparation, plant, browse protection, release
Cat in the Box South	Lake	05807225	65	\$13,000	Yes	Site preparation, plant, browse protection, release
Cascade Falls Riparian	Lake	05607210	350	\$26,250	Yes	Gap cutting and diversity planting in riparian buffers
Bodepher RMZ	Lake	05609211	49	\$9,800	Yes	Site preparation, plant, browse protection, release
Bodepher	Lake	05609211	114	\$22,800	Yes	Site preparation, plant, browse protection, release
Blessner SBW Harvest and Crushing	Lake	05806229	135	\$27,000	Yes	Site preparation, plant, browse protection, release
Big Thirtynine Creek Trib	Lake	05709236	21	\$1,575	Yes	Gap cutting and diversity planting in riparian buffers
Big Maple East	Lake	05807235	110	\$22,000	Yes	Site preparation, plant, browse protection, release
Beaver River West Branch Riparian	Lake	05509210	20	\$1,500	Yes	Gap cutting and diversity planting in riparian buffers
Beaver River RMZ	Lake	05709233	6	\$1,200	Yes	Site preparation, plant, browse protection, release
Bean Lake Riparian	Lake	05608225	11	\$825	Yes	Gap cutting and diversity planting in riparian buffers
Bean Bear Lake Connection	Lake	05608225	27	\$2,025	Yes	Gap cutting and diversity planting in riparian buffers
Baptism River Riparian 2024	Lake	05708212	21	\$1,575	Yes	Gap cutting and diversity planting in riparian buffers
Bandit 5	Lake	06006208	6	\$1,200	Yes	Site preparation, plant, browse protection, release
Balsam Lake Small Riparian	Lake	05807202	1	\$75	Yes	Gap cutting and diversity planting in riparian buffers
Balsam Lake Medium Riparian	Lake	05807202	3	\$225	Yes	Gap cutting and diversity planting in riparian buffers
Balsam Lake Large Riparian	Lake	05807203	12	\$900	Yes	Gap cutting and diversity planting in riparian buffers
Nine Mile 3	Lake	05906215	36	\$7,200	Yes	Site preparation, plant, browse protection, release
Yet Another Baptism Riparian	Lake	05808221	33	\$2,475	Yes	Gap cutting and diversity planting in riparian buffers
Worm 1	Lake	05908205	68	\$13,600	Yes	Site preparation, plant, browse protection, release
Wanless Road DNR SBW Mulching	Lake	06007236	26	\$5,200	Yes	Site preparation, plant,

						browse protection, release
Upland Trail Resto	Lake	05811236	22	\$4,400	Yes	Site preparation, plant, browse protection, release
Two Island River Trust	Lake	05906212	65	\$4,875	Yes	Gap cutting and diversity planting in riparian buffers
Two Island River Lake Co	Lake	05906212	21	\$1,575	Yes	Gap cutting and diversity planting in riparian buffers
Tomcat 9	Lake	06008234	81	\$16,200	Yes	Site preparation, plant, browse protection, release
The Other Bear Lake Riparian	Lake	05608225	21	\$1,575	Yes	Gap cutting and diversity planting in riparian buffers
Swedish Fiddle	Lake	05411234	61	\$12,200	Yes	Site preparation, plant, browse protection, release
Sven Salvage	Lake	05908208	41	\$8,200	Yes	Site preparation, plant, browse protection, release
Stewart River 3	Lake	05310219	10	\$750	Yes	Gap cutting and diversity planting in riparian buffers
Stewart Camp	Lake	05411234	16	\$3,200	Yes	Site preparation, plant, browse protection, release
Starbuck 3	Lake	06009226	14	\$2,800	Yes	Site preparation, plant, browse protection, release
Stand 467	Lake	05808221	9	\$1,800	Yes	Site preparation, plant, browse protection, release
Stand 450	Lake	05808221	15	\$3,000	Yes	Site preparation, plant, browse protection, release
South Jimmer	Lake	05510214	77	\$15,400	Yes	Site preparation, plant, browse protection, release
Sonju South Lakeshore Riparian	Lake	05807227	22	\$1,650	Yes	Gap cutting and diversity planting in riparian buffers
Sonju North Lakeshore Riparian	Lake	05807227	36	\$2,700	Yes	Gap cutting and diversity planting in riparian buffers
Sonju East Lakeshore Riparian	Lake	05807227	7	\$525	Yes	Gap cutting and diversity planting in riparian buffers
Snake T Resto	Lake	05908233	8	\$1,600	Yes	Site preparation, plant, browse protection, release
Silver Creek 3	Lake	05310216	5	\$375	Yes	Gap cutting and diversity planting in riparian buffers
SBW 9	Lake	05710213	39	\$97,500	Yes	Spruce budworm damage treatment
SBW 8	Lake	05710201	39	\$97,500	Yes	Spruce budworm damage treatment
SBW 7	Lake	05710213	39	\$97,500	Yes	Spruce budworm damage treatment
SBW 6	Lake	05710212	39	\$97,500	Yes	Spruce budworm damage treatment
SBW 5	Lake	05710214	39	\$97,500	Yes	Spruce budworm damage treatment
SBW 4	Lake	05710211	39	\$97,500	Yes	Spruce budworm damage treatment
SBW 3	Lake	05710213	39	\$97,500	Yes	Spruce budworm damage treatment
SBW 26	Lake	05810202	40	\$100,000	Yes	Spruce budworm damage treatment
SBW 25	Lake	05910234	40	\$100,000	Yes	Spruce budworm damage treatment
SBW 24	Lake	05810211	38	\$95,000	Yes	Spruce budworm damage treatment
SBW 23	Lake	05709206	40	\$100,000	Yes	Spruce budworm damage

						treatment
SBW 22	Lake	05809219	41	\$102,500	Yes	Spruce budworm damage treatment
SBW 21	Lake	05709218	41	\$102,500	Yes	Spruce budworm damage treatment
SBW 20	Lake	05710201	36	\$90,000	Yes	Spruce budworm damage treatment
Nine Mile 12	Lake	05906215	49	\$9,800	Yes	Site preparation, plant, browse protection, release
Nine Mile 10A	Lake	05906214	4	\$800	Yes	Site preparation, plant, browse protection, release
Nicado 2023	Lake	05608201	57	\$11,400	Yes	Site preparation, plant, browse protection, release
Murphy Point Pine	Lake	05611218	8	\$1,600	Yes	Site preparation, plant, browse protection, release
Murphy Lake RMZ	Lake	05611218	3	\$600	Yes	Site preparation, plant, browse protection, release
Most East East Branch Baptism	Lake	05807229	100	\$7,500	Yes	Gap cutting and diversity planting in riparian buffers
More Tikkanen Creek Riparian	Lake	05707208	18	\$1,350	Yes	Gap cutting and diversity planting in riparian buffers
More Lindstrom Creek	Lake	05708225	101	\$7,575	Yes	Gap cutting and diversity planting in riparian buffers
More Cedar Creek Riparian	Lake	05608223	13	\$975	Yes	Gap cutting and diversity planting in riparian buffers
Manitou River South Branch	Lake	05807207	84	\$6,300	Yes	Gap cutting and diversity planting in riparian buffers
Manitou Rd Stand 25	Lake	05907216	11	\$2,200	Yes	Site preparation, plant, browse protection, release
Lower Bean Lake Riparian	Lake	05608225	24	\$1,800	Yes	Gap cutting and diversity planting in riparian buffers
Little Marais Rd	Lake	05707216	10	\$2,000	Yes	Site preparation, plant, browse protection, release
Lindstrom Creek Small Riparian	Lake	05707232	14	\$1,050	Yes	Gap cutting and diversity planting in riparian buffers
Lift (T-18)	Lake	05907206	58	\$11,600	Yes	Site preparation, plant, browse protection, release
Leskinen Creek Tiny	Lake	05707215	21	\$1,575	Yes	Gap cutting and diversity planting in riparian buffers
Leskinen Creek Again	Lake	05707222	65	\$4,875	Yes	Gap cutting and diversity planting in riparian buffers
Lake Twentythree Trust Land	Lake	05807223	1	\$75	Yes	Gap cutting and diversity planting in riparian buffers
Lake Twentythree Riparian	Lake	05807223	21	\$1,575	Yes	Gap cutting and diversity planting in riparian buffers
Knife River South Slopes	Lake	05211218	9	\$1,800	Yes	Site preparation, plant, browse protection, release
Knife River Balsam South	Lake	05211218	22	\$4,400	Yes	Site preparation, plant, browse protection, release
Knife River Balsam North	Lake	05211208	23	\$4,600	Yes	Site preparation, plant, browse protection, release
Junction Creek East	Lake	05807209	24	\$1,800	Yes	Gap cutting and diversity planting in riparian buffers
Joe's Minnows	Lake	06010232	34	\$6,800	Yes	Site preparation, plant, browse protection, release
Hut 2 hardwood 2	Lake	05707205	59	\$11,800	Yes	Site preparation, plant, browse protection, release
Hollywood Hardwoods	Lake	05707207	50	\$10,000	Yes	Site preparation, plant,

						browse protection, release
Hockamin Creek SBW Mulching	Lake	05708226	25	\$5,000	Yes	Site preparation, plant, browse protection, release
Hen Creek Riparian	Lake	05709223	34	\$2,550	Yes	Gap cutting and diversity planting in riparian buffers
Heffelfinger North	Lake	05808231	13	\$2,600	Yes	Site preparation, plant, browse protection, release
H61 9	Lake	05706203	36	\$7,200	Yes	Site preparation, plant, browse protection, release
H61 7	Lake	05806236	40	\$8,000	Yes	Site preparation, plant, browse protection, release
H61 4	Lake	05706203	38	\$7,600	Yes	Site preparation, plant, browse protection, release
H61 26	Lake	05508228	25	\$5,000	Yes	Site preparation, plant, browse protection, release
H61 25	Lake	05508228	16	\$3,200	Yes	Site preparation, plant, browse protection, release
H61 24	Lake	05706230	39	\$7,800	Yes	Site preparation, plant, browse protection, release
H61 23	Lake	05706219	39	\$7,800	Yes	Site preparation, plant, browse protection, release
H61 22	Lake	05607211	41	\$8,200	Yes	Site preparation, plant, browse protection, release
H61 21	Lake	05707236	39	\$7,800	Yes	Site preparation, plant, browse protection, release
H61 20	Lake	05409222	40	\$8,000	Yes	Site preparation, plant, browse protection, release
H61 2	Lake	05706230	39	\$7,800	Yes	Site preparation, plant, browse protection, release
H61 19	Lake	05409222	39	\$7,800	Yes	Site preparation, plant, browse protection, release
H61 17	Lake	05607215	39	\$7,800	Yes	Site preparation, plant, browse protection, release
H61 16	Lake	05409222	40	\$8,000	Yes	Site preparation, plant, browse protection, release
H61 15	Lake	05707236	37	\$7,400	Yes	Site preparation, plant, browse protection, release
H61 13	Lake	05409228	38	\$7,600	Yes	Site preparation, plant, browse protection, release
H61 12	Lake	05607215	39	\$7,800	Yes	Site preparation, plant, browse protection, release
H61 10	Lake	05607201	38	\$7,600	Yes	Site preparation, plant, browse protection, release
H61 1	Lake	05806236	39	\$7,800	Yes	Site preparation, plant, browse protection, release
Greenwood T-36	Lake	05910212	3	\$600	Yes	Site preparation, plant, browse protection, release
Greenwood T-35	Lake	05910212	1	\$200	Yes	Site preparation, plant, browse protection, release
Greenwood T-32	Lake	05910201	3	\$600	Yes	Site preparation, plant, browse protection, release
Greenwood T-31	Lake	05910201	20	\$4,000	Yes	Site preparation, plant, browse protection, release
Greenwood T-27	Lake	06009231	30	\$6,000	Yes	Site preparation, plant, browse protection, release
Greenwood T-23	Lake	06009231	8	\$1,600	Yes	Site preparation, plant, browse protection, release
Greenwood T-21	Lake	05910201	22	\$4,400	Yes	Site preparation, plant,

						browse protection, release
Greenwood T-04 Shiny Leaf	Lake	05910212	22	\$4,400	Yes	Site preparation, plant, browse protection, release
Golden Beaver South	Lake	05609201	63	\$12,600	Yes	Site preparation, plant, browse protection, release
Golden Beaver North	Lake	05709236	73	\$14,600	Yes	Site preparation, plant, browse protection, release
GFR - Greenwood River JP&RP	Lake	05910204	29	\$5,800	Yes	Site preparation, plant, browse protection, release
GFR - Greenwood River BS&JP	Lake	05910204	10	\$2,000	Yes	Site preparation, plant, browse protection, release
Fry 4	Lake	06009225	100	\$20,000	Yes	Site preparation, plant, browse protection, release
FR 11 Aspen	Lake	05711226	24	\$4,800	Yes	Site preparation, plant, browse protection, release
Even More Lindstrom Creek	Lake	05707230	27	\$2,025	Yes	Gap cutting and diversity planting in riparian buffers
Elephant 9	Lake	06107233	9	\$1,800	Yes	Site preparation, plant, browse protection, release
Ekbeck Creek Riparian	Lake	05708207	50	\$3,750	Yes	Gap cutting and diversity planting in riparian buffers
Ekbeck Beaver River Confluence	Lake	05708219	104	\$7,800	Yes	Gap cutting and diversity planting in riparian buffers
Egge Lake West Shore Riparian	Lake	05707204	28	\$2,100	Yes	Gap cutting and diversity planting in riparian buffers
Egge Lake North Shore Riparian	Lake	05807233	8	\$600	Yes	Gap cutting and diversity planting in riparian buffers
Egge Lake East Shore Riparian	Lake	05707204	11	\$825	Yes	Gap cutting and diversity planting in riparian buffers
Egge Creek Pond Riparian	Lake	05807233	21	\$1,575	Yes	Gap cutting and diversity planting in riparian buffers
Egge Creek Lake Co	Lake	05707203	171	\$12,825	Yes	Gap cutting and diversity planting in riparian buffers
Earl West N	Lake	05807213	16	\$3,200	Yes	Site preparation, plant, browse protection, release
Doyle Lake Rd Riparian	Lake	05708201	17	\$1,275	Yes	Gap cutting and diversity planting in riparian buffers
DNR FR11	Lake	05711226	14	\$2,800	Yes	Site preparation, plant, browse protection, release
Creek with no Name	Lake	05807220	26	\$1,950	Yes	Gap cutting and diversity planting in riparian buffers
Creek Between Lakes Riparian	Lake	05807223	18	\$1,350	Yes	Gap cutting and diversity planting in riparian buffers
Cramer Homestead Lake Riparian	Lake	05807223	13	\$975	Yes	Gap cutting and diversity planting in riparian buffers
Another Ninemile Creek Riparian	Lake	05906227	48	\$3,600	Yes	Gap cutting and diversity planting in riparian buffers
Airbase Site 2	Lake	05707205	22	\$4,400	Yes	Site preparation, plant, browse protection, release
Airbase Site 1	Lake	05707205	36	\$7,200	Yes	Site preparation, plant, browse protection, release
55-10-13	Lake	05510213	71	\$14,200	Yes	Site preparation, plant, browse protection, release
SBW 19	Lake	05709219	41	\$102,500	Yes	Spruce budworm damage treatment
SBW 18	Lake	05710201	39	\$97,500	Yes	Spruce budworm damage treatment
SBW 17	Lake	05709218	39	\$97,500	Yes	Spruce budworm damage

						treatment
SBW 16	Lake	05709218	40	\$100,000	Yes	Spruce budworm damage treatment
SBW 15	Lake	05709207	40	\$100,000	Yes	Spruce budworm damage treatment
SBW 14	Lake	05709207	40	\$100,000	Yes	Spruce budworm damage treatment
SBW 13	Lake	05710224	39	\$97,500	Yes	Spruce budworm damage treatment
SBW 12	Lake	05709218	40	\$100,000	Yes	Spruce budworm damage treatment
SBW 11	Lake	05709205	40	\$100,000	Yes	Spruce budworm damage treatment
SBW 10	Lake	05709219	39	\$97,500	Yes	Spruce budworm damage treatment
SBW 1	Lake	05711226	36	\$90,000	Yes	Spruce budworm damage treatment
Sawmill Creek North	Lake	05707213	52	\$3,900	Yes	Gap cutting and diversity planting in riparian buffers
Random Pond Riparian	Lake	05607230	25	\$1,875	Yes	Gap cutting and diversity planting in riparian buffers
Rabbit Hutch HW	Lake	05311208	75	\$15,000	Yes	Site preparation, plant, browse protection, release
Rabbit Hutch Aspen	Lake	05311208	76	\$15,200	Yes	Site preparation, plant, browse protection, release
Pine Creek 3.0	Lake	05511219	117	\$23,400	Yes	Site preparation, plant, browse protection, release
Penn Creek Riparian	Lake	05608225	55	\$4,125	Yes	Gap cutting and diversity planting in riparian buffers
Palisade Creek Trib	Lake	05607217	79	\$5,925	Yes	Gap cutting and diversity planting in riparian buffers
Oliver Creek Riparian	Lake	05707206	20	\$1,500	Yes	Gap cutting and diversity planting in riparian buffers
Ole Salvage 2	Lake	05908205	36	\$7,200	Yes	Site preparation, plant, browse protection, release
North McDougal Planting	Lake	06010236	42	\$8,400	Yes	Site preparation, plant, browse protection, release
Ninemile Creek 9	Lake	05906233	37	\$2,775	Yes	Gap cutting and diversity planting in riparian buffers
Nine Mile 9	Lake	05906211	7	\$1,400	Yes	Site preparation, plant, browse protection, release
Nine Mile 7	Lake	05906222	4	\$800	Yes	Site preparation, plant, browse protection, release
Nine Mile 4A	Lake	05906214	7	\$1,400	Yes	Site preparation, plant, browse protection, release
Nine Mile 4	Lake	05906214	48	\$9,600	Yes	Site preparation, plant, browse protection, release
Pile of Jack Pine	St. Louis	06116201	19	\$3,800	Yes	Site preparation, plant, browse protection, release
Little Pauline RX Burn	St. Louis	06516201	595	\$89,250	Yes	Prescribed burn for oak blueberry habitat restoration
1005 RX Burn	St. Louis	06617235	109	\$16,350	Yes	Prescribed burn for oak blueberry habitat restoration
1007 RX Burn	St. Louis	06616232	511	\$76,650	Yes	Prescribed burn for oak blueberry habitat restoration

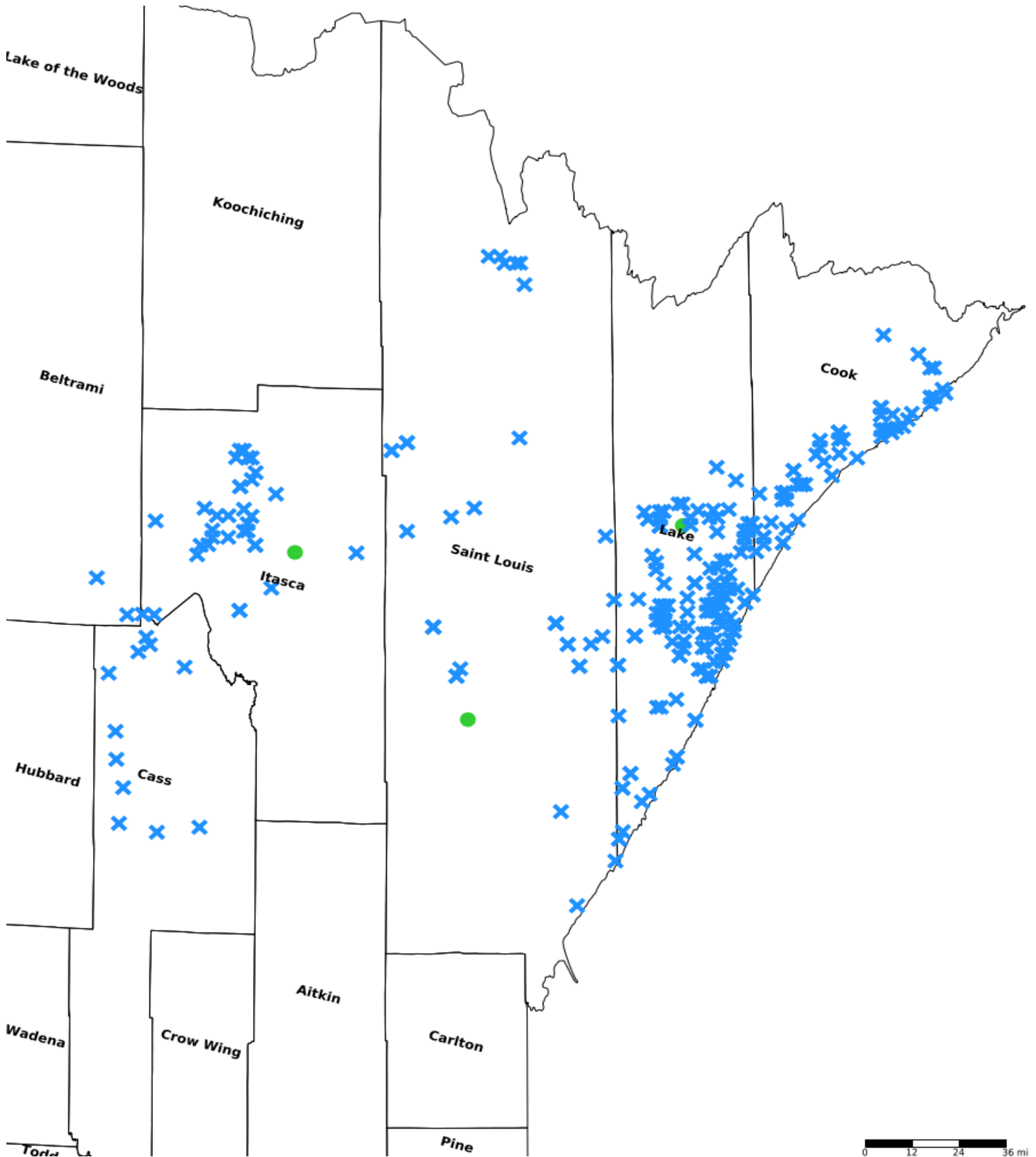
Nigh Creek RX Burn	St. Louis	06515220	165	\$24,750	Yes	Prescribed burn for oak blueberry habitat restoration
Blueberry Hill 1	St. Louis	06121216	14	\$2,800	Yes	Site preparation, plant, browse protection, release
Blueberry Hill 2	St. Louis	06121216	2	\$400	Yes	Site preparation, plant, browse protection, release
Dempsey Creek 164	St. Louis	05719218	21	\$4,200	Yes	Site preparation, plant, browse protection, release
Dempsey Creek 174	St. Louis	05719218	10	\$2,000	Yes	Site preparation, plant, browse protection, release
Dempsey Creek 197	St. Louis	05719218	17	\$3,400	Yes	Site preparation, plant, browse protection, release
Dempsey Creek 213	St. Louis	05719218	10	\$2,000	Yes	Site preparation, plant, browse protection, release
Fairbanks 250	St. Louis	05713236	21	\$4,200	Yes	Site preparation, plant, browse protection, release
Jawbone 1	St. Louis	05714216	35	\$7,000	Yes	Site preparation, plant, browse protection, release
Jawbone 2	St. Louis	05714216	30	\$6,000	Yes	Site preparation, plant, browse protection, release
Jawbone 3	St. Louis	05714216	15	\$3,000	Yes	Site preparation, plant, browse protection, release
K21-531427 (Scholastica)	St. Louis	05314227	11	\$2,200	Yes	Site preparation, plant, browse protection, release
Knife River WP Restoration	St. Louis	05212236	39	\$7,800	Yes	Site preparation, plant, browse protection, release
Luster PU 11	St. Louis	05912215	123	\$24,600	Yes	Site preparation, plant, browse protection, release
Murray Road 653	St. Louis	06120207	10	\$2,000	Yes	Site preparation, plant, browse protection, release
Murray Road 808	St. Louis	06120207	1	\$200	Yes	Site preparation, plant, browse protection, release
Shiver Creek NE 1	St. Louis	05714236	22	\$4,400	Yes	Site preparation, plant, browse protection, release
Shiver Creek NE 2	St. Louis	05714236	8	\$1,600	Yes	Site preparation, plant, browse protection, release
Shoepack Spruce (Stand_814)	St. Louis	05921212	24	\$4,800	Yes	Site preparation, plant, browse protection, release
St. Louis River East 303	St. Louis	05618219	6	\$1,200	Yes	Site preparation, plant, browse protection, release
St. Louis River East 306	St. Louis	05618219	18	\$3,600	Yes	Site preparation, plant, browse protection, release
St. Louis River East 311	St. Louis	05618217	16	\$3,200	Yes	Site preparation, plant, browse protection, release
1006 RX Burn	St. Louis	06516204	421	\$63,150	Yes	Prescribed burn for oak blueberry habitat restoration
West Jeanette	St. Louis	06515206	400	\$60,000	Yes	Prescribed burn for oak blueberry habitat restoration
Amity Tract 2	St. Louis	05113232	40	\$8,000	Yes	Site preparation, plant, browse protection, release
Push and Glide	St. Louis	06018225	58	\$8,700	Yes	Prescribed burn
Osborn Road Central	St. Louis	06019236	17	\$3,400	Yes	Site preparation, plant, browse protection, release
Pine Lake	St. Louis	05812236	300	\$60,000	Yes	Site preparation, plant, browse protection, release

4 Day 116	St. Louis	05613216	6	\$1,200	Yes	Site preparation, plant, browse protection, release
4 Day 113	St. Louis	05613216	6	\$1,200	Yes	Site preparation, plant, browse protection, release
SBW 2	St. Louis	05712228	41	\$102,500	Yes	Spruce budworm damage treatment

Protect Parcels

Name	County	TRDS	Acres	Est Cost	Existing Protection
NA	Itasca	05925230	99	\$1,000	No
NA	Lake	05909212	99	\$1,000	No
NA	St. Louis	05518222	99	\$1,000	No

Parcel Map



- Protect in Easement
- ▲ Protect in Fee with PILT
- Protect in Fee W/O PILT
- ★ Restore
- ✕ Enhance
- ⊕ Other

THE MINNESOTA FOREST RECOVERY PROJECT – PHASE III



Strengthening Partnerships to Enhance and Protect Forests for Wildlife & Resilience

THE NEED

Northern Minnesota's forests face unprecedented challenges that must be addressed now in order to maintain benefits for fish, wildlife, climate, and people. Emerald Ash Borer and spruce budworm outbreaks **threaten more than 1.7 million acres**. Excessive woody fuels increase the risk of massive wildfires. A changing climate exacerbates these threats and calls for management actions that increase forest resilience. Development pressures continue to fragment important wildlife habitats.



This project benefits a wide variety of species that rely upon healthy, connected, functioning forests, including (above, from left to right) brook trout, bald eagle, four-toed salamander, lynx, evening grosbeak, moose, and spruce grouse. Brook trout benefit from forest-shaded cold-water streams, which are particularly threatened by spruce budworm-related die off of riparian balsam fir and spruce.

PHASE I AND PHASE II SUCCESS

- Through completion of Phase I, and Phase II accomplishments to date, we have **enhanced over 12,000 acres** through the MN Forest Recovery Project. This project is a key part of TNC's broader work across MN's Northwoods leveraging additional funds and catalyzing other partner investments.
- Beyond OHF funds, TNC has **managed an additional 49,000 acres of forest enhancement**, demonstrating our capacity and commitment to work at a meaningful scale across the landscape.
- Phase I and II funding supported the expansion of **partnerships and collaboration** between organizations and agencies working in northern Minnesota's forests, allowing for increased pace and scale of forest enhancement work across the region.

PHASE III GOALS: EXPANSION & MAINTENANCE

The main goals of the project are to:

- Enhance: **21,000 acres of degraded and vulnerable forests** in priority locations in northern Minnesota through practices that increase forest resilience and reduce excessive fuels.
- Protect : **1,600 acres of forests** through conservation easements in key locations to conserve habitat and critical corridors in northern Minnesota.



Spruce budworm has affected nearly 700,000 acres of forestland in northern Minnesota over the past few years, resulting in large-scale die off of balsam fir and spruce (center). TNC works with guest worker crews to haul (right) and plant tree seedlings to increase forest diversity at planting sites across northern Minnesota, including in the scar of the 2021 Greenwood Fire (left).

DETAILS: ENHANCEMENT

We aim to enhance forest resilience by improving tree species diversity and the balance of forest ages and tree densities, projects designed to give the Northwoods the best chance to persist through the uncertainty of present and impending challenges. Enhancement Treatments and Strategies include:

- Improvement of **riparian corridor habitat** and connectivity along streams, rivers, and undeveloped lakeshores.
- Treating forests impacted by **spruce budworm** to make forests less vulnerable to future threats and reduce risk to habitat and communities from wildfires.
- Operationalizing and scaling up multi-partner efforts to preemptively diversify our ash forests as **Emerald Ash Borer** pushes farther northward.
- Restoring forests and habitat along the **Hwy 61 Lake Superior corridor** to showcase our generation's investment in and stewardship of natural communities.
- **Site preparation** using mechanical equipment, hand crews, and related means to support tree planting or natural regeneration objectives.
- **Tree planting and tending** of planted trees to enhance survival, including browse protection, tree release, and blister rust pruning.
- Prescribed burning, establishment of burn breaks, and fuels treatments to **enable prescribed fire**.

DETAILS: PROTECTION

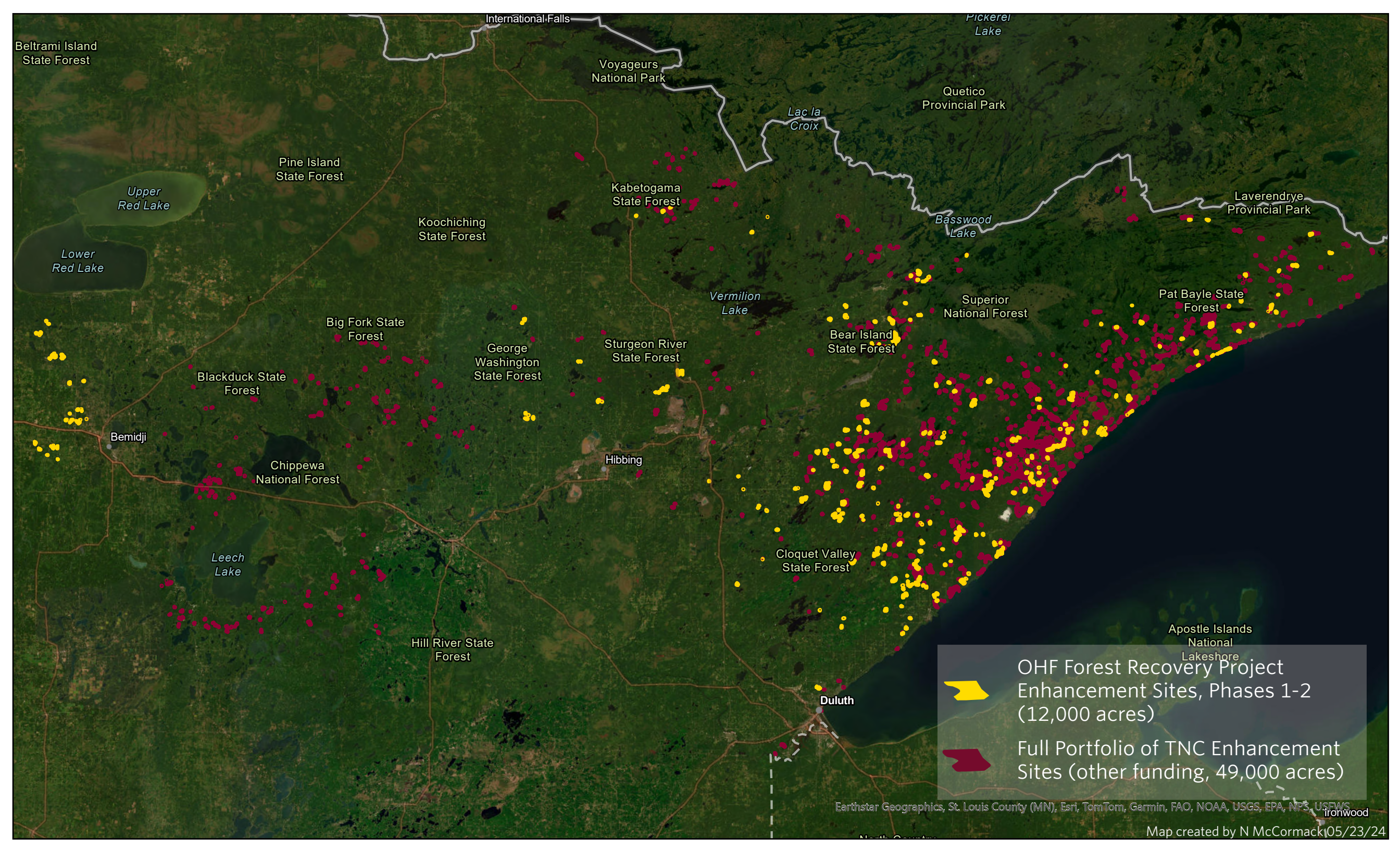
We will acquire conservation easements to fill protection gaps within large expanses of conserved forest in northern Minnesota. Forest Protection activities will:

- Focus on the largest and most important gaps in the **Resilient and Connected Lands Network**.
- Conserve areas identified by the **Minnesota Biological Survey**.
- **Avoid forest fragmentation** and the costly extension of services to remote areas.
- Keep private lands on the tax rolls.

Minnesota Forest Recovery Project Partners



Forest Recovery Project Phase III; ML 2025 Request for Funding. Contact Jim Manolis, The Nature Conservancy, 612-331-0796



Beltrami Island State Forest

Upper Red Lake
Lower Red Lake

Pine Island State Forest

Koochiching State Forest

Voyageurs National Park

Kabetogama State Forest

Lac la Croix

Quetico Provincial Park

Basswood Lake

Laverendrye Provincial Park

Big Fork State Forest

Blackduck State Forest

George Washington State Forest

Sturgeon River State Forest

Vermilion Lake

Bear Island State Forest

Superior National Forest

Pat Bayle State Forest

Bemidji

Chippewa National Forest

Hibbing

Leech Lake

Cloquet Valley State Forest

Hill River State Forest

Duluth

Apostle Islands National Lakeshore

OHF Forest Recovery Project Enhancement Sites, Phases 1-2 (12,000 acres)

Full Portfolio of TNC Enhancement Sites (other funding, 49,000 acres)