



## Lessard-Sams Outdoor Heritage Council

Cannon River Watershed Habitat Protection and Restoration Program - Phase 14  
ML 2025 Request for Funding

---

### General Information

**Date:** 05/28/2024

**Proposal Title:** Cannon River Watershed Habitat Protection and Restoration Program - Phase 14

**Funds Requested:** \$10,954,200

**Confirmed Leverage Funds:** \$87,200

**Is this proposal Scalable?:** Yes

### Manager Information

**Manager's Name:** Jennifer Tonko

**Title:** Executive Director

**Organization:** Clean River Partners

**Address:** 205 Water Street S Suite 1

**City:** Northfield, MN 55057

**Email:** jennifer@cleanriverpartners.org

**Office Number:** 507-786-3913

**Mobile Number:**

**Fax Number:**

**Website:** <https://cleanriverpartners.org/>

### Location Information

**County Location(s):** Rice, Goodhue, Waseca, Le Sueur and Steele.

**Eco regions in which work will take place:**

- Prairie
- Southeast Forest

**Activity types:**

- Protect in Fee
- Restore
- Enhance

**Priority resources addressed by activity:**

- Wetlands
- Prairie
- Forest
- Habitat

**Narrative****Abstract**

The Cannon River Watershed Habitat Protection and Restoration Program will protect approximately 580 acres in fee; restore or enhance approximately 285 acres of high-priority wildlife habitat within the Cannon River Watershed, including wetlands, prairies, forests, and river/shallow lake shoreline; and restore and rewild an eroded and impacted section of the Little Cannon River, a designated trout stream. This program's goal is to protect existing high-quality habitat, restore degraded habitat, prevent water quality degradation, and provide public access.

**Design and Scope of Work**

The Cannon River Watershed Habitat Protection and Restoration Program - Phase 14 continues to protect, create, and restore publicly accessible, high-quality habitat lands throughout the Cannon River Watershed, increasing restored habitat on public lands available for hunting, angling, and other recreation within an hour's drive for over half of Minnesota's population.

Located south of the Twin Cities, the 1,460 square mile Cannon River Watershed includes over 800 linear miles of streams and rivers that drain a diverse landscape. This area supports numerous habitats, including prairie, oak savanna, and Big Woods, though the watershed is now dominated by agricultural fields and, to a lesser extent, urban development. Agricultural practices and shoreline development are the major contributors to the impaired status of stretches of the Cannon River and its associated lakes and streams.

This multi-year, multi-partner program protects and restores targeted parcels of land that positively contribute to large complexes of forests, restored prairies, wetlands, lakeshore, and river shoreline. A major focus of Phase 14 will be the trout stream restoration and floodplain reconnection in and immediately adjacent to the Little Cannon River AMA, previously acquired with OHF funds.

Clean River Partners (CRP) is the local expert in the watershed, connecting with landowners, land managers, hunters, fishers, and others since 1990. CRP will coordinate this program, providing program administration and landowner outreach.

Trust for Public Land (TPL) will target large wetland/upland complexes, rare biomes (prairie, oak savanna, and Big Woods forest), shallow lakes, river shoreline, and lands adjacent to existing public land for fee-title acquisition. TPL will convey lands to the DNR except when local governmental unit ownership is appropriate.

Great River Greening (GRG) will evaluate parcels targeted for enhancement in collaboration with MN DNR, County, SWCD, and USFWS personnel to determine existing and desired conditions. Site-specific work plans and project management plans will detail the methods, practices, and timeline for the successful completion of each site.

In this phase, the partners are eager to build on past LSOHC-funded accomplishments. Building off TPL's 2020 acquisition that became the Little Cannon River AMA, GRG would restore the Little Cannon River channel and

increase the floodplain to improve water storage. This two-fold restoration project, raising the incised channel to the current floodplain level and excavating and widening the current floodplain to current bankfull elevation, will restore the river to its meandering wild form. These conditions decrease erosion and improve fish habitat, while increasing public fishing access to 12,000 linear feet. This restoration would complement other conservation efforts in the area, (funded through a Fishers and Farmers Partnership grant, pending federal appropriation in early 2025) including expanding the public access to fishing upriver from the AMA through conservation easements and financial incentives to farmers to implement managed grazing, cover crops, and reduced tillage on lands that contribute significant sediment loading into the river. This holistic approach to restoring a high-priority stream is possible because of the consistency and effectiveness of our past efforts, primarily funded through the OHF.

### **Explain how the proposal addresses habitat protection, restoration, and/or enhancement for fish, game & wildlife, including threatened or endangered species conservation**

The areas targeted by TPL have been identified and prioritized through state, regional, and local natural resource plans due to their high biodiversity qualities and connectivity to existing public lands. Protection will occur through fee title acquisition and will target Big Woods, oak savannas, wetlands, and sensitive shoreline communities within the Cannon River Watershed. GRG will conduct significant habitat restoration and enhancement work on protected conservation lands identified by DNR and County staff within the watershed. The aim is to improve habitat values for wildlife and Species in Greatest Conservation Need (SGCN), including birds using the Mississippi River migratory corridor and pollinators. Work will restore and enhance riverine, forest, wetland, oak savanna, and prairie habitat at 6 conservation sites.

Protection, restoration and/or enhancement of these significant parcels will provide critical habitat for game species, including upland birds (dove, turkey, pheasant, and woodcock), white-tailed deer, migratory waterfowl (mallard, canvasback, wood duck, hooded merganser, pintail, and lesser scaup), and aquatic species (trout, northern pike, black crappie, bluegill, and walleye). Protection will also provide access to diverse recreational experiences including duck, pheasant, turkey, and deer hunting as well as river, stream, and lake fishing. Nongame wildlife, including SGCN, that also benefit from this effort includes bald eagle, Bell's vireo, cerulean warbler, loggerhead shrike, Sandhill crane, red-headed woodpecker, greater yellowlegs, buffbreasted sandpiper, rusty patched bumble bee, Blanding's turtle, wood turtle, mudpuppies, and the giant floater, a species of freshwater mussel.

There are potentially 4 federally threatened or endangered species in the area affected by the Little Cannon River that could benefit from our restoration efforts: Northern Long-eared Bat, rusty patched bumble bee, Minnesota dwarf trout lily, and prairie bush clover as well as the MN DNR target species, the red-sided dace.

### **What are the elements of this proposal that are critical from a timing perspective?**

Funding the Little Cannon River restoration now maximally leverages the dollars invested by the Fishers and Farmers Partnership, enabling the partners to act on restoration efforts quickly once easements are in place. It is also important for the Council to support outreach, protection, and restoration efforts because larger coordinated projects like the Little Cannon River restoration are only possible when landowner interest, LGU capacity, and an appreciation of habitat benefits and use converge. Additionally, only 18% of the landscape in the Cannon River Watershed remains as forest, wetland, or prairie habitat and many of these areas have been degraded by invasive species. Protection, restoration, and enhancement of the region's unimpaired waters and increasingly vital habitat are critically important before they become further degraded by invasive species or by residential development and agricultural pressures. Failing to protect, restore, or enhance these habitats now will result in increased costs in the future.

## **Describe how the proposal expands habitat corridors or complexes and/or addresses habitat fragmentation:**

This program uses information from the Wildlife Action Network, Minnesota County Biological Survey, and several analysis tools to identify priority lands for protection and restoration creating and expanding conservation corridors and habitat complexes. In addition, we will consult several watershed-wide landscape planning efforts such as the Cannon River Watershed Landscape Stewardship Plan, the Cannon River Watershed - Watershed Restoration and Protection Strategies (WRAPS), and the Cannon River Watershed Comprehensive Management Plan approved by Minnesota's Board of Water and Soil Resources and ratified by the Cannon River Watershed Joint Powers Board.

## **Which top 2 Conservation Plans referenced in MS97A.056, subd. 3a are most applicable to this project?**

- Minnesota's Wildlife Action Plan 2015-2025
- Outdoor Heritage Fund: A 25 Year Framework

## **Explain how this proposal will uniquely address habitat resilience to climate change and its anticipated effects on game, fish & wildlife species utilizing the protected or restored/enhanced habitat this proposal targets.**

This program protects and enhances lands that provide the best opportunities for maintaining biodiversity and increasing connectivity, the foundations of a resilient landscape. Enhancement activities prioritize climate resiliency by sourcing seed, plugs, and seedlings with preference to southern Minnesota. This program integrates protection and restoration at a watershed scale, supporting landscape resiliency by protecting and buffering large areas and increasing connections that facilitate species movement and adaptation to stressors, including those accelerated by climate change. Increased connectivity and biodiversity at this large scale ensure parcels of habitat suitable for sustaining wildlife across the life cycle. Coordination by this partnership at a watershed level facilitates the alignment of shared goals and leverages conservation efforts, maximizing impacts and realizing efficiencies to benefit resiliency. GRG will also continue to utilize its biochar kilns to dispose of woody debris on applicable sites to reduce carbon dioxide release and burn scar creation from brush piles.

## **Which LSOHC section priorities are addressed in this proposal?**

### **Prairie**

- Protect, enhance, or restore existing wetland/upland complexes, or convert agricultural lands to new wetland/upland habitat complexes

### **Southeast Forest**

- Protect, enhance, and restore habitat for fish, game, and nongame wildlife in rivers, cold-water streams, and associated upland habitat

## **Describe how this project/program will produce and demonstrate a significant and permanent conservation legacy and/or outcomes for fish, game, and wildlife, and if not permanent outcomes, why it is important to undertake at this time:**

In Phase 14, this program will restore and rewild the Little Cannon River section of the Little Cannon River AMA. As heavy rainfall events continue to increase, stabilizing the river channel will prevent sediment loading into this cold water trout stream where the redbreast dace, a species of greatest concern, also resides. Rewilding the flow of

the river channel will stabilize the river and protect the cold-water springs that feed into the river, assisting with temperature regulation to help these cooler-water species thrive. Our program, through land protection and restoration, prevents degradation and loss of quality habitat in the Prairie and Southeast Forest section of Minnesota, specifically the Cannon River Watershed. This work improves and increases the amount of available public lands for hunting and angling opportunities within an hour's drive for over half of the State's population and will lead to larger complexes of restored prairies, oak savannas, wetlands, lakeshore, and river shoreline.

To date, this multi-year program has permanently protected 3,110 acres and restored or enhanced 498 acres in the Cannon River Watershed utilizing Outdoor Heritage Funds (452 acres of restoration are underway). According to a spatial driveshed analysis conducted by TPL, over 3.4 million people live within an hour's drive of the lands protected through the Cannon River Watershed program. Ongoing outreach to landowners and public agencies indicates significant continued interest in permanently protecting and restoring more land with high biological significance in this valuable watershed.

## Outcomes

### Programs in prairie region:

- Key core parcels are protected for fish, game and other wildlife ~ *Core parcels are identified in partnership with the DNR, counties, and the partners of the Cannon River Watershed Habitat Protection and Restoration Program. Success will be determined based on the acreage of lands protected, restored, and enhanced and the percentage of protected lands in the watershed.*

### Programs in southeast forest region:

- High priority riparian lands, forestlands, and savannas are protected from parcelization and fragmentation ~ *Core parcels are identified in partnership with the DNR as well as the partners of the Cannon River Watershed Habitat Protection and Restoration Program. Success will be determined based on the acreage of lands protected, restored, and enhanced and the percentage of protected lands in the watershed.*

### What other dedicated funds may collaborate with or contribute to this proposal?

- Other
- Clean Water Fund
- Arts and Cultural Heritage Fund

### Per MS 97A.056, Subd. 24, Please explain whether the request is supplanting or is a substitution for any previous funding that was not from a legacy fund and was used for the same purpose.

This proposal does not substitute or supplant previous funding that was not from a Legacy fund.

### How will you sustain and/or maintain this work after the Outdoor Heritage Funds are expended?

Once land has been acquired and conveyed to the DNR, initial site development and restoration of these lands will begin. Estimated costs for initial restoration or enhancement work are included in this proposal. TPL will work with DNR to complete a restoration or enhancement management plan, and implementation of that plan will be completed in the following years. These properties will be managed and maintained by the DNR according to their guidelines.

In collaboration with DNR, County, and USFWS personnel, parcels targeted for restoration will be evaluated by GRG to determine existing and desired conditions for each site. Information gathered will be used to develop site-

specific scope of work plans for restoring ecologically desired habitats. Project management plans will detail the methods and practices to be used and a timeline for the successful completion of each site/project and maintenance in the future. After funds are expended, sites will be in a condition that the landowner will be able to maintain.

**Actions to Maintain Project Outcomes**

Year	Source of Funds	Step 1	Step 2	Step 3
2026	TPL - DNR	Develop restoration/management plan for property	Restore and steward property for habitat and public recreation	-
2027	TPL - DNR	Restore and steward property for habitat and public recreation	-	-
2028	TPL - OHF and DNR	Post property	Develop restoration/management plan for property	-
2026	GRG - OHF	Perform site evaluation and assessment in collaboration with DNR	Develop R/E plan for property. Begin monitoring	Initiate site preparation from R/E work. Continue monitoring
2027	GRG - OHF	Initiate R/E work	Continue R/E depending on appropriate methods and time of year	Continue R/E and begin stewardship as needed using appropriate methods and dependent on time of year
2028	GRG - OHF	Continue R/E and begin stewardship. Target actions to maintain habitat.	Restorative action to correct damage as needed	Evaluate progress and determine if additional actions are needed

**Provide an assessment of how your program may celebrate cultural diversity or reach diverse communities in Minnesota, including reaching low- and moderate-income households:**

This program involves, engages, and benefits BIPOC and diverse communities through focused events that leverage Outdoor Heritage Funds. For example, recent efforts, funded through other sources, have focused on increasing the engagement of BIPOC and diverse communities across the watershed in volunteer events at sites protected and restored using past OHF appropriations. Additionally, also through different funding sources, some of this program’s recent acquisition and restoration projects focus on protection of the environment and water quality while creating much-needed recreational opportunities targeting disadvantaged areas (based upon housing, income and wastewater thresholds) with significant BIPOC communities. Our partners actively encourage residents who live near habitat restoration sites and create programs specifically for people from diverse backgrounds opening up opportunities to pursue environmental careers such as GRG's Future Stewards Program.

Protecting, restoring, and enhancing diverse and resilient habitat benefits all Minnesotans. It keeps our air and water cleaner, mitigates the impacts of climate change, and conserves the biological diversity that belongs to everyone. Public land provides an opportunity for recreation and health to those who do not have access to private natural lands, whether that be for hunting, fishing, hiking, or other outdoor pursuits.

TPL’s mentored hunting and angling program is a great example of this. In partnership with the MN Chapter of Backcountry Hunters and Anglers, TPL is hosting and facilitating mentored hunts and angling opportunities for diverse communities on public lands and waters across MN with a focus on ones protected with Outdoor Heritage Funds. Our target audience for mentees are diverse and historically marginalized communities, with a particular

outreach focus on BIPOC communities. Our program mentors are individuals from diverse ethnic and racial backgrounds as well, helping to reinforce and foster a sense of representation, belonging, and inclusion in outdoor spaces.

Moving forward, we will continue our outreach to BIPOC communities and remain eager to expand this important work in a way that more directly, and authentically, engages diverse communities and partners in an equitable and just manner.

## Activity Details

### Requirements

**Will county board or other local government approval be formally sought\*\* prior to acquisition, per 97A.056 subd 13(j)?**

No

**Describe any measures to inform local governments of land acquisition under their jurisdiction:**

We will follow the County/Township Board notification processes as directed by the current statutory language.

**Is the land you plan to acquire (fee title) free of any other permanent protection?**

Yes

**Will restoration and enhancement work follow best management practices including MS 84.973 Pollinator Habitat Program?**

Yes

**Is the restoration and enhancement activity on permanently protected land per 97A.056, Subd 13(f), tribal lands, and/or public waters per MS 103G.005, Subd. 15 or on lands to be acquired in this program?**

Yes

**Where does the activity take place?**

- WMA
- SNA
- AMA
- Permanently Protected Conservation Easements
- County/Municipal
- State Forests

### Land Use

**Will there be planting of any crop on OHF land purchased or restored in this program, either by the proposer or the end owner of the property, outside of the initial restoration of the land?**

Yes

**Explain what will be planted and include the maximum percentage of any acquired parcel that would be planted into foodplots by the proposer or the end owner of the property:**

For lands acquired that are conveyed as WMAs to the DNR, the DNR has indicated the following:

The primary purposes of WMAs are to develop and manage for the production of wildlife and for compatible outdoor recreation. To fulfill those goals, the DNR may use limited farming specifically to

enhance or benefit the management of state lands for wildlife. Lands proposed to be acquired as WMAs

may utilize farming to prepare previously farmed sites for native plant seeding. This is a standard practice across the Midwest. On a small percentage of WMAs (less than 2.5%), DNR uses farming to provide a winter food source for a variety of wildlife species in agriculture-dominated landscapes largely devoid of winter food sources. In some cases this necessitates the use of GMO treated products to facilitate herbicide use in order to control weeds present in the seedbank, however, neonicotinoids will not be used.

**Will insecticides or fungicides (including neonicotinoid and fungicide treated seed) be used within any activities of this proposal either in the process of restoration or use as food plots?**

No

**Is this land currently open for hunting and fishing?**

No

**Will the land be open for hunting and fishing after completion?**

Yes

**Describe any variation from the State of Minnesota regulations:**

NA

**Who will eventually own the fee title land?**

- State of MN
- County
- Other : Municipality
- Local Unit of Government

**Land acquired in fee will be designated as a:**

- AMA
- State Forest
- County Forest
- SRA
- Other
- WMA
- SNA
- City Owned : Owatonna

**Are there currently trails or roads on any of the proposed acquisitions?**

Yes

**Describe the types of trails or roads and the allowable uses:**

TPL is not aware of any trails or roads on any of the acquisitions on the parcel list. If any trails are discovered TPL will consult with LSOHC to determine appropriate actions and resolution.

**Will the trails or roads remain and uses continue to be allowed after OHF acquisition?**

Yes



**How will maintenance and monitoring be accomplished?**

TPL is not aware of any trails or roads on any of the acquisitions. If any are discovered on lands to be managed by the DNR, they will be managed per DNR policy for WMAs, AMAs, SNAs or State Forests. If they are discovered on lands to be managed by local units of government, they will be managed per a maintenance and monitoring plan developed in consultation with LSOHC staff.

**Will new trails or roads be developed or improved as a result of the OHF acquisition?**

No

**Will the land that you acquire (fee or easement) be restored or enhanced within this proposal's funding and availability?**

Yes

**Other OHF Appropriation Awards**

**Have you received OHF dollars through LSOHC in the past?**

Yes

**Are any of these past appropriations still OPEN?**

Yes

Approp Year	Funding Amount Received	Amount Spent to Date	Funding Remaining	% Spent to Date
24	\$2,555,000	-	-	-
23	\$2,981,000	\$843,293	\$2,137,707	28.29%
22	\$2,636,000	\$1,711,929	\$924,071	64.94%
21	\$2,623,000	\$2,067,645	\$555,355	78.83%
20	\$1,148,000	\$1,123,991	\$24,009	97.91%
18	\$1,345,000	\$1,345,000	-	100.0%
17	\$1,436,000	\$1,424,700	\$11,300	99.21%
Totals	\$14,724,000	\$8,516,558	\$6,207,442	57.84%

**Timeline**

Activity Name	Estimated Completion Date
Finalize restoration and enhancement plans	June 30, 2026
Land acquired	June 30, 2028
Initial site development	Fall 2030
Landowner negotiations, agreements and due diligence	June 30, 2027
Restoration and enhancement	June 30, 2030

Budget

**Grand Totals Across All Partnerships**

<b>Item</b>	<b>Funding Request</b>	<b>Total Leverage</b>	<b>Leverage Source</b>	<b>Total</b>
Personnel	\$792,000	\$40,000	Federal Sourced	\$832,000
Contracts	\$4,107,000	\$35,000	Federal Sourced	\$4,142,000
Fee Acquisition w/ PILT	\$4,424,600	-	-	\$4,424,600
Fee Acquisition w/o PILT	\$775,400	-	-	\$775,400
Easement Acquisition	-	\$25,000	Federal Sourced	\$25,000
Easement Stewardship	-	-	-	-
Travel	\$27,000	\$3,000	Private Sourced, Private Sourced	\$30,000
Professional Services	\$270,000	-	-	\$270,000
Direct Support Services	\$235,200	\$245,200	Private Sourced, Private Sourced, Private Sourced	\$480,400
DNR Land Acquisition Costs	\$125,000	-	-	\$125,000
Capital Equipment	-	-	-	-
Other Equipment/Tools	\$7,000	-	-	\$7,000
Supplies/Materials	\$141,000	\$1,000	Private Sourced	\$142,000
DNR IDP	\$50,000	-	-	\$50,000
<b>Grand Total</b>	<b>\$10,954,200</b>	<b>\$349,200</b>	-	<b>\$11,303,400</b>

**Partner: The Trust For Public Land**

**Totals**

Item	Funding Request	Total Leverage	Leverage Source	Total
Personnel	\$325,000	-	-	\$325,000
Contracts	\$50,000	-	-	\$50,000
Fee Acquisition w/ PILT	\$4,424,600	-	-	\$4,424,600
Fee Acquisition w/o PILT	\$775,400	-	-	\$775,400
Easement Acquisition	-	-	-	-
Easement Stewardship	-	-	-	-
Travel	-	\$2,000	Private Sourced	\$2,000
Professional Services	\$120,000	-	-	\$120,000
Direct Support Services	\$81,200	\$81,200	Private Sourced	\$162,400
DNR Land Acquisition Costs	\$125,000	-	-	\$125,000
Capital Equipment	-	-	-	-
Other Equipment/Tools	-	-	-	-
Supplies/Materials	-	-	-	-
DNR IDP	\$50,000	-	-	\$50,000
<b>Grand Total</b>	<b>\$5,951,200</b>	<b>\$83,200</b>	-	<b>\$6,034,400</b>

**Personnel**

Position	Annual FTE	Years Working	Funding Request	Total Leverage	Leverage Source	Total
Protection and Legal Staff	0.63	3.0	\$325,000	-	-	\$325,000

**Partner: Great River Greening**

**Totals**

Item	Funding Request	Total Leverage	Leverage Source	Total
Personnel	\$425,000	-	-	\$425,000
Contracts	\$4,054,000	-	-	\$4,054,000
Fee Acquisition w/ PILT	-	-	-	-
Fee Acquisition w/o PILT	-	-	-	-
Easement Acquisition	-	-	-	-
Easement Stewardship	-	-	-	-
Travel	\$27,000	-	-	\$27,000
Professional Services	\$150,000	-	-	\$150,000
Direct Support Services	\$140,000	\$162,000	Private Sourced	\$302,000
DNR Land Acquisition Costs	-	-	-	-
Capital Equipment	-	-	-	-
Other Equipment/Tools	\$7,000	-	-	\$7,000
Supplies/Materials	\$138,000	-	-	\$138,000
DNR IDP	-	-	-	-
<b>Grand Total</b>	<b>\$4,941,000</b>	<b>\$162,000</b>	<b>-</b>	<b>\$5,103,000</b>

**Personnel**

Position	Annual FTE	Years Working	Funding Request	Total Leverage	Leverage Source	Total
Great River Greening Personnel	1.05	5.0	\$425,000	-	-	\$425,000

**Partner: Clean River Partners**

**Totals**

Item	Funding Request	Total Leverage	Leverage Source	Total
Personnel	\$42,000	\$40,000	Federal Sourced	\$82,000
Contracts	\$3,000	\$35,000	Federal Sourced	\$38,000
Fee Acquisition w/ PILT	-	-	-	-
Fee Acquisition w/o PILT	-	-	-	-
Easement Acquisition	-	\$25,000	Federal Sourced	\$25,000
Easement Stewardship	-	-	-	-
Travel	-	\$1,000	Private Sourced	\$1,000
Professional Services	-	-	-	-
Direct Support Services	\$14,000	\$2,000	Private Sourced	\$16,000
DNR Land Acquisition Costs	-	-	-	-
Capital Equipment	-	-	-	-
Other Equipment/Tools	-	-	-	-
Supplies/Materials	\$3,000	\$1,000	Private Sourced	\$4,000
DNR IDP	-	-	-	-
<b>Grand Total</b>	<b>\$62,000</b>	<b>\$104,000</b>	-	<b>\$166,000</b>

**Personnel**

Position	Annual FTE	Years Working	Funding Request	Total Leverage	Leverage Source	Total
Clean River Partners Staff	0.4	3.0	\$42,000	\$40,000	Federal Sourced	\$82,000

**Amount of Request:** \$10,954,200

**Amount of Leverage:** \$349,200

**Leverage as a percent of the Request:** 3.19%

**DSS + Personnel:** \$1,027,200

**As a % of the total request:** 9.38%

**Easement Stewardship:** -

**As a % of the Easement Acquisition:** -

Total Leverage (from above)	Amount Confirmed	% of Total Leverage	Amount Anticipated	% of Total Leverage
\$349,200	\$87,200	24.97%	\$262,000	75.03%

**Detail leverage sources and confirmation of funds:**

The partnership provides privately sourced leverage for 51% of DSS; 11% of travel costs; and Clean River Partners provides leverage for 50% of personnel and \$60,000 for contracts and easement acquisition. The partnership also seeks various state, local and private funds to acquire property and conduct enhancements/restorations.

**Does this proposal have the ability to be scalable?**

Yes

### If the project received 50% of the requested funding

**Describe how the scaling would affect acres/activities and if not proportionately reduced, why?**

The Little Cannon River Stream Restoration is not a proportionately scalable project because engineering/design and FEMA analysis are determined by project, not by acreage. A 50% reduction would restore the AMA portion only. The scalability of other restorations and enhancements is dependent on the site details.

**Describe how personnel and DSS expenses would be adjusted and if not proportionately reduced, why?**

Program management costs (personnel, travel, and DSS expenses) will be reduced, but not proportionately, because program coordination, and oversight costs remain consistent regardless of appropriation amount. CRP's program administration is consistent regardless of acres protected or restored in order to manage the program and maintain partner and community relationships.

### If the project received 30% of the requested funding

**Describe how the scaling would affect acres/activities and if not proportionately reduced, why?**

The Little Cannon River Stream Restoration is not a proportionately scalable project because engineering/design and FEMA analysis are determined by project, not by acreage. A 30% reduction would restore the AMA portion and some of the easement portion. The scalability of other sites is dependent on the site details.

**Describe how personnel and DSS expenses would be adjusted and if not proportionately reduced, why?**

Program management costs (personnel, travel, and DSS expenses) will be reduced, but not proportionately because program coordination and oversight costs remain consistent regardless of appropriation amount. CRP's program administration is consistent regardless of acres protected or restored in order to manage the program and maintain partner and community.

### Personnel

**Has funding for these positions been requested in the past?**

Yes

**Please explain the overlap of past and future staffing and position levels previously received and how that is coordinated over multiple years?**

FTEs listed are an estimate of the personnel time required to produce the grant deliverables put forward in this proposal. An array of staff draw from these funds for legal work, negotiating with landowners, crafting of acquisition documents, coordinating with agency partners, working with contractors, restoration and enhancement activities, conducting landowner outreach, and managing the grant. We use only those personnel funds necessary to achieve the goals of the program.

### Contracts

**What is included in the contracts line?**

Clean River Partners contract line for OHF funds includes accounting service cost; for leverage funds, it includes conservation practices.

TPL's contract line includes potential site clean-up and initial restoration activities.

GRG's contract line includes restoration/enhancement contracts by service providers.

## Professional Services

**What is included in the Professional Services line?**

- Appraisals
- Other : Environmental site assessments
- Surveys
- Title Insurance and Legal Fees

## Fee Acquisition

**What is the anticipated number of fee title acquisition transactions?**

We anticipate we will close 2 to 3 transactions and investigate 2 others.

## Travel

**Does the amount in the travel line include equipment/vehicle rental?**

Yes

**Explain the amount in the travel line outside of traditional travel costs of mileage, food, and lodging**

NA

**I understand and agree that lodging, meals, and mileage must comply with the current MMB Commissioner Plan:**

Yes

## Direct Support Services

**How did you determine which portions of the Direct Support Services of your shared support services is direct to this program?**

Clean River Partners' DSS rate has been approved by the DNR in 2022. About 9.5% of Clean River Partners' DSS is provided by privately sourced leverage.

TPL's DSS request is based upon its federal rate which has been approved by the MN DNR and 50% of these costs are requested from the OHF grant while 50% is contributed as privately sourced leverage.

GRG's DSS rate has been approved by the DNR on October 4, 2019. GRG's DSS rate includes the allowable direct and necessary expenditures that are not captured in other line items in the budget. A portion, not exceeding 50%, of these costs are requested from the grant and the balance is contributed as privately sourced leverage.

## Other Equipment/Tools

**Give examples of the types of Equipment and Tools that will be purchased?**

Hand tools, saws, brush cutters, personal protective equipment, burn equipment, seed collection equipment, repairs and other necessary equipment to complete restoration and enhancement activities.

**Federal Funds**

**Do you anticipate federal funds as a match for this program?**

Yes

**Are the funds confirmed?**

No

**What is the approximate date you anticipate receiving confirmation of the federal funds?**

2/1/2025



## Output Tables

### Acres by Resource Type (Table 1)

Type	Wetland	Prairie	Forest	Habitat	Total Acres
Restore	0	0	3	0	3
Protect in Fee with State PILT Liability	0	0	0	492	492
Protect in Fee w/o State PILT Liability	0	0	0	88	88
Protect in Easement	0	0	0	0	0
Enhance	19	19	221	23	282
<b>Total</b>	<b>19</b>	<b>19</b>	<b>224</b>	<b>603</b>	<b>865</b>

### Total Requested Funding by Resource Type (Table 2)

Type	Wetland	Prairie	Forest	Habitat	Total Funding
Restore	-	-	\$33,000	-	\$33,000
Protect in Fee with State PILT Liability	-	-	-	\$5,067,500	\$5,067,500
Protect in Fee w/o State PILT Liability	-	-	-	\$901,700	\$901,700
Protect in Easement	-	-	-	-	-
Enhance	\$109,000	\$155,000	\$2,138,000	\$2,550,000	\$4,952,000
<b>Total</b>	<b>\$109,000</b>	<b>\$155,000</b>	<b>\$2,171,000</b>	<b>\$8,519,200</b>	<b>\$10,954,200</b>

### Acres within each Ecological Section (Table 3)

Type	Metro/Urban	Forest/Prairie	SE Forest	Prairie	N. Forest	Total Acres
Restore	0	0	0	3	0	3
Protect in Fee with State PILT Liability	0	0	0	492	0	492
Protect in Fee w/o State PILT Liability	0	0	0	88	0	88
Protect in Easement	0	0	0	0	0	0
Enhance	0	0	48	234	0	282
<b>Total</b>	<b>0</b>	<b>0</b>	<b>48</b>	<b>817</b>	<b>0</b>	<b>865</b>

### Total Requested Funding within each Ecological Section (Table 4)

Type	Metro/Urban	Forest/Prairie	SE Forest	Prairie	N. Forest	Total Funding
Restore	-	-	-	\$33,000	-	\$33,000
Protect in Fee with State PILT Liability	-	-	-	\$5,067,500	-	\$5,067,500
Protect in Fee w/o State PILT Liability	-	-	-	\$901,700	-	\$901,700
Protect in Easement	-	-	-	-	-	-
Enhance	-	-	\$2,705,000	\$2,247,000	-	\$4,952,000
<b>Total</b>	<b>-</b>	<b>-</b>	<b>\$2,705,000</b>	<b>\$8,249,200</b>	<b>-</b>	<b>\$10,954,200</b>

### Average Cost per Acre by Resource Type (Table 5)

Type	Wetland	Prairie	Forest	Habitat
Restore	-	-	\$11,000	-
Protect in Fee with State PILT Liability	-	-	-	\$10,299
Protect in Fee w/o State PILT Liability	-	-	-	\$10,246
Protect in Easement	-	-	-	-
Enhance	\$5,736	\$8,157	\$9,674	\$110,869

**Average Cost per Acre by Ecological Section (Table 6)**

Type	Metro/Urban	Forest/Prairie	SE Forest	Prairie	N. Forest
Restore	-	-	-	\$11,000	-
Protect in Fee with State PILT Liability	-	-	-	\$10,299	-
Protect in Fee w/o State PILT Liability	-	-	-	\$10,246	-
Protect in Easement	-	-	-	-	-
Enhance	-	-	\$56,354	\$9,602	-

**Target Lake/Stream/River Feet or Miles**

2 miles

## Parcels

### Sign-up Criteria?

No

### Explain the process used to identify, prioritize, and select the parcels on your list:

Trust for Public Land works with its public partners to identify and prioritize projects that meet their objectives and are on their priority lists. Criteria includes whether the land provides critical habitat for game and non-game species and quality public recreational opportunities, presence of unique plants and animals species (including SGCN), goals of conservation plans, adjacency to other public land or habitat complexes, existence of local support, immediacy of threats, landowner willingness and time frame.

Great River Greening works with land owning entities (public and protected private) and interested stakeholders to identify parcels where there is a need for restoration or enhancement of lands and water resources. Parcels are selected using the following criteria: permanently protected status (WMA, AMA, SNA, Forestry, County Conservation, etc.), ecological and habitat value and potential (biodiversity, size and location), congruence with existing plans and priority areas, willing and committed landowners (demonstrated through leveraged match), and leveraging opportunities.

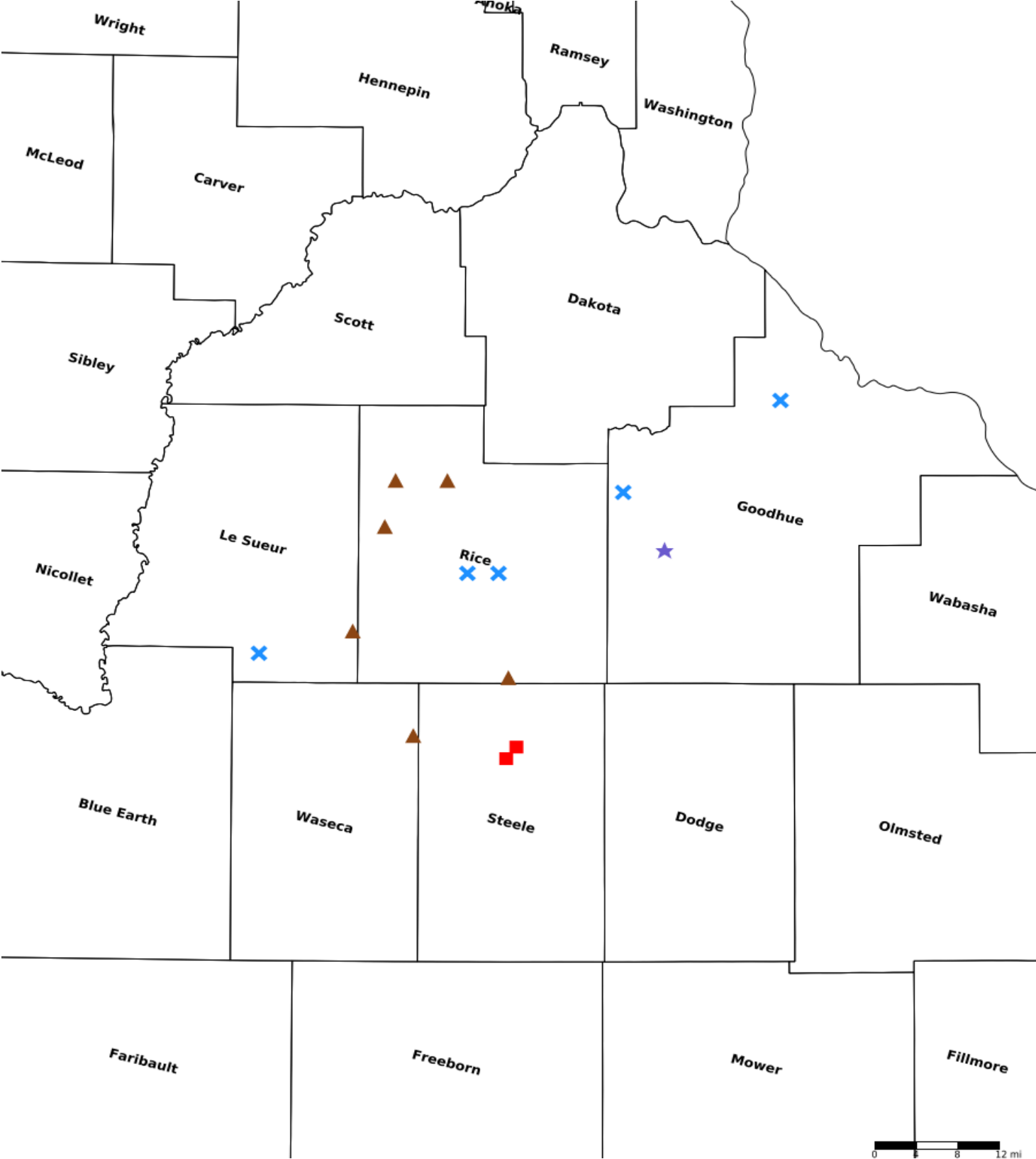
### Restore / Enhance Parcels

Name	County	TRDS	Acres	Est Cost	Existing Protection	Description
Warsaw WMA	Goodhue	11118208	44	\$321,000	Yes	Forest enhancement via 25 acres of invasives removal; prairie enhancement via 19 acres of shrub, invasives, and tree removal
Cannon River Turtle Preserve SNA	Goodhue	11316235	15	\$139,000	Yes	Buckthorn/shrub removal on 15 acres of forest
Little Cannon River	Goodhue	11018201	23	\$2,541,000	Yes	Trout stream restoration and floodplain reconnection on AMA and upstream permanent easement
Dove Lake WMA II	Le Sueur	10924221	40	\$584,000	Yes	Enhancement of 40 acres of forest through cedar and buckthorn removal and some thinning
Trout Lily WMA	Rice	11020217	50	\$669,000	Yes	40 acres of buckthorn & Siberian elm control in a young forest stand; 7 acres of perimeter shrub control surrounding previous hardwood seedings; 3 acres aspen seeding/planting
Sunktokeca WMA Ph III	Rice	11021214	113	\$687,000	Yes	Shrubland/prairie buckthorn and cedar removal on 83 acres; tile breaking and Siberian elm control as corrective action/enhancement on 30 acres of a forest restoration

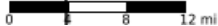
**Protect Parcels**

<b>Name</b>	<b>County</b>	<b>TRDS</b>	<b>Acres</b>	<b>Est Cost</b>	<b>Existing Protection</b>
Horseshoe Lake AMA	Le Sueur	10923212	127	\$1,270,000	No
Milest WMA	Rice	11121204	75	\$200,000	No
Gray Fox WMA II	Rice	11122228	79	\$200,000	No
Faribault WMA II	Rice	10920233	37	\$185,000	No
Spring Brook WMA	Rice	11122203	218	\$2,180,000	No
Straight River II	Steele	10720204	53	\$556,000	No
Straight River I	Steele	10820234	58	\$200,000	No
Moonan Marsh WMA	Waseca	10822225	75	\$316,000	No

Parcel Map

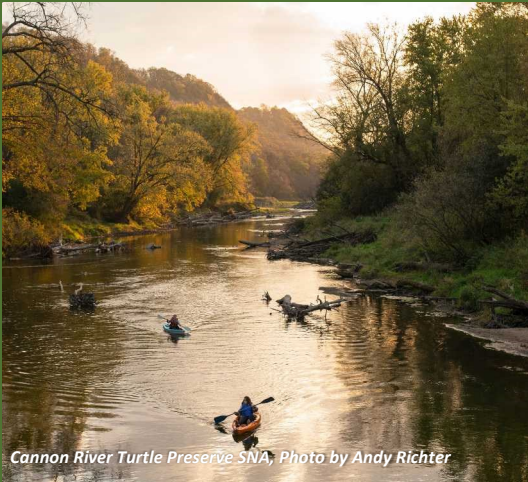


- Protect in Easement
- ▲ Protect in Fee with PILT
- Protect in Fee W/O PILT
- ★ Restore
- ✕ Enhance
- ⊕ Other



# Cannon River Watershed

## Habitat Protection and Restoration Program - Phase 14



Cannon River Turtle Preserve SNA, Photo by Andy Richter

### ABOUT THE PROGRAM

The goals of this program are to protect existing high-quality habitat, restore degraded habitat, prevent degradation of water quality, and provide public access to lands within the Cannon River Watershed. Over the next 3 to 5 years, this request will permanently protect approximately 580 acres and restore or enhance approximately 285 acres of high priority wildlife habitat, creating new public accesses within an hour drive for more than half of all Minnesotans.

### OUTDOOR HERITAGE FUND REQUEST

\$10,954,000 in order to protect 580 acres and restore or enhance 285 acres, including restoring over 2 miles of the Little Cannon River, a designated trout stream.

### CANNON RIVER WATERSHED

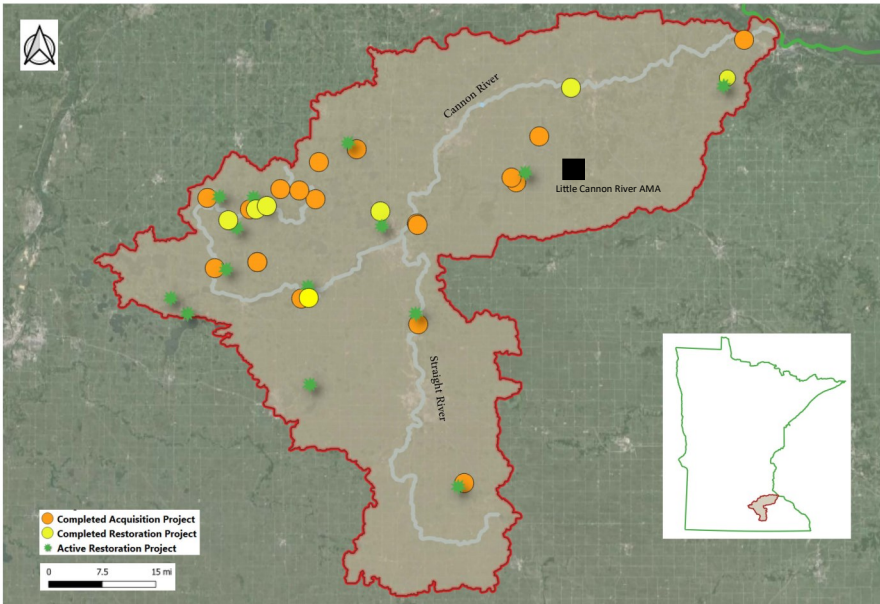
The Cannon River is one of Minnesota's Wild and Scenic Rivers. Its 1,460 sq. mile watershed includes over 800 linear miles of streams and rivers that drain a diverse landscape located south of the Twin Cities. Historically comprised of Big Woods, prairie and wetland habitat, the landscape is now predominately agricultural fields and, to a lesser extent, urban development. **Today, 18% of the landscape remains as forest, wetland or prairie habitat and many of these areas have become degraded.** High quality habitat in the Cannon River Watershed is present but continues to be degraded by invasive species or converted to residential development and to agricultural production. Protection, restoration, and enhancement of this watershed's high quality habitat are important for maintaining what remains of the region's unimpaired waters and increasingly vital habitat needs.



Little Cannon River AMA, Photo by Andy Richter



John Peter Hoffman-WMA, Photo by Phil Davies



## ACCOMPLISHMENTS

These protected and restored places now provide valued habitat for a wide variety of wildlife, offering quality hunting opportunities for waterfowl, deer, pheasant, and turkeys, and trout fishing within an hour's drive for 3.4 million Minnesotans.

- Eight new Wildlife Management Areas have been created and eight existing ones have been expanded. Additionally, a new Aquatic Management Area (AMA) has been established.
- The Cannon River Turtle Preserve Scientific and Natural Area has been expanded by 25%.
- In total, 3,110 acres of land have been permanently protected and are now publicly accessible.
- Furthermore, across four WMAs and a county park, 498 acres of habitat have been restored or enhanced and 452 acres of restoration are underway on 14 WMAs.

## A PARTNERSHIP WITH PROVEN RESULTS



Clean River Partners will administer and coordinate the program and conduct landowner outreach. CRP is a member-based nonprofit organization that inspires people and organizations to value, protect, and improve the Cannon River Watershed's land and water.



Trust for Public Land will be responsible for protecting land in fee. TPL works to protect land and create parks for people, ensuring healthy, livable communities for generations to come. Since 1986, Trust for Public Land has protected over 170 special places throughout Minnesota, totaling over 100,000 acres.



Great River Greening will be responsible for restoring and enhancing habitat. For over 25 years, GRG has worked to restore land and water resources throughout Minnesota. With the help of local volunteers, GRG has restored degraded forests and prairies and improved outdoor recreation experiences, our economy, and our drinking water.

## FOR MORE INFORMATION

Contact Jennifer Tonko,  
CRP Executive Director at  
507-786-3913x1 or  
[jennifer@cleanriverpartners.org](mailto:jennifer@cleanriverpartners.org)



Goodhue County SWCD  
104 East 3rd Ave, P.O. Box 335  
Goodhue, MN 55027  
651-923-5286 Ext. 4  
[www.goodhueswcd.org](http://www.goodhueswcd.org)

May 6<sup>th</sup> 2024

Lessard-Sams Outdoor Heritage Council  
100 Rev. Dr. Martin Luther King Jr. Blvd  
State Office Building, Room 95  
St. Paul, MN 55155

RE: Cannon River Watershed Habitat Protection and Restoration Program - Phase 14

Dear LSOH Council,

The purpose of this letter is to express our support for the Cannon River Watershed Habitat Protection and Restoration Program - Phase 14 being submitted by Great River Greening.

The Goodhue SWCD is the local government unit tasked with the honor of assisting the landowners of Goodhue County who are interested in improving our local water resources through various local/state/federal conservation programs. The Goodhue SWCD has implemented numerous conservation practices within the drainage area leading up to this proposal's area of interest. Water and Sediment Control Basins, Grassed Waterways, Streambank Stabilization, Terraces, CRP acres, etc have all be targeted and implemented by willing landowners with cooperation from our SWCD staff, and partners @ the NRCS, over the past 75 years.

More recently, the Cannon River Watershed Habitat Protection and Restoration Program has demonstrated the effective partnership between local SWCDs, Clean River Partners, The Trust for Public Land & Great River Greening for outreach, protection and restoration in the Cannon River Watershed. This multilevel collaborative approach to this project highlights and utilizes the expertise of a wide-range of skill-sets and funding sources from local, state, and non-profit groups.

A significant portion of the Cannon River Watershed Habitat Protection and Restoration Program - Phase 14 targets a stream restoration project along the Little Cannon River. This project is a priority item in our local SWCD plans as well as the recently approved Cannon River Comprehensive Watershed Management Plan. It's in the best interest of Goodhue SWCD to support this effort and be an active partner in this project which will restore over a mile segment of trout stream in the historic Sogn Valley of Goodhue County.

Sincerely,

A handwritten signature in black ink, appearing to read "Beau Kennedy".

Beau Kennedy  
Goodhue SWCD Manager





# Cannon River Watershed Joint Powers Organization

Mission: Work collaboratively to improve and protect the natural resources within the Cannon River Watershed to ensure prosperity of our urban and agricultural communities.

May 7<sup>th</sup>, 2024

Lessard-Sams Outdoor Heritage Council  
100 Rev. Dr. Martin Luther King Jr. Blvd  
State Office Building, Room 95  
St. Paul, MN 55155

RE: Cannon River Watershed Habitat Protection and Restoration Program- Phase 14

Dear LSOH Council,

This purpose of this letter is to express our support for the Cannon River Watershed Habitat Protection and Restoration Program- Phase 14 being submitted by Clean River Partners.

The Cannon River Watershed Joint Powers Organization (CRWJPO) is a local government unit formed in 2019 to coordinate water management authorities under Minnesota Statute in the Cannon River Watershed. The CRWJPO has identified the Little Cannon River Watershed as a priority area to reduce overall sediment in the Cannon River Watershed. Funds have been set aside to promote structural and nonstructural practices in this area for this purpose.

The Little Cannon River stream restoration project is listed as a priority item in the approved Cannon River Comprehensive Watershed Management Plan and the CRWJPO has set aside funds for technical assistance for this restoration work.

This multilevel collaborative approach to this project highlights and utilizes the expertise of a wide-range of skill-sets and funding sources from local, state, and non-profit groups.

A significant portion of the Cannon River Watershed Habitat Protection and Restoration Program- Phase 14 targets a stream restoration project along the Little Cannon River. It's in the best interest of CRWJPO to be a partner in this project which could restore a large segment of trout stream in the historic Sogn Valley, along with contribute to the efforts of the organization in improving the Cannon River.

Emmie Scheffler  
CRWJPO Administrator