

# BONE LAKE SOUTH WETLAND ACQUISITION & RESTORATION

COMFORT LAKE-FOREST LAKE WATERSHED DISTRICT HA04

Bone Lake,  
Washington  
County

Protect MCBS native plant communities (shrub swamp, rich fen, tamarack swamp)

Rare opportunity to protect large acreage in developing metro region

Promote populations of threatened and endangered species

Enhance native prairie or oak savanna habitat

Increase landscape resiliency by adding up to 600 ac-ft of volume storage (6x CLFLWD goal)

Restore 120 acres of wetland (habitat and hydrology benefits)

Support from landowner, lake association, and city

Improve Bone Lake water quality, preserving aquatic plants/fisheries

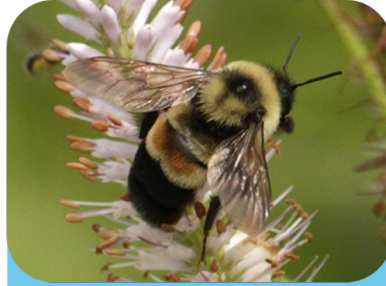


# Indicator Species



## Monarch Butterfly

Convert 100+ acres of cropland to oak savanna or restored native prairie estimated to grow an additional 500+ new stems of milkweed and produce an additional 250+ monarch butterflies. An acre of restored/enhanced grassland could potentially contribute 3-8 monarchs to the population (LSOHC Guidance 2016).



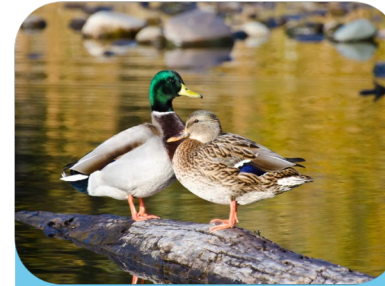
## Rusty Patch Bumblebee

Native prairie/oak savanna provides habitat for pollinators such as rusty patch bumblebee



## Trumpeter Swan

Proposed restoration/management of 119 acres of wetland with associated open water provides breeding, nesting and foraging habitat for one additional breeding pair of trumpeter swan, (LSOHC Guidance 2016).



## Mallards

The proposed 119-acre wetland restoration supports the life history requirements of an additional 48 mallard ducks (LSOHC Guidance 2016).



## Blanding's Turtle

12 element occurrence observations of Blanding's turtles within a 2.5-mile radius of site (NHIS database, 2022); this one of the largest concentrations in Minnesota. Project supports all required habitats for Blanding's turtle to persist and breed. Restore/ manage 305 acres of critical wetland/upland habitats which will directly support nesting, feeding, juvenile survivorship, overwintering/ hibernation.



## White-Tail Deer

This proposal provides critical habitat for white-tail deer, supporting an additional 6 deer per 300 acres of restored habitat (LSOHC Guidance 2016).