

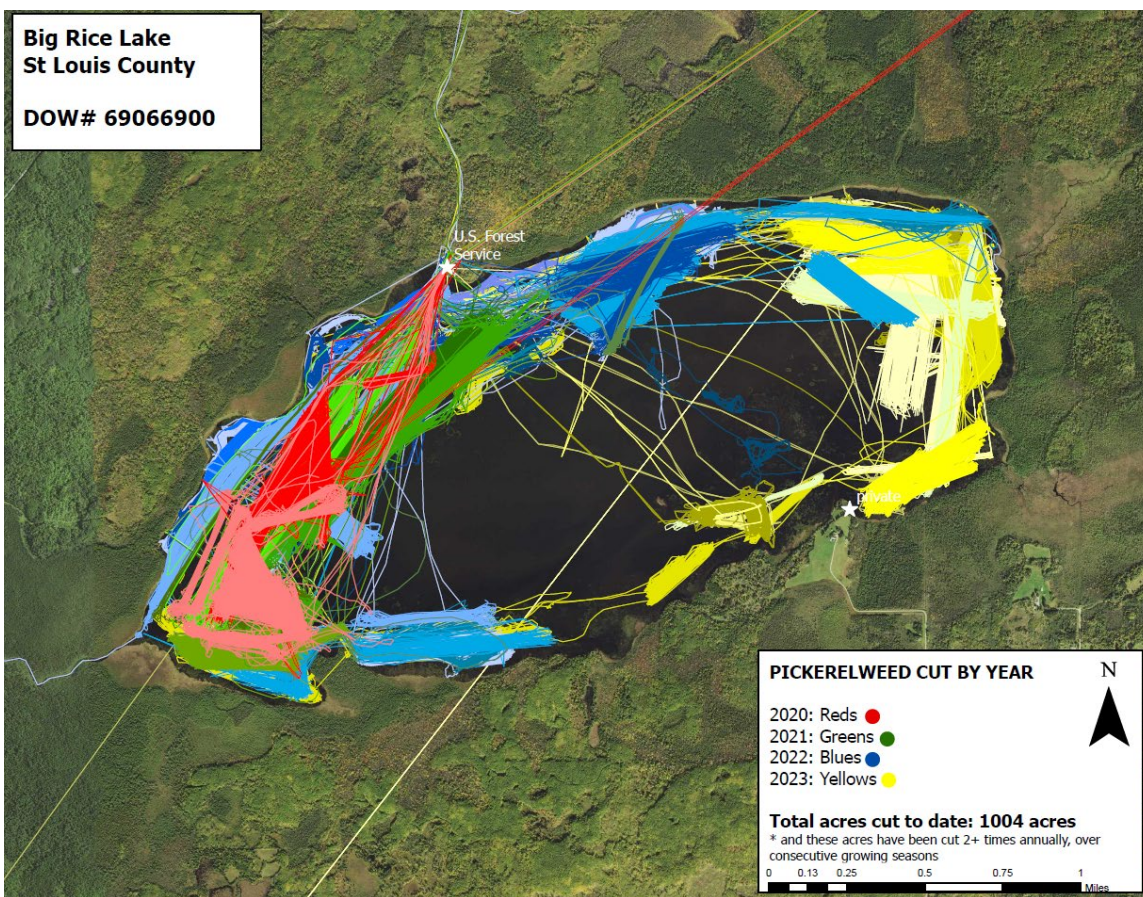
Big Rice Lake – Wild Rice Enhancement FY20 Extension Request

November 16th, 2023

Big Rice Lake management efforts are a partnership with the U.S. Forest Service, 1854 Treaty Authority, Fond du Lac Band of Lake Superior Chippewa, and Minnesota Department of Natural Resources.



Since July 2020, DNR and Fond du Lac have cut just over 1000 acres of pickerelweed at Big Rice Lake. Fond du Lac and DNR cut in 2020 and 2021, but due to equipment issues, Fond du Lac was not able to cut in 2022 or 2023. Most of 1000 acres have been cut twice or more, as shown by the tracklog lines on the map below. However, pickerelweed is an aggressive and abundant perennial species that grows from the rhizome and seeds, so there continues to be a need to intensively cut pickerelweed for the next two years.



View of the west end, 2020



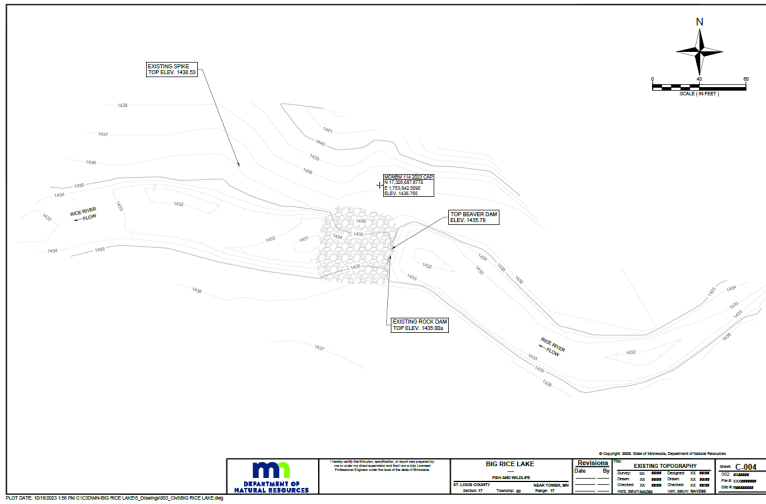
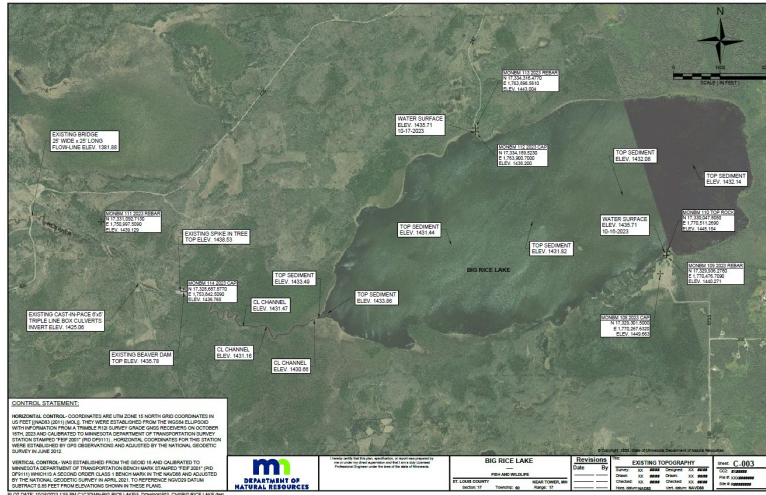
View of the west end, 2023



Big Rice Lake – Wild Rice Enhancement FY20 Extension Request

November 16th, 2023

The survey data below shows an aerial view of Big Rice Lake and the outlet where a topographic survey was completed once new Trimble technology was acquired to work in remote, forested areas. This information will now allow us to design a restoration plan for the outlet that will lead to the variable water levels the lake needs to ensure healthy wild rice habitat, longterm.



The images below show the raw data that is viewable in Google Earth.

