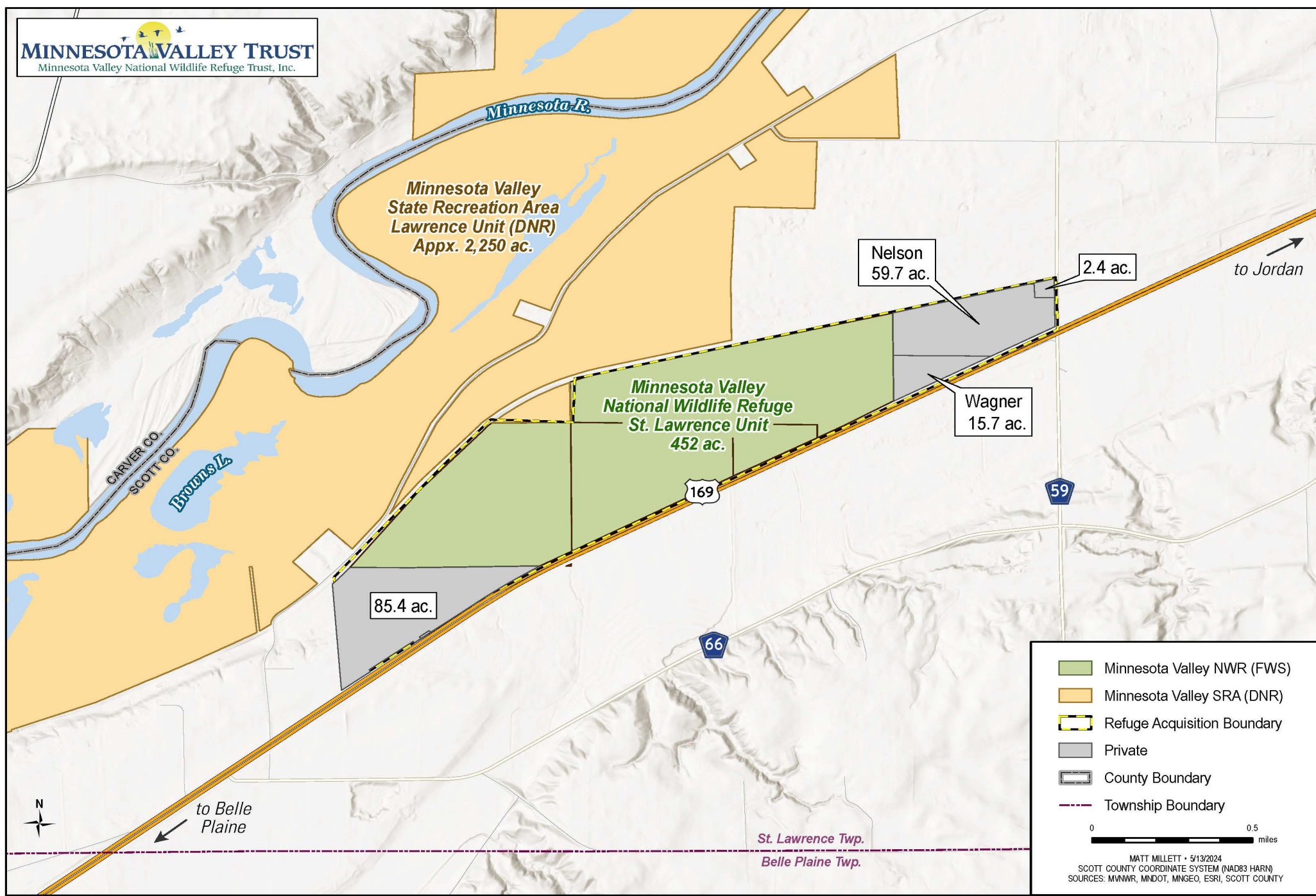




Presentation to LSOHC 5/22/24
Request to Acquire Fee Title from a
Local Unit of Government

DEBORAH LOON
EXECUTIVE DIRECTOR

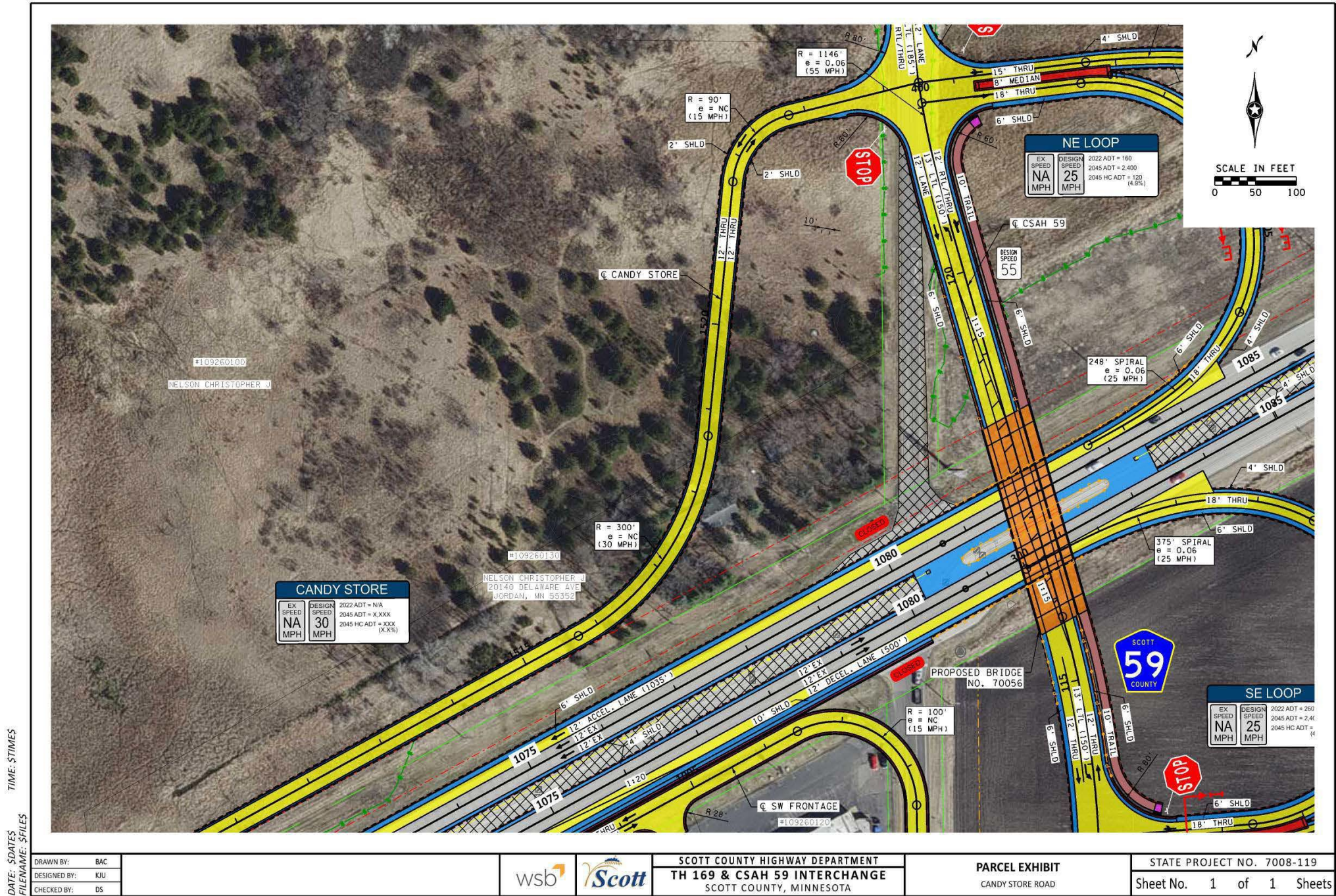
Map – St. Lawrence Unit (Refuge) and MN Valley State Recreation Area (MN DNR)



Photos - Wagner's Candy Store Property



Sketch – Scott County’s initial plan for frontage road through Nelson property to Candy Store



DATE: SDATES
FILENAME: SFILES
TIME: STIMES

DRAWN BY: BAC
DESIGNED BY: KJU
CHECKED BY: DS



SCOTT COUNTY HIGHWAY DEPARTMENT
TH 169 & CSAH 59 INTERCHANGE
SCOTT COUNTY, MINNESOTA

PARCEL EXHIBIT
CANDY STORE ROAD

STATE PROJECT NO. 7008-119
Sheet No. 1 of 1 Sheets

St. Lawrence Unit - Habitat

- ▶ Rare, remnant mesic prairie
- ▶ Wet meadow
- ▶ Remnant oak savanna

St. Lawrence Unit – Plant Species

- ▶ A USFWS bioblitz of this Unit found many wet meadow species according to Native Plant Communities of Minnesota (MN DNR 2005), including:

Swamp milkweed
Spotted water hemlock
Red-osier dogwood
Common boneset
Spotted touch-me-not
Cut-leaved water bugleweed

Water smartweed
Virginia mountain mint
Zig-zag goldenrod
Stiff goldenrod
Prairie cord grass
Blue vervain

St. Lawrence Unit – Bird Species

- ▶ Species of greatest conservation need observed during the USFWS bioblitz included:

Bobolink

Least flycatcher

Marsh wren

Sedge wren

Willow flycatcher

American Woodcock

- ▶ Other interesting birds observed included:

Virginia rails

Swamp and pond sparrows

Orchard oriole

Red-tailed hawk

Killdeer

Barn swallow

American redstart

St. Lawrence Unit - Game Species

- ▶ Hunters can find:
 - Turkey
 - Deer
 - Pheasant
- ▶ But current access to the Unit is very difficult, both for the public and USFWS

Improved Access

- ▶ This acquisition will significantly improve the public's ability to access this Refuge Unit AND
- ▶ The USFWS's ability to conduct habitat restoration and enhancement work on the Unit
- ▶ Access and parking area will be moved from Highway 169 to Delaware Avenue / County Road 59

Request

- ▶ Minnesota Valley Trust requests LSOHC authorization to use an existing Outdoor Heritage Fund grant (ML 2023) to acquire approximately 59.7 acres from Scott County
- ▶ Nelson property to be acquired in 2024 includes 3 acre building site with home and 56 acres vacant land
- ▶ Future request – acquire approximately 15.7 acres from Scott County (the Wagner Candy Store property) using a future OHF appropriation