

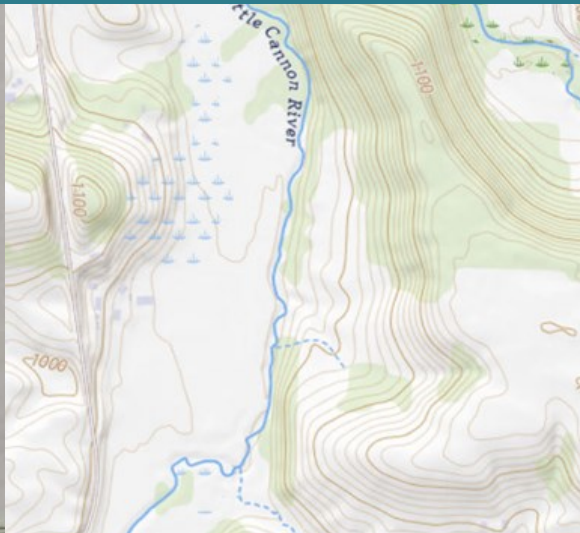
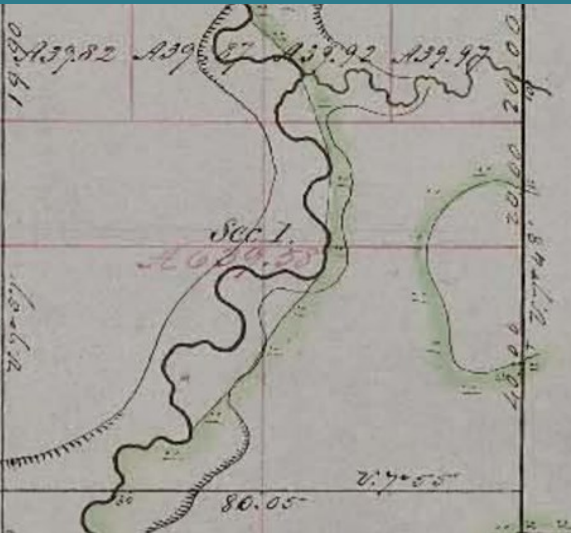
Tuesday, August 27

AM

Hearing Handouts

Cannon River Watershed Habitat Protection and Restoration Program - Phase 14 (HA01)

This locally-led partnership works throughout the Cannon River Watershed to create additional public lands through fee-title acquisition, partnering with landowners to preserve their land for habitat and future generations. Additionally, we enhance and restore degraded habitat on protected land. In Phase 14, we propose to continue these successful and in-demand partnership activities while specifically focusing on a unique opportunity to restore a significant portion of the Little Cannon River. The Little Cannon River restoration details are highlighted below.



(Left) This plat map from the 1800s illustrates the original course of the river. In contrast, the modern topographic map (right) demonstrates the altered path of the stream.



(Left) This aerial photo from 1938, alongside the present-day version (right), illustrates a decrease in farming along the riparian zone, making it an opportune time for this restoration project.

ML24 funding supports buckthorn removal and meadow enhancement. ML25 funding is for stream restoration and floodplain reconnection to improve the habitat for native fish and mussel species (Redside Dace*, Brook Trout, Cylindrical Papershell, and more). The Minnesota DNR considers this project a top priority due to its recreational and ecological value. An additional \$100,000 in matching funds have been secured through the Fishers and Farmers Partnership for this effort in 2025.



*Denotes MN Species of special concern.

Cannon River Watershed Habitat Protection and Restoration Program - Phase 14 (HA01)

Leveraging the recent OHF funded acquisition of the Little Cannon River AMA, the Phase 14 request will restore the natural channel of the Little Cannon River. This restoration will help to reduce flood impacts and sediment load in the impaired stream. Additionally, it will improve fishing access by 11,800 feet, equivalent to 2.25 miles.



Reconnect the river to its floodplain.



Restore habitat for animal species.










Add meandering bends, riffle, and pool complexes.

Phase 14 funds will allow us to maximize the benefits of our leverage funding from Fishers & Farmers Partnership (FFP). FFP funding will:

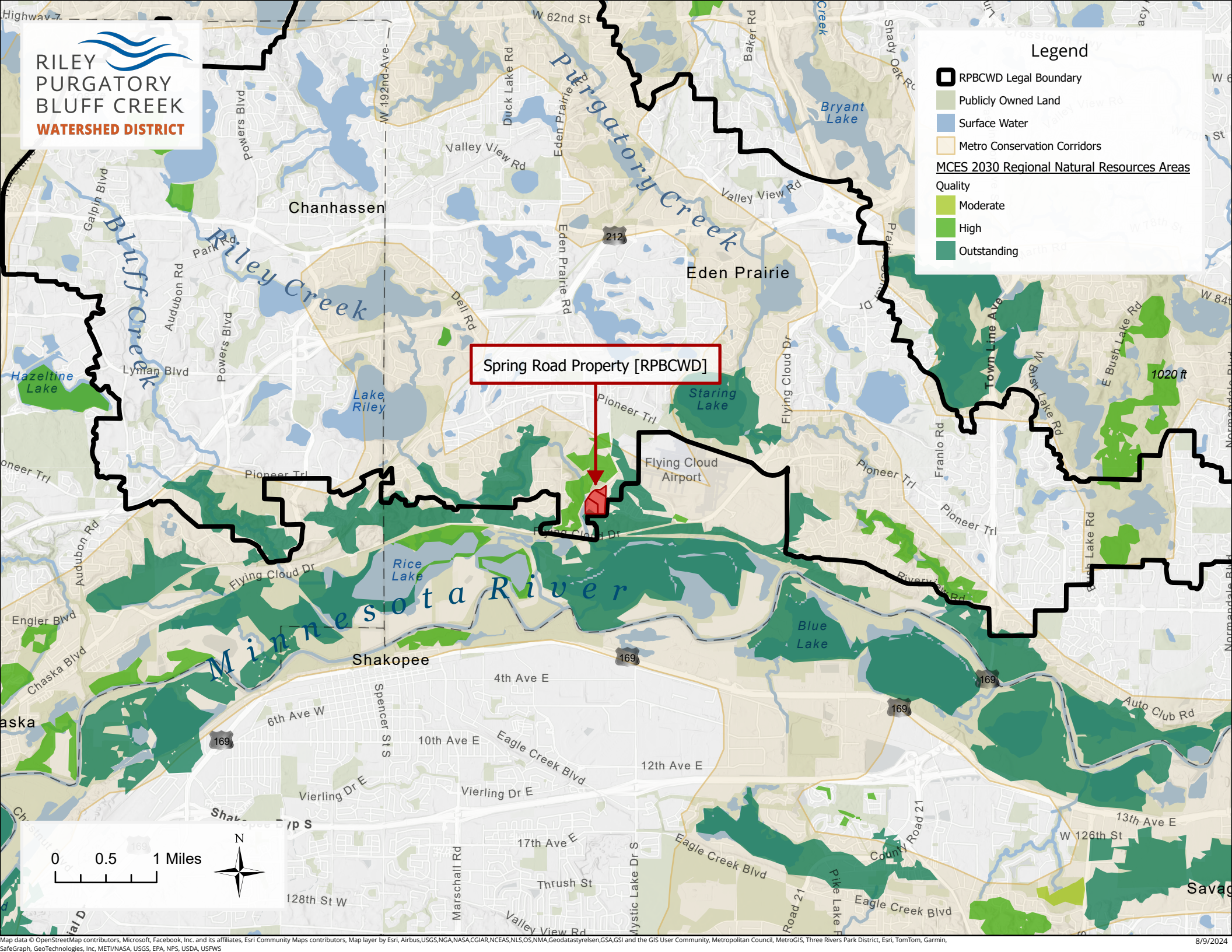
1. Secure the conservation easement south of the Little Cannon AMA.
2. Incentivize farmers to change agricultural practices to reduce sedimentation in the river farther upstream.

**RILEY
PURGATORY
BLUFF CREEK**
WATERSHED DISTRICT

Legend

-  RPBCWD Legal Boundary
-  Publicly Owned Land
-  Surface Water
-  Metro Conservation Corridors
- MCES 2030 Regional Natural Resources Areas**
- Quality**
-  Moderate
-  High
-  Outstanding

Spring Road Property [RPBCWD]



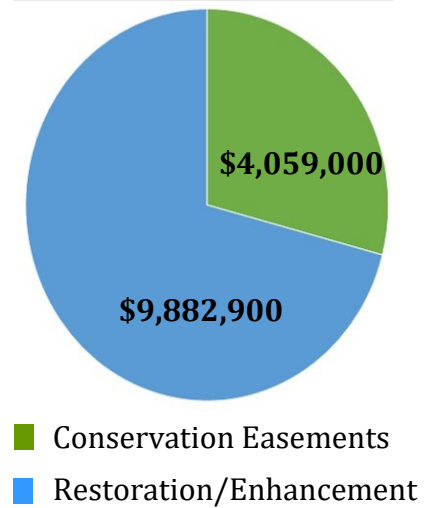
0 0.5 1 Miles



HA 03 Anoka Sand Plain Habitat Conservation - Phase 10

- ◆ Protect 525 acres of private lands in conservation easements.
- ◆ Restore/Enhance 1,630 acres of prairie, oak savanna, wetlands, and fire-dependent woodlands and 3,500 feet of stream.
- ◆ Expand Habitat Cores and Corridors through Conservation Easements.
- ◆ Protect rare species and SGCN through conservation easements and habitat restoration/enhancement.
- ◆ Restore/enhance ASP priority habitats and increase biodiversity.

Funding Request Distribution



ASP Phase 10 Project Examples



Sherburne National Wildlife Refuge

- ◆ Enhance 376 acres of prairie.
- ◆ Remove non-native, invasive black locust and Siberian elm.
- ◆ Reduce woody encroachment.
- ◆ Biochar production and application.
- ◆ Enhance habitat core.
- ◆ Restore/enhance ASP priority habitats.
- ◆ Increase biodiversity.
- ◆ Enhance habitat for rare species, SGCN and pollinators.



Tubercled
Rein Orchid

Bethel WMA

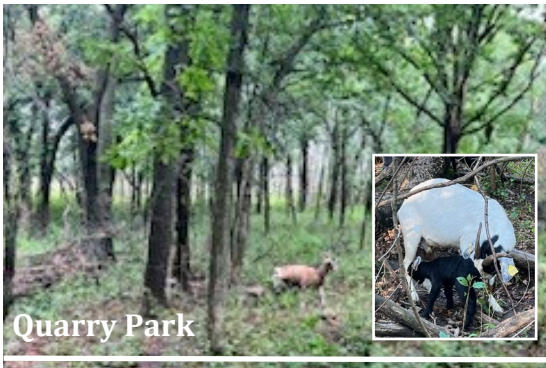
- ◆ Enhance 44 acres of sedge meadow and dry prairie.
- ◆ Control buckthorn and woody encroachment and invasive species.
- ◆ Conduct prescribed fires.
- ◆ Enhance habitat core.
- ◆ Restore/enhance ASP priority habitats.
- ◆ Increase biodiversity.
- ◆ Enhance habitat for rare species, SGCN and pollinators.

Anoka Sand Plain Partnership

10 - Year Strategic Conservation Action Plan - summary

ANOKA SAND PLAIN PARTNERSHIP PRIORITIES

- ◆ Protect, restore and enhance habitat cores and conservation corridors to minimize the impacts of new development and enhance native plant communities and wildlife resiliency.
- ◆ Sites are selected to meet Action Plan goals and based on habitat type, rare species, habitat connectivity, recreation opportunities, benefits to water, and landowner engagement.



Quarry Park



Carlos Avery WMA



Two Inlets Bdé Heháka - Omashkooz
Zaaga'igaans Regional Park



Pickerel Lake Conservation Easement

OUTSTANDING ECOSYSTEMS

- ◆ Over 150,000 acres in the ASP Ecoregion are ranked Outstanding or High Biodiversity by the MCBS.
- ◆ The ASP provides habitat for 97 known or predicted Species of Greatest Conservation Need and 131 federally or state endangered, threatened, or special concern.
- ◆ The ASP contains some of the best examples of the critically imperiled oak savanna, sand dunes, and shallow wetland plant communities.
- ◆ Sandhill cranes, trumpeter swans, red-headed woodpeckers, Blanding's turtles, and wild turkey make their home in the ASP.

CLOSE TO HOME RECREATION

- ◆ Notable ASP public open space include Sherburne NWR, Carlos Avery WMA, Crane Meadows NWR, Hellen Allison Savanna SNA, Sand Dunes State Forest, and Cedar Creek Ecosystem Science Preserve.
- ◆ The Mississippi and Rum River, and the many lakes are destinations for paddling and fishing.

QUALITY SURFACE WATER, GROUNDWATER AND DRINKING WATER

- ◆ The ASP is a primary recharge area for the aquifers of the Twin Cities Metro Area due to its infiltration rates and geologic intersection with aquifers.
- ◆ Numerous wetlands in the ASP provide flood protection, water purification, shoreline stabilization, groundwater recharge, and streamflow maintenance.



RIM - Integrating Clean Water and Habitat – Phase III Proposal: HA 04

A Unique RIM Easement Program – Stacking Legacy Benefits

This program acquires easements with the potential to make the greatest impacts for habitat and clean water. Projects must be identified as priorities in local watershed management plans and address OHF’s statewide priorities. This easement program offers options for habitat restoration AND habitat protection anywhere there is an approved watershed management plan.

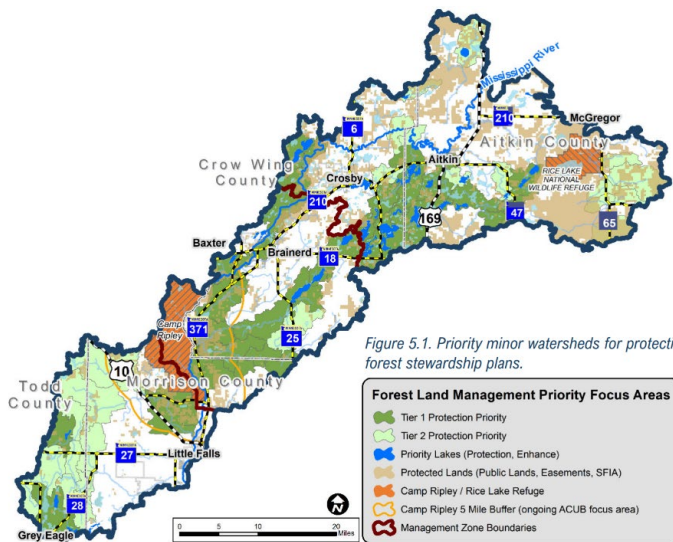


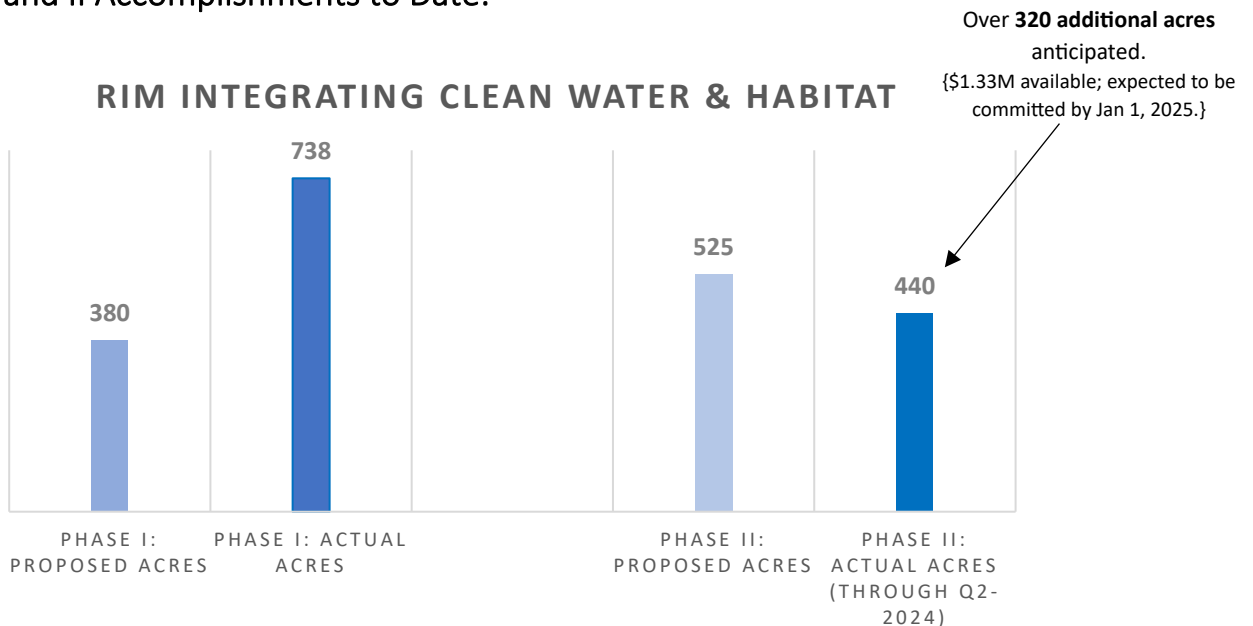
Figure 5.1. Priority minor watersheds for protection and forest stewardship plans.

Locally developed, state approved watershed plans set **measurable natural resource goals** and identify **locations and activities that benefit habitat, clean water, and other priorities.**

The RIM-Integrating Clean Water and Habitat program **complements over \$159M invested from the Clean Water Fund since FY18 for implementing watershed plans.**

Map: Mississippi River-Brainerd Comprehensive Watershed Management Plan, 2023.

Phase I and II Accomplishments to Date:



Demand for Additional Funding Right Now

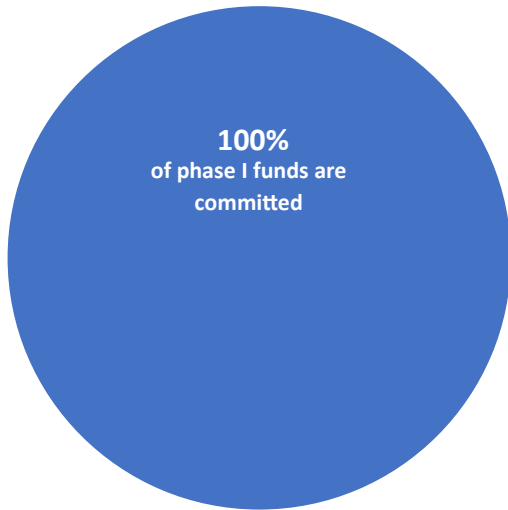
The program continues to gain momentum as watershed plans are approved and more areas become eligible for this funding. Without sufficient funding right now, we risk losing opportunities to permanently restore and protect high quality habitats. Phase I funds are 100% committed. Phase II funding is expected to be committed prior to January 1, 2025.

- **2024 – Q2:** \$1.2 Million committed for new easements.
- **2024 – Q3:** Anticipating \$1 million+ in easement applications for Q3-2024; including a 600-acre forest protection easement located in a “tier 1” priority area for the Mississippi River-Brainerd Watershed plan (map of priority areas on page 1).

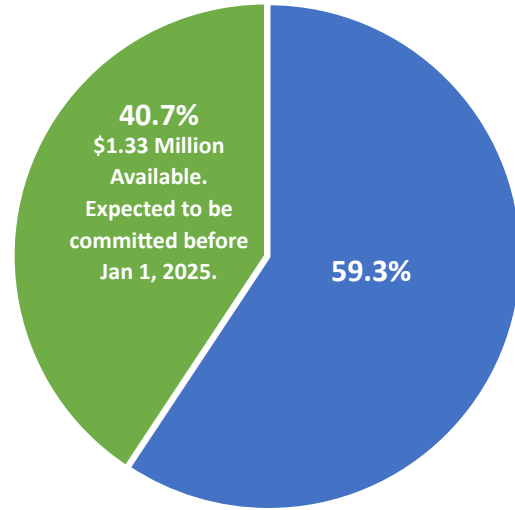
RIM Integrating Clean Water & Habitat

■ Funds Committed ■ Funds Available

Phase I (\$2,358,00)



Phase II (\$3,269,00)



Project Highlights:

- Shakopee Creek restoration - Kandiyohi SWCD
- Bluffland protection – SE MN
- Marshall County – Swift-Coulee stream restoration with adjacent easements
- Mississippi River Watershed “priority lakes” protection
- Riparian forest protection – Meeker County
- Prairie restoration and habitat corridor – Grant County
- Riparian forest and grassland habitat protection – Pennington County
- Forested wetland protection – Douglas County
- Prairie restoration with wetland protection – Nobles & Murray County



Murray County – Prairie (to be restored) with wetland & stream protection adjacent to Wildlife Management Areas & shallow lakes.

Photo Credit: Murray SWCD



HA05: St. Croix Watershed Habitat Protection and Restoration

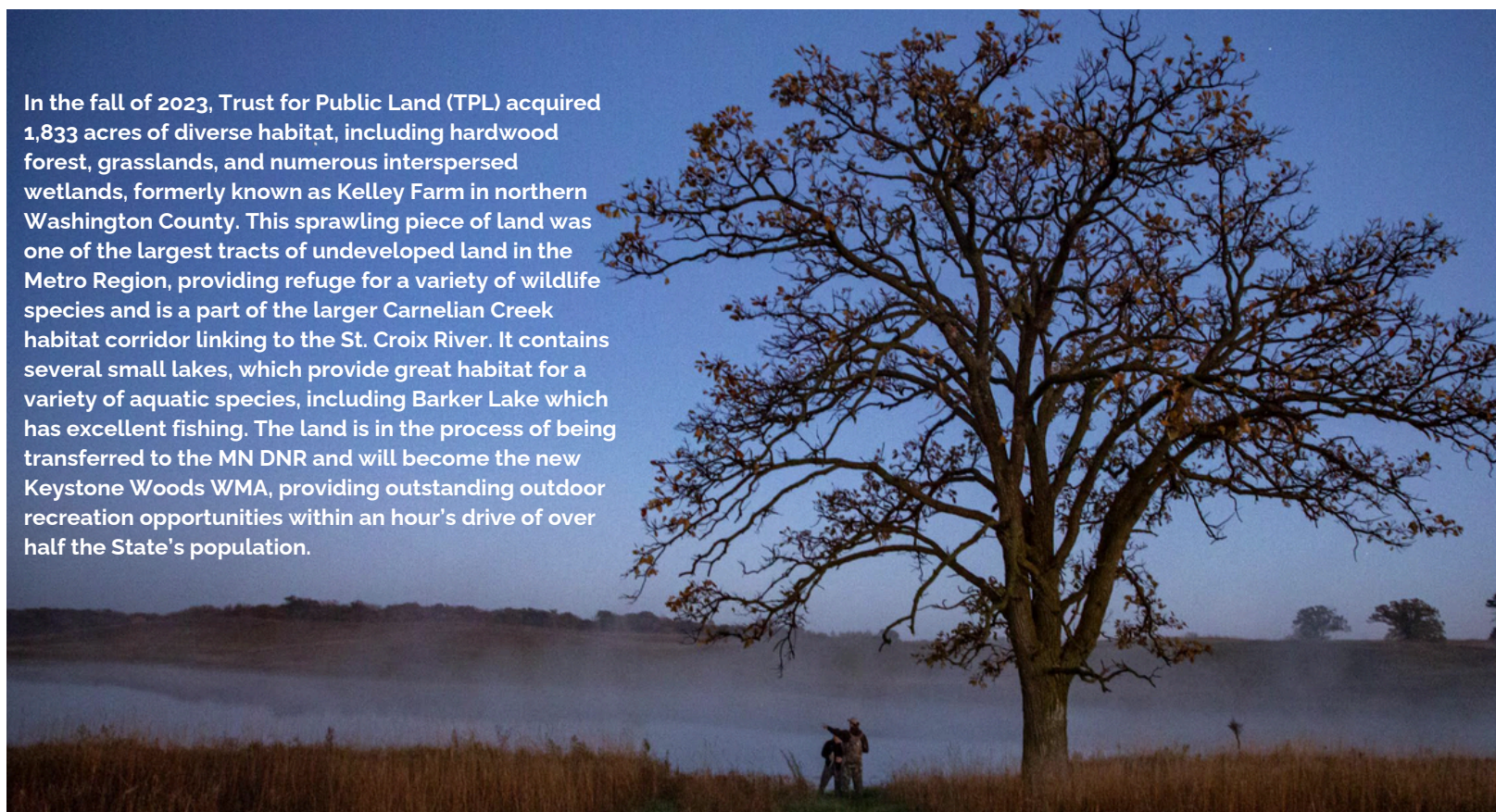
Phase 6

Protection through conservation easement - Willow River (Lourey)



Minnesota Land Trust closed on the Willow River (Lourey) conservation easement in May 2024, a 1,729-acre working forest project in Pine County that protects extensive northern hardwood forests, immature aspen stands, lowland conifer forests, lowland brush (bog), numerous wetlands, and over 11 miles of shoreline along the Willow River. These habitats support a significant number of Minnesota's Species in Greatest Conservation Need, such as gray wolf, red-shouldered hawk, veery, sedge wren, least flycatcher, swamp sparrow, ovenbird, and golden-winged warbler, among others.

Protection through fee-title acquisition - Keystone Woods

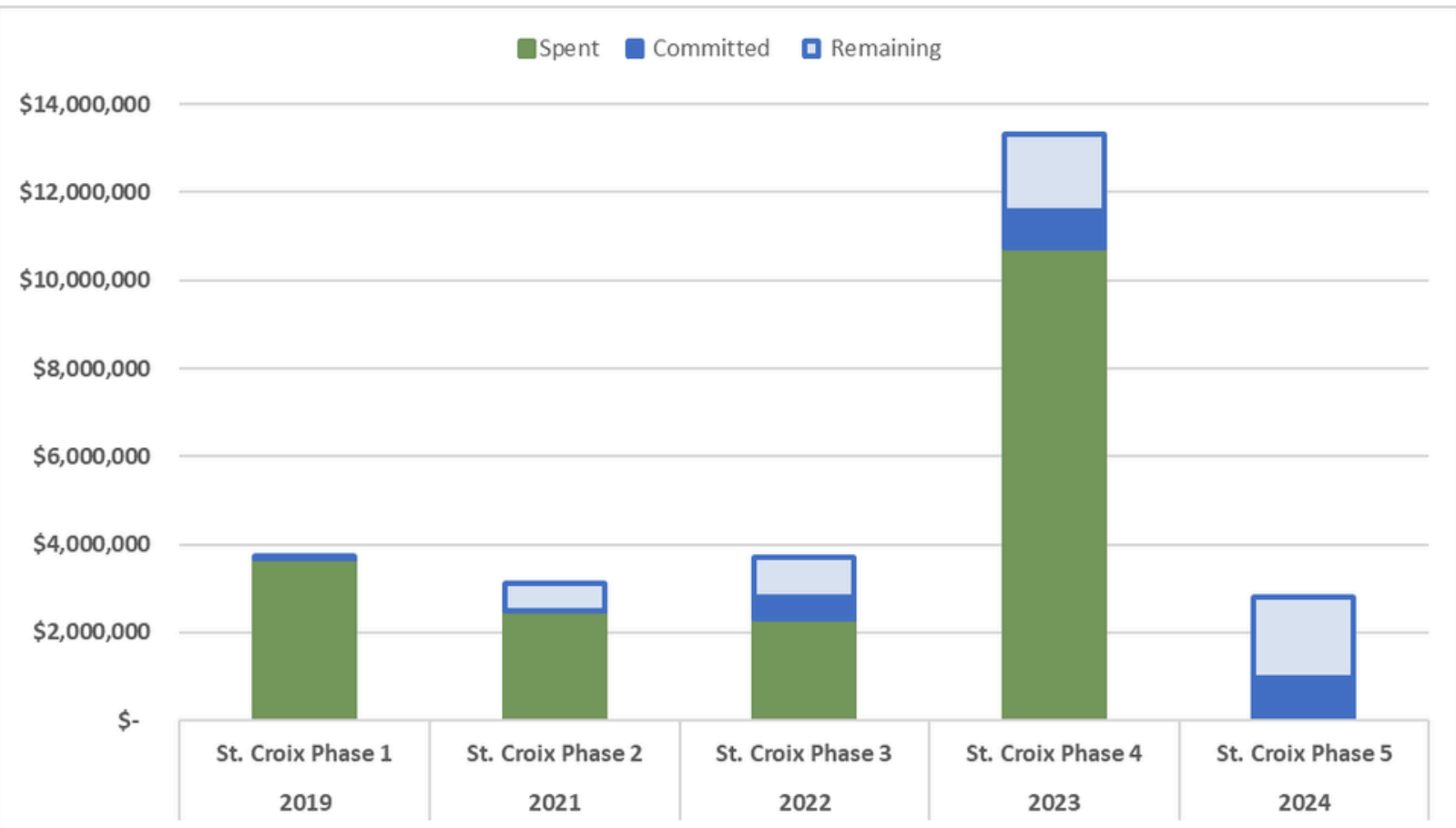


In the fall of 2023, Trust for Public Land (TPL) acquired 1,833 acres of diverse habitat, including hardwood forest, grasslands, and numerous interspersed wetlands, formerly known as Kelley Farm in northern Washington County. This sprawling piece of land was one of the largest tracts of undeveloped land in the Metro Region, providing refuge for a variety of wildlife species and is a part of the larger Carnelian Creek habitat corridor linking to the St. Croix River. It contains several small lakes, which provide great habitat for a variety of aquatic species, including Barker Lake which has excellent fishing. The land is in the process of being transferred to the MN DNR and will become the new Keystone Woods WMA, providing outstanding outdoor recreation opportunities within an hour's drive of over half the State's population.

HA05: St. Croix 6

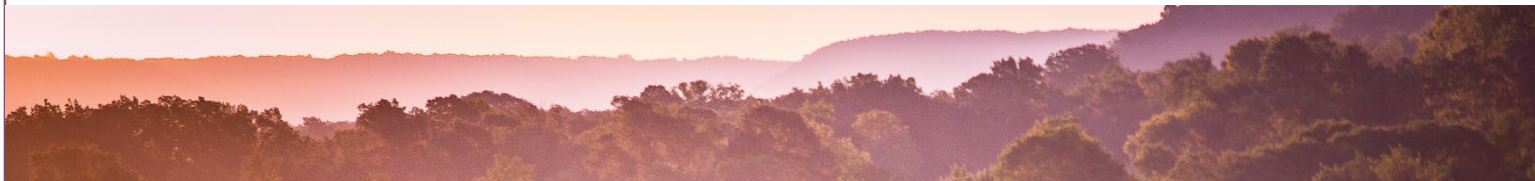
Results to Date through 8/1/2024

Grant Phase		Budget				Output									
		Total				Protection						Restore/Enhance			
		Award	Spent	Committed	Remaining	Protection Leverage			Acres Protected			Projects	Acres Restored/Enhanced		
						Proposed	Actual	% of Goal	Proposed	Outcome	% of Goal		Proposed	Outcome	% of Goal
2019 St. Croix Phase 1	In Progress	\$ 3,751,000	\$ 3,671,594	\$ -	\$ 79,406	\$ 208,500	\$ 519,980	249%	725	1,725	238%	4	50	18	36%
2021 St. Croix Phase 2	In Progress	\$ 3,112,000	\$ 2,482,409	\$ -	\$ 629,591	\$ 192,500	\$ -	0%	554	1,216	220%	2	0	0	
2022 St. Croix Phase 3	In Progress	\$ 3,704,000	\$ 2,300,684	\$ 518,000	\$ 885,316	\$ 327,400	\$ -	0%	668	1,339	200%	3	0	0	
2023 St. Croix Phase 4	In Progress	\$ 13,306,000	\$ 10,742,709	\$ 828,000	\$ 1,735,291	\$ 5,260,000	\$ 321,000	6%	300	1,312	437%	7	0	0	
2024 St. Croix Phase 5	In Progress	\$ 2,806,000	\$ 56,000	\$ 906,000	\$ 1,844,000	\$ 386,000	\$ -	0%	463	822	178%	2	0	0	
2025 St. Croix Phase 6	Proposed	\$ 5,658,600	\$ -	\$ -	\$ 5,658,600	\$ 637,000	\$ -	0%	862	0	0%	0	0	0	



HA07: Southeast Minnesota Protection and Restoration

Phase 13



L to R - Laurie Arzaga (landowner), Jacob Hernandez (USFWS), Mark Van der Linden (MLT)

The U.S. Fish and Wildlife Service and Minnesota Land Trust teamed up to restore bluff prairie habitat at the Brownsville Bluff (Hey) conservation easement protected through the Phase 8 appropriation. A beloved local landmark that overlooks the town of Brownsville and the Mississippi River, the prairie was encroached upon by buckthorn and cedars, choking out the ultra-diverse prairie vegetation. This project showcases the collaboration between the partners. The Land Trust completed a conservation easement with the landowner in January 2023, then collaborated with the USFWS Partners for Fish and Wildlife Program to enhance this iconic landmark. Bluff prairies provide critical habitat to prairie pollinators and grassland birds; their location on the Mississippi flyway makes this habitat a critical refuge to an outsized number of birds annually. The Land Trust and USFWS are launching a Bluff Prairie Initiative to focus restoration efforts in the region.

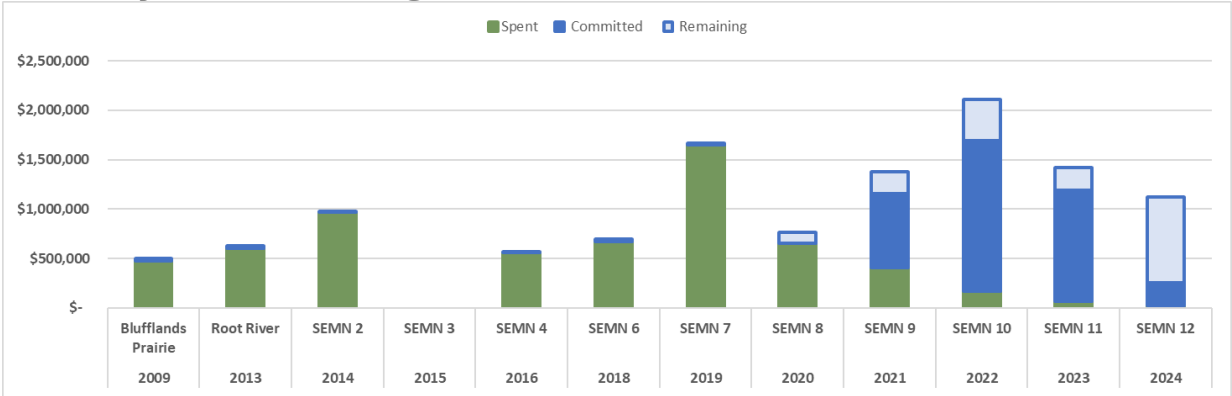
All Partners:

HA07: SE 13

Results to Date through 8/1/2024

Grant Phase			Budget				Output												
			Total				Protection									Restore/Enhance			
							Protection Leverage			Acres Protected			Shoreline (mi) Protected			Projects	Acres Restored/Enhanced		
			Award	Spent	Committed	Remaining	Proposed	Actual	% of Goal	Proposed	Outcome	% of Goal	Proposed	Actual	% of Goal		Proposed	Outcome	% of Goal
2009	Blufflands Prairie	Complete	\$ 500,000	\$ 471,900	\$ -	\$ 28,100	\$ -	\$ 100,000		300	548	183%	0.00	2.00		4	0	0	
2013	Root River	Complete	\$ 2,750,000	\$ 1,644,600	\$ -	\$ 1,105,400	\$ 152,000	\$ 17,000	11%	493	143	29%	0.00	0.30		3	160	456	285%
2014	SEM N 2	Complete	\$ 5,770,000	\$ 5,765,700	\$ -	\$ 4,300	\$ 2,159,300	\$ 2,294,950	106%	2,080	1,958	94%	7.00	8.67	124%	6	40	225	563%
2015	SEM N 3	Complete	\$ 2,910,000	\$ 2,910,000	\$ -	\$ -	\$ 19,800	\$ 14,200	72%	480	632	132%	0.00	3.00		3	56	715	1277%
2016	SEM N 4	Complete	\$ 5,000,000	\$ 4,991,500	\$ -	\$ 8,500	\$ 355,500	\$ 1,061,499	299%	2,240	1,886	84%	2.00	4.09	205%	9	60	41	68%
2017	SEM N 5	Complete	\$ 2,375,000	\$ 2,345,283	\$ -	\$ 29,717	\$ 247,900	\$ 687,972	278%	760	854	112%	1.50	2.91	194%	5	70	133	190%
2018	SEM N 6	Complete	\$ 2,142,000	\$ 2,095,568	\$ -	\$ 46,433	\$ 136,600	\$ 65,600	48%	730	584	80%	1.50	4.56	304%	6	154	162	105%
2019	SEM N 7	In Progress	\$ 5,741,000	\$ 5,546,274	\$ -	\$ 194,726	\$ 375,900	\$ 341,818	91%	1,990	1,532	77%	1.00	8.81	881%	9	195	3667	1881%
2020	SEM N 8	In Progress	\$ 2,704,000	\$ 2,461,107	\$ -	\$ 242,893	\$ 152,100	\$ 141,390	93%	660	432	65%	0.50	4.51	902%	4	265	1178	445%
2021	SEM N 9	In Progress	\$ 4,068,000	\$ 2,552,168	\$ 748,000	\$ 767,833	\$ 253,800	\$ 885,792	349%	1,098	1,006	92%	1.00	1.93	193%	4	753	614	82%
2022	SEM N 10	In Progress	\$ 5,313,000	\$ 718,444	\$ 1,526,456	\$ 3,068,100	\$ 252,200	\$ 501,520	199%	1,535	744	48%	2.00	0.22	11%	7	195	276	142%
2023	SEM N 11	In Progress	\$ 3,675,000	\$ 62,810	\$ 1,129,000	\$ 2,483,190	\$ 138,500	\$ -	0%	852	275	32%	0.90	0.00	0%	2	240	0	0%
2024	SEM N 12	In Progress	\$ 3,088,000	\$ 28,000	\$ 228,000	\$ 2,832,000	\$ 49,000	\$ -	0%	304	48	16%	1.50	0.00	0%	1	455	0	0%
2025	SEM N 13	Proposed	\$ 6,267,000	\$ -	\$ -	\$ 6,267,000	\$ 375,000	\$ -	0%	1,150	0	0%	0.00	0.00		0	375	0	0%

MLT Only: Grant Funding



HA08: Protecting Coldwater Fisheries on Minnesota's North Shore

Phase 3



Cook County, MN

Flute Reed River (Alt); Flute Reed River (Alt-Anderson)

Two adjacent, fully donated conservation easements on the Flute Reed River in Cook County protected in total 194 acres of boreal forest and wetland habitats and more than 1.5 miles of shoreline in the upper reaches of this designated trout stream. This protection ensures continued delivery of clear, cold water for trout and other aquatic organisms and helps achieve local priorities identified in the Lake Superior North One Watershed One Plan.

HA08: North Shore Coldwater Fisheries Phase 3

Results to Date through 8/1/2024



Grant Phase	Budget				Output									
	Total				Protection						Restore/Enhance			
	Award	Spent	Committed	Remaining	Acres Protected			Shoreline (mi) Protected			Projects	Acres Restored/Enhanced		
					Proposed	Outcome	% of Goal	Proposed	Actual	% of Goal		Proposed	Outcome	% of Goal
North Shore 2020 Coldwater Fisheries In Progress	\$ 1,809,000	\$ 1,595,162	\$ -	\$ 213,838	288	427	148%	1.00	2.09	209%	5	70	115	164%
North Shore 2022 Coldwater Fisheries 2 In Progress	\$ 3,395,000	\$ 398,987	\$ 376,000	\$ 2,620,013	600	492	82%	1.40	2.64	188%	5	0	0	
North Shore 2025 Coldwater Fisheries 3 Proposed	\$ 4,518,000	\$ -	\$ -	\$ 4,518,000	840	0	0%	2.00	0.00	0%	0	0	0	
Totals Across All Grants	\$ 5,204,000	\$ 1,994,150	\$ 376,000	\$ 2,833,850	888	919	104%	2.40	4.73	197%	10	70	115	164%

Lake County, MN *Lake Superior (Lehr)*

Minnesota Land Trust completed the purchase of a conservation easement near the city of Two Harbors in June 2024, protecting 61 acres of rugged North Shore forest habitat. The property includes a natural sea arch, a north-facing cliff, exposed bedrock shoreline, and a cobble beach along 2,378 feet of protected Lake Superior shoreline.



HA09 - Metro Big Rivers

Metro Big Rivers (MBR) Phase 15 will protect, restore and enhance 3,055 acres of wildlife habitat in the Metropolitan Urbanizing Area, with an emphasis on the Mississippi, Minnesota and St. Croix Rivers and their tributaries.

Metro Big Rivers is a proven, trusted partnership that gets results with Outdoor Heritage Funds for the LSOHC. MBR protects, connects and improves conservation lands in the metropolitan urbanizing area, expanding habitat for wildlife and Species of Greatest Conservation Need. MBR also creates and enhances opportunities for Twin Cities residents to connect with nature and wildlife near where they live.

Metro Big Rivers Phase 15 - 3,055 acres
Protect 1,350 acres • Restore / Enhance 1,705 acres

Outdoor Heritage Fund Request - \$21,763,900
Anticipated Leverage - \$2,244,600 (10%)

Metro Big Rivers exceeds goals and leverages OHF funds. Results to-date (through Phase 13):

- 11,400 acres complete + 720 in progress = 12,120 acres
- 108% of acreage goals achieved
- OHF funds leveraged 42% with \$19.6 million of other funds to-date

Why invest OHF funds in the Metro Urbanizing Area:

- Protect critical habitat and improve degraded habitat along and near the migratory flyways and tributaries in the metro area
- Protect significant habitat in the metro area from development
- Benefit wildlife and Species of Greatest Conservation Need
- Improve water quality and in-stream food availability
- Ensure Twin Cities metro residents have high-quality opportunities to connect with nature near where they live
- Introduce more people to nature-based activities like hunting, fishing, wildlife observation, photography, hiking and paddling

Why trust and invest in Metro Big Rivers Phase 15:

- MBR achieves the LSOHC's goals in the Metropolitan Urbanizing Area.
- MBR aggressively leverages OHF funds -- \$19.6 million to-date (42% of OHF funds spent).
- By July 2025, MBR will have completed Phases 1-10, be almost done with Phase 11 and be well into Phases 12 - 14.
- MBR has spent \$46.2 million and committed another \$2.4 million in OHF grants to-date. We have \$8.7 million left in current grants (excluding Phase 14 that just started).

Metro Big Rivers works with with public partners and landowners committed to conservation to achieve the priorities of the LSOHC for Outdoor Heritage Funds in the Metro Urbanizing Area.



For more information:
Deborah Loon
Minnesota Valley Trust
612 801 1935
DLoon@mnvalleytrust.org



Metro Big Rivers Selected Accomplishments

Friends of the Mississippi River restored and enhanced prairie and forest habitat at the new William H. Houlton Conservation Area through MBR Phases 5, 7, 8 and 12. This 335-acre site at the confluence of the Elk River and Mississippi River was acquired by the Trust for Public Land with MBR Phases 2 and 3. FMR and volunteers removed invasive woody and herbaceous plants from the floodplain and upland forest. The former agricultural fields and degraded grasslands were restored to diverse native prairie through seeding, mowing and prescribed burns. Through evaluation of restoration techniques and how well wildlife is returning, FMR found high success in the restoration efforts. A bird survey identified the endangered Henslow's sparrow and four other Species of Greatest Conservation Need: the dickcissel, grasshopper sparrow, LeConte's sparrow and sedge wren.



Great River Greening enhanced 74 acres of oak forest through MBR Phase 8 at Carroll's Woods & Schwarz Pond Parks. Located in Dakota County adjacent to Rosemount High School, the urban park complex is a mix of oak savanna and woodland forests providing an oasis for wildlife habitat in an otherwise built-up urban environment. Enhancement activities focused heavily on addressing the infestation of invasive tree, shrub and herbaceous species. This required multiple years of activities including cutting and removing, follow-up treatments and goat grazing. The final seasons of activities also included planting native understory plugs and sowing native seed into enhanced areas. Through numerous volunteer events hosted by GRG, community members and high school students assisted with habitat restoration and learned about the ecology and importance of the site.

Minnesota Valley Trust acquired 196 acres in Carver County for the Rapids Lake and San Francisco Units of the Minnesota Valley National Wildlife Refuge with four OHF grants - MBR 5, 6, 7 & 8. These strategic acquisitions protected priority lands from residential development and created new opportunities for the public to engage in wildlife-based recreation, education and interpretation. MVT and FWS have been restoring the oak savannas and remnant prairies, as well as converting former agricultural fields to high-quality prairies and wetlands. The restoration and enhancement work was completed with MBR 7, MBR 9, Conservation Partners Legacy Grants and other non-state funds.



Minnesota Land Trust protected with conservation easement the 84-acre Sand Creek (Norris) property in Scott County in November 2022 with MBR 9. The conservation easement permanently protects forested bluffs, a perennial stream, and wet-mesic hardwood forest within the Sand Creek watershed, a tributary of the Minnesota River. The property is near an extensive complex of public natural areas along the Lower Minnesota River, including the 5,490-acre Minnesota Valley State Recreation Area and the 14,000-acre Minnesota Valley National Wildlife Refuge.

Trust for Public Land acquired in fee title 1,833 acres of diverse habitat in northern Washington County to create the new Keystone Woods WMA. Acquired in 2 phases in the fall of 2023, this acquisition utilized 7 OHF appropriations (4 MBR grants). Formerly known as Kelley Farm, this property was one of the largest tracts of undeveloped land in the Metro Region. It provides high biodiversity habitat for a variety of wildlife species. The land is in the process of being transferred to the MN DNR and will provide outstanding outdoor recreation opportunities.

TPL is leading a multi-phase restoration and enhancement process on this land, which will include prairie, wetland, woodland, and oak savanna. Work has already begun to remove woody invasive species. Over the next 5 to 7 years, approximately 1,700 acres of prairie, forests, and wetlands will be restored or enhanced, ensuring resilient, high-quality habitat for wildlife and recreational users to enjoy.



HA12: Protecting Minnesota's Lakes of Outstanding Biological Significance

Phase 4



Paul Raymaker

Study: Water clarity in lakes affecting loons' success

MPR News: Kirsti Marohn Brainerd, Minn. April 13, 2024 8:00 AM

<https://www.mprnews.org/story/2024/04/13/study-water-clarity-in-lakes-affecting-loons-success>



Excerpt: A new research paper says reduced water clarity of lakes in mid summer, linked to increased rainfall caused by climate change, is affecting the survival of common loons in northern Wisconsin....The researchers found a positive correlation between water clarity in the month of July and the body mass of loon chicks....“As time goes by, with climate change and warming temperatures, we can expect that loon chicks will continue to suffer”.



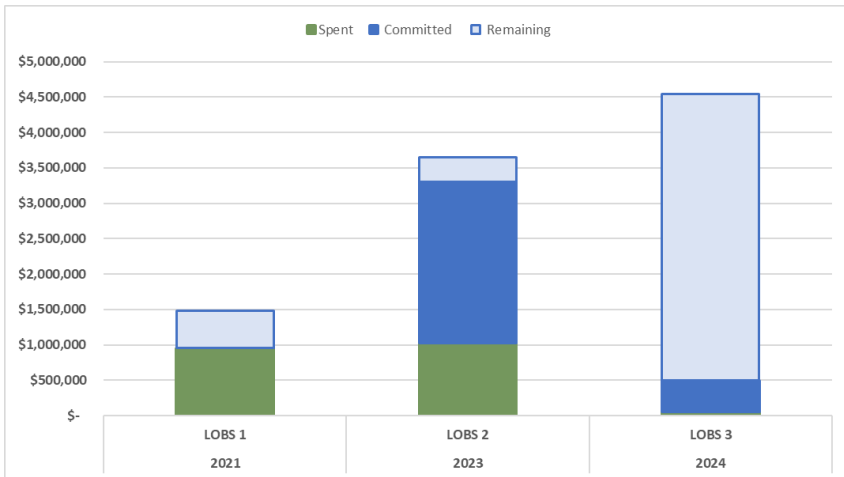
HA12: LOBS 4

Results to Date through 8/1/2024

Grant Phase		Budget				Output									
		Total				Protection									
						Protection Leverage			Acres Protected		Shoreline (mi) Protected			Projects	
		Award	Spent	Committed	Remaining	Proposed	Actual	% of Goal	Proposed	Outcome	% of Goal	Proposed	Actual		% of Goal
2021 LOBS 1	In Progress	\$ 1,477,000	\$ 957,205	\$ -	\$ 519,795	\$ 180,000	\$ 332,940	185%	216	583	270%	0.50	4.41	881%	6
2023 LOBS 2	In Progress	\$ 3,648,000	\$ 1,033,266	\$ 2,270,000	\$ 344,734	\$ 408,600	\$ 190,000	47%	451	776	172%	0.50	9.98	1995%	3
2024 LOBS 3	In Progress	\$ 4,540,000	\$ 55,526	\$ 443,000	\$ 4,041,474	\$ 470,000	\$ -	0%	624	60	10%	1.00	1.03	103%	1
2025 LOBS 4	Proposed	\$ 10,161,000	\$ -	\$ -	\$ 10,161,000	\$ 1,000,000	\$ -	0%	1,765	0	0%	1.00	0.00	0%	0

Program Totals		Budget				Protection									
		Total				Leverage			Acres Protected		Shoreline Protected			Projects	
						Proposed	Actual	% of Goal	Proposed	Outcome	% of Goal	Proposed	Actual		% of Goal
		Award	Spent	Committed	Remaining	Proposed	Actual	% of Goal	Proposed	Outcome	% of Goal	Proposed	Actual	% of Goal	
Complete		\$ -	\$ -	\$ -	\$ -	\$ -	\$ -		0	0		0.00	0.00		0
In Progress		\$ 9,665,000	\$ 2,045,997	\$ 2,713,000	\$ 4,906,003	\$ 1,058,600	\$ 522,940	49%	1,291	1,419	110%	2.00	15.41	771%	10
Totals Across All Grants		\$ 9,665,000	\$ 2,045,997	\$ 2,713,000	\$ 4,906,003	\$ 1,058,600	\$ 522,940	49%	1,291	1,419	110%	2.00	15.41	771%	10

Spent and Committed Funding by Grant



HA13 Shakopee Creek: Headwaters Restored, Species and Land Protected Kandiyohi County, Minnesota



Partners:

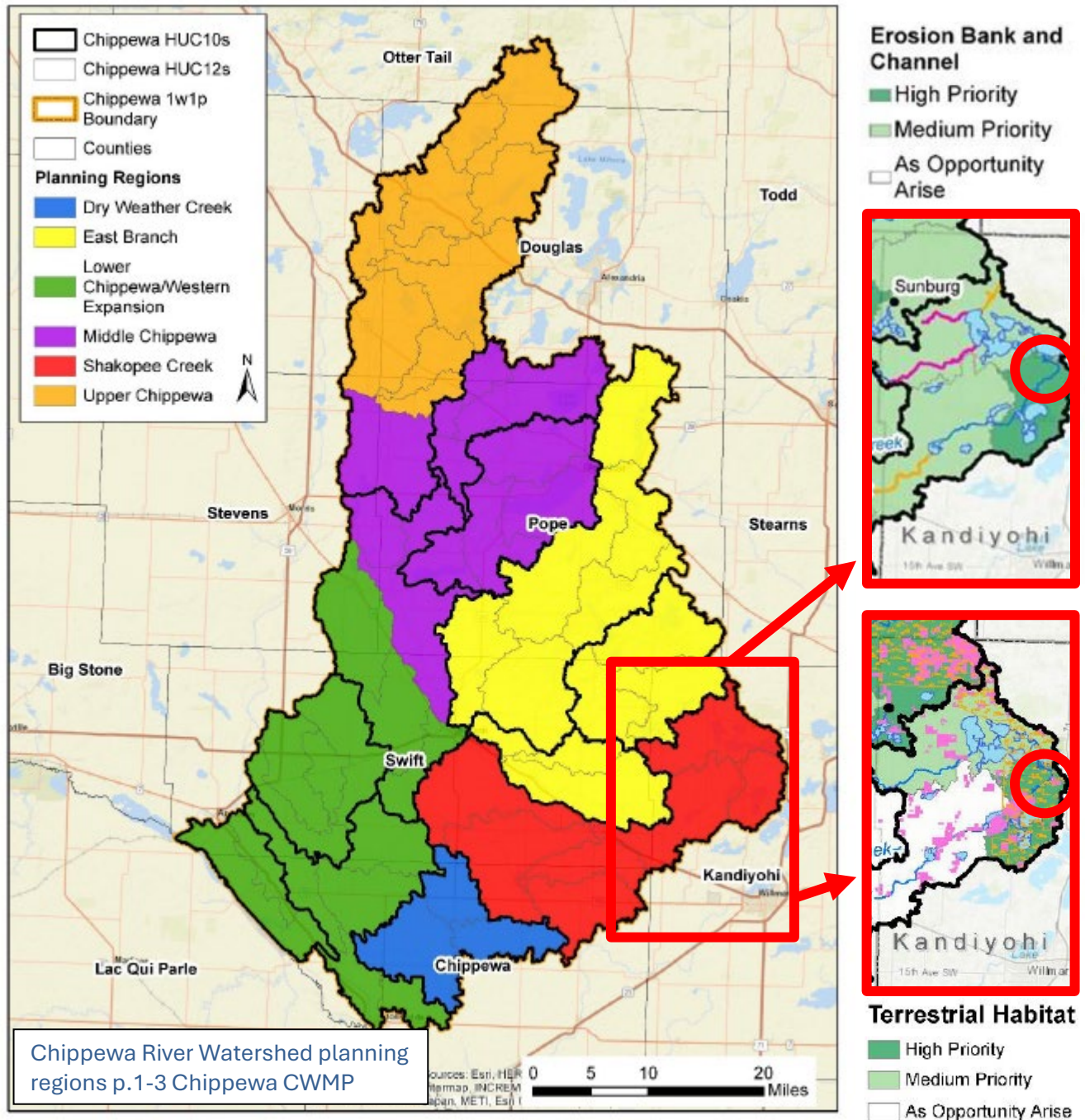
- Landowners
- Lake Andrew Township



BWSR



Chippewa Comprehensive Watershed Management Plan Identifying and Prioritizing Issues + Targeted Implementation



Terrestrial Habitat: Need for protection and improvement of existing terrestrial habitat (including **forested areas, prairie, and areas of perennial ground cover**) and habitat connectivity to promote wildlife and species richness. Loss of **stream connectivity and aquatic habitat, and aging infrastructure** impacting aquatic communities. p.3-2 Chippewa CWMP

Hydrology: The combination of **expanding drainage, lack of upland water storage, changes to land use patterns, and increased precipitation** have resulted in increased discharge and frequency across the entire range of flows in the Chippewa River Watershed. These effects have impacts on water quality, aquatic life, and downstream flooding. p.3-2 Chippewa CWMP

Erosion Bank and Channel (Sediment): **Erosion and sloughing of streams and ditches** increases sediment and nutrient loading to surface water impacting aquatic communities and overall channel structure. p.3-2 Chippewa CWMP